

Azure Biosystems™ c280

Powerful chemiluminescent imaging with a touch



Smart Imaging Technology

No Focusing

Regardless of the size of your gel, all images are in focus without adjusting the focus manually.

No Positioning

Perfect images no matter where you place the sample in the imager.

Automatic Imaging

Select the application, and the instrument will choose the light sources and filters for you.



Tools for...

- ✓ Automatic Lane and Band Detection
- ✓ Molecular Weight Analysis
- ✓ Quantity Calibration
- ✓ Annotation
- ✓ Multiplex Analysis

Application Flexibility



Chemiluminescence

Picogram Detection of Proteins with Chemiluminescent Westerns

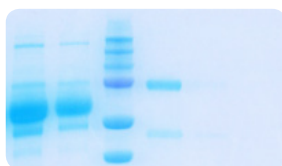
The Azure cSeries provides accurate and fast chemiluminescent detection, as well as the sensitivity, dynamic range, and linearity needed for quantitative blot analysis. Get the best picture every time, and stop wasting money on a darkroom.



Blue Light Imaging
SYBR® Safe, SYBR® Gold,
SYBR® Green

“Safe” Dye Detection

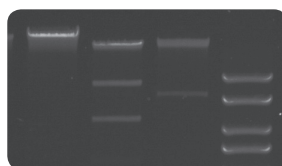
An alternative to ethidium bromide, less-harmful ‘Safe’ dyes can be imaged with the EPI Blue LEDs standard in the system.



White Light Imaging
Coomassie Blue, Silver Stain

Protein Analysis

Protein gels stained with Coomassie blue or silver stain can easily be imaged using the visible light application.



UV Imaging
Ethidium Bromide

Fluorescent Detection for UV

With a dual wavelength 302nm and 365nm UV transilluminator, images of ethidium bromide-stained DNA gels or Stain-free gels can be captured. An interlock switch prevents the accidental exposure of UV.

AzureSpot Analysis

With the c280, AzureSpot software provides tools for the analysis of gels and blots, AzureSpot makes complex analysis a simple process. Designed to be either fully automated or manually configured, AzureSpot provides flexibility and accuracy for your data analysis.

AzureSpot includes: Automatic PDF report generator, Lane creation, Background subtraction, Band detection, Molecular size/pI calibration, Quantity calibration toolbox, Module for easy shape selection/deselection, Wide range of data fields to display in measurements, Annotation tools for comments and highlighting of image.

Remarkable Design

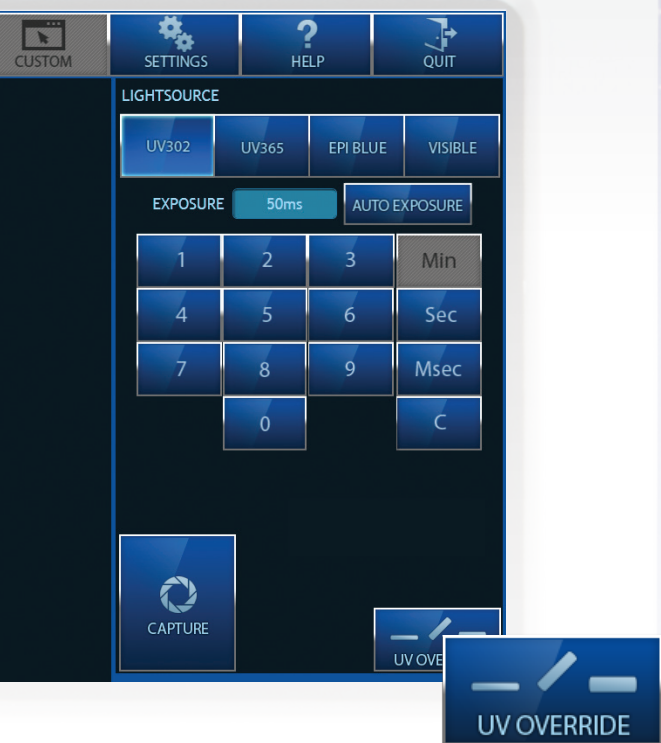


Simple Imaging Workflow

1. Select Light Source
2. Set Exposure Time or Autoexpose
3. Capture

Band Excision Mode

Easily excise your DNA bands from an agarose gel with our Band Excision mode. Designed to allow the user to cut bands out of their gel with the system door open, it also turns off the UV light after 5 minutes, ensuring the light is not accidentally left on.



Specifications

Catalog Number	AC2801
Automation Capabilities	
Workflow Imaging	Yes. Select application and imaging parameters are automatically adjusted.
Autofocus	Yes
Auto Exposure	Yes
Flat Fielding	Yes
Applications	
Blotting	Chemiluminescence, Chemifluorescence, X-ray films
Protein Gel Electrophoresis	Silver stain, Coomassie blue, etc.
Nucleic Acid Electrophoresis	EtBr, etc.
Fluorescence Detection	Cy2, GFP, FITC, etc.
Chemi Acquisition Modes	Cumulative for real time development, multiple for sequential acquisition

Hardware Specifications

Camera	6.1 MP 16-bit CCD camera
Cooling	-50°C
Marker Imaging	Yes
Filter Wheel	Orange filter included (e.g. EtBr)
EPI White Light	Yes
EPI Blue Light	Yes
Field of View	20 x 15 cm
Computer	11.5" touch screen computer
Dynamic Range	>4 orders of magnitude
Data Output	16 bit .tif or .jpg
Footprint	15 x 12 in (38 x 30 cm)
Analysis Software	1 license included



www.azurebiosystems.com • info@azurebiosystems.com

Copyright © 2016-2017 Azure Biosystems. All rights reserved. The Azure Biosystems logo and Azure Biosystems™ are trademarks of the Company. SYBR® is a registered trademark of Life Technologies. All other trademarks, service marks and trade names appearing in this brochure are the property of their respective owners.