

## Selection of SimpleStep™ ELISA kits

Target	Species	Product code
α 1 antichymotrypsin	Human	ab171574
Apolipoprotein J	Human	ab174447
Catalase	Human	ab171572
ERK1	Human	ab173195
Fibrinogen	Human	ab171578
G6Pi	Human	ab171575
GFP	Human	ab171581
GM-CSF	Human	ab174448
Hemopexin	Human	ab171576
Hif1α	Human	ab171577
ICAM-1	Human	ab174445
IFN-γ	Human	ab174443
IFN-γ R1	Human	ab173193
IL-1ra	Human	ab174450
IL-2	Human	ab174444
IL-4	Human	ab174449
IL-8	Human	ab174442
IP-10	Human	ab173194
Myoglobin	Human	ab171580
p21	Human	ab171579
p53	Human	ab171571
PARP (cleaved)	Human	ab174441
RANTES	Human	ab174446
Sirt1	Human	ab171573
ZAP70	Human	ab173192

Browse many more targets of the continually growing catalogue on our website. New extensively validated SimpleStep™ ELISA kits released every month.

000\_13\_ABC

## SimpleStep™ ELISA kits – make your life easier



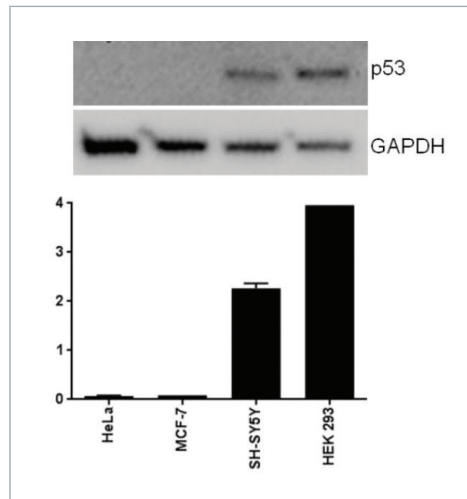
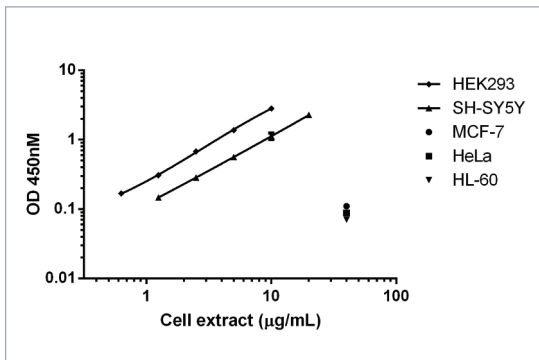
Single wash sandwich ELISA kits providing improved performance.

# Mix → Wash → Read. It's that easy.

The SimpleStep™ ELISA kit employs a labeled capture and detection antibody which immunocapture the sample analyte in solution. This entire complex (capture antibody/protein/detection antibody) is in turn immobilized in the well via immunoaffinity of an anti-tag antibody coated in the microplate wells.

- **Simplicity** - The single wash step greatly simplifies and shortens the overall assay method
- **Ease** - Platform requires no specific training or new instrumentation (colorimetric detection method)
- **Accuracy** - Reduced sample handling steps yield greater reproducibility compared to techniques requiring multiple wash and incubation steps
- **Binding kinetic advantages** - In addition to time saving, antibodies interacting with sample analyte in solution provide a more efficient binding process driving better sensitivity and specificity than with immobilized immunocapture
- **Highly validated** -

**p53 Human SimpleStep™ ELISA Kit (ab171571)**  
 Comparison of p53 expression in different cell lines with ab171571: sensitivity = 65 pg/mL, intra/inter- assay precision = 4.3%/6.7%.



# SimpleStep™ ELISA Kit Protocol

