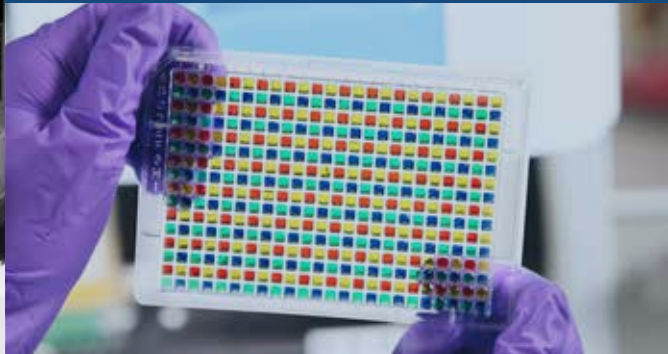




**Thermo Scientific**  
Versette



User-friendly liquid handling  
**in a compact format**

**Thermo**  
SCIENTIFIC

Thermo Scientific™ Versette™ is a user-friendly liquid handler in a compact format. It is easy to get started with a liquid handling solution that offers a choice of 96- or 384-channel pipetting heads.

### Interchangeable pipetting heads

The Versette automated liquid handler is compatible with 96- and 384-channel pipetting heads with a total volume range of 0.5 to 300 µl. All pipetting heads can be easily changed by the user without using any tools, while the process is safely guided step-by-step by Thermo Scientific™ ControlMate™ Software. All pipetting heads utilize RFID tags for self-identity.

### Compact size

The six-position stage of Versette uses an innovative dual-level structure to minimize space requirements in the laboratory, thus allowing the instrument to be placed on a standard laboratory bench. Despite the compact size of the instrument the user can still choose between six different plate positions for a variety of 96- and 384-well plates, as well as racked storage tubes.

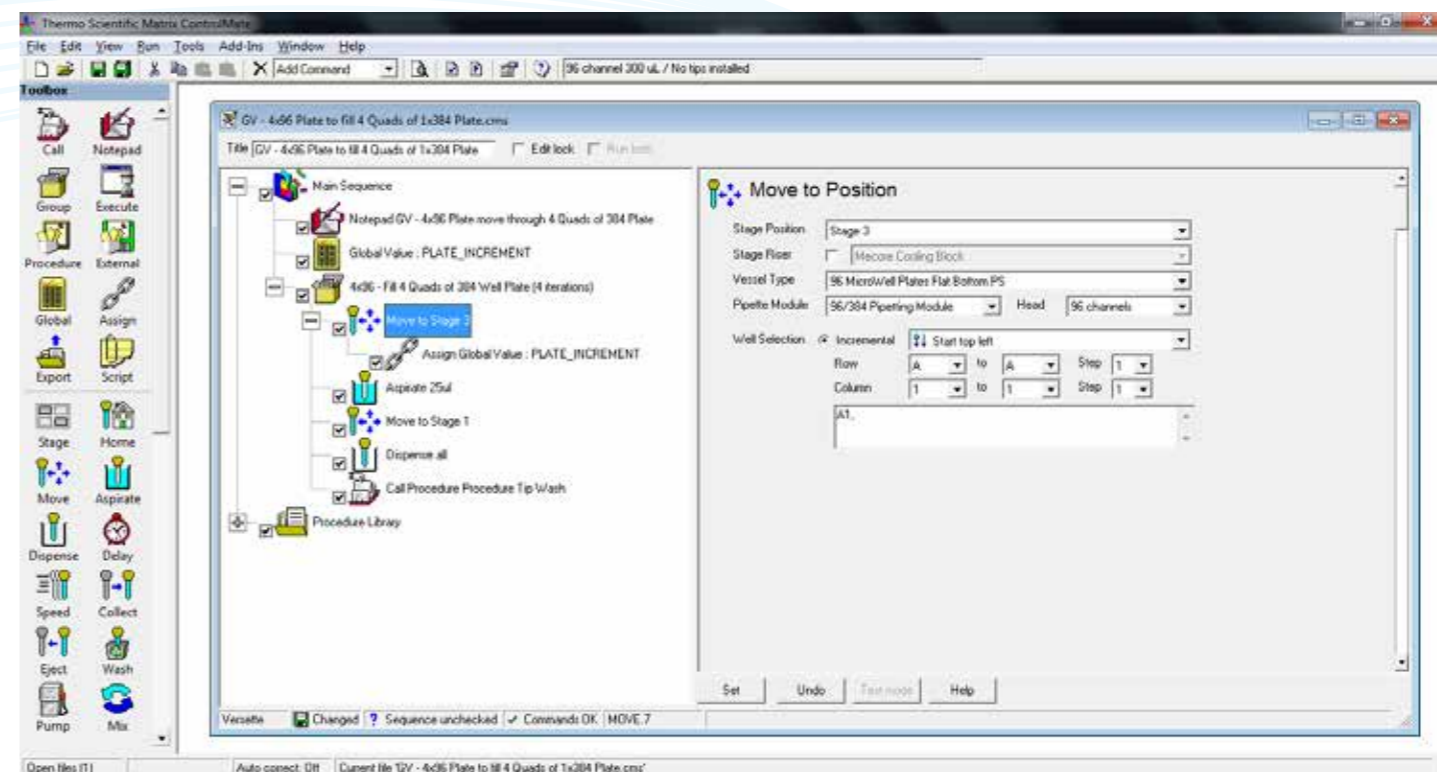
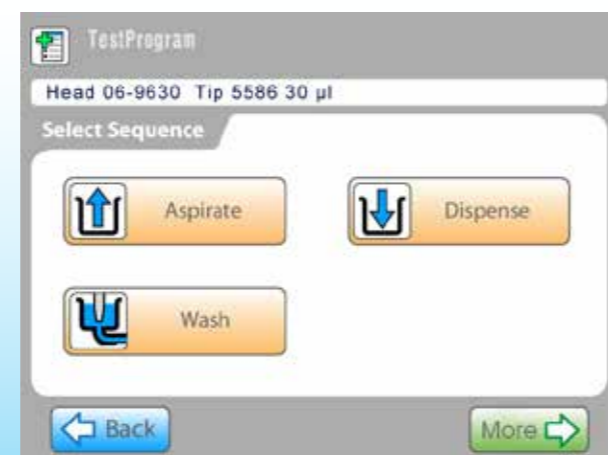


### Optimized consumables

The 96- and 384-channel pipetting heads utilize disposable Thermo Scientific™ DARTs™ tips (Disposable Automation Research Tips), which feature a unique surface seal design to ensure an even seal across all pipetting channels. Combined with DARTs tips, Versette liquid handler guarantees accurate and precise pipetting results in all applications across the entire pipetting range. The wide selection of DARTs tips allows the user to select the optimal tip for each application regardless of whether it requires the extended, wide bore or sterile version.

### User-friendly programming options

The user can start programming the Versette using the visual icon-based on-board touchscreen, thus making operation simple and easy. This allows quick startup and is best suited for simple protocols. When more complex protocols and advanced editing is required, the Versette ControlMate PC software is available. This software provides a straightforward approach to creating and running pipetting programs. It includes a wide labware library and precise controlling options for various liquid handling applications.



### Wide range of applications

The Versette is designed to perform a variety of liquid handling tasks for a wide range of applications including plate stamping, plate reformatting, serial dilution and many other applications in low- to high-throughput laboratories.

The instrument is also optimized for high-throughput immunoaffinity sample preparation with Mass Spectrometric Immunoassay (MSIA) pipette tips as part of the integrated MSIA workflow. The MSIA tips are compatible with the Versette where sample binding, wash and elution steps are automated to facilitate the cycling of samples and the appropriate buffers through the microcolumn embedded in the pipette tip. The complete walk-away immunoaffinity system provides increased sample throughput while providing high assay reproducibility.



### Applications

- Plate filling
- Plate replication
- Plate reformatting
- Serial dilutions – rows or columns
- Sample preparation with Thermo Scientific™ Mass Spectrometric Immunoassay pipette tips (MSIA™)

## Technical specifications

Volume range	0.5–300 µl (depending on the pipetting head )	
Pipetting resolution	Increments of 0.1 µl	
Compatible labware	96- and 384-well plates, racked storage tubes	
Pipetting accuracy	96-channel 0.5–30 µl	± 2.0% or 0.15 µl
	96-channel 5–300 µl	± 2.0% or 1.00 µl
	384-channel 1.0–100 µl	± 2.0% or 0.50 µl
Pipetting precision	96-channel 0.5–30 µl	± 1.5% or 0.10 µl
	96-channel 5–300 µl	± 1.5% or 0.75 µl
	384-channel 1.0–100 µl	± 1.5% or 0.25 µl
Dimensions (H x W x D)	680 x 680 x 559 mm (27 x 27 x 22 in.)	
Weight	69 kg (152 lbs.) (no pipetting head included)	
Operating system	Windows XP SP3, Windows 7 (32- and 64-bit)	
Interface	RS232	
Power requirements	100–240 V, 50/60 Hz	

## Consumables

Pipetting head	Compatible DARTs Tip	Description
96-channel 0.5–30 µl	5586 (non-sterile) / 5587 (sterile) / 5588 (sterile filtered)	30 µl
	5506-11 (non-sterile) / 5507 (sterile) / 5508 (sterile filtered)	30 µl extended length
96-channel 5–300 µl	5516-11 (non-sterile) / 5517-11 (sterile) / 5518-11 (sterile filtered)	300 µl
	5536 (non-sterile) / 5537 (sterile) / 5538 (sterile filtered)	300 µl extended length
	5546 (non-sterile) / 5547 (sterile) / 5548 (sterile filtered)	300 µl extended length, wide bore
384-channel 1.0–100 µl	5326 (non-sterile) / 5327 (sterile) / 5328 (sterile filtered)	100 µl

## Ordering information

Cat. No.	Description
<b>Versette</b>	
650-01-BS	Versette base unit
650-02-NTC	96- and 384-channel pipetting module for use with 96- and 384-channel pipetting heads.
650-03-SPS	6-position stage
<b>Versette pipetting heads</b>	
650-06-9630	96-channel air displacement pipetting head. Volume 0.5-30 µl
650-06-96300	96-channel air displacement pipetting head. Volume 5-300 µl
650-06-384100	384-channel air displacement pipetting head. Volume 1–100 µl
<b>Versette accessories</b>	
650-04-PUMP	Pump module
650-05-96TTW	96-channel tip wash station, tall
650-05-384TTW	384-channel tip wash station, tall
650-08-9630SD	Serial dilute magazine 96/30 µl (8/12)
650-08-9630XL	Serial dilute magazine 96/30 µl (8/12)
650-08-96300SD	Serial dilute magazine 96/300 µl (8/12)
650-08-384SD	Serial dilute magazine 384/30&100 µl (16/24)

For more information please visit:  
[www.thermoscientific.com/versette](http://www.thermoscientific.com/versette)  
[www.thermoscientific.com/controlmate](http://www.thermoscientific.com/controlmate)

© 2013 Thermo Fisher Scientific Inc. All rights reserved. All other trademarks are the property of Thermo Fisher Scientific Inc. and its subsidiaries. Specifications, terms and pricing are subject to change. Not all products are available in all countries. Please consult your local sales representative for details.

**USA/Canada** +1 603 595 0505  
**USA toll free** 800 345 0206  
**Austria** +43 1 801 40 0  
**Belgium** +32 53 73 42 41  
**Finland** +358 9 3291 0200  
**France** +33 2 2803 2000  
**Germany national toll free** 08001-536 376  
**Germany international** +49 6184 90 6940

**Italy** +39 02 95059 552  
**Netherlands** +31 76 571 4440  
**Nordic/Baltic countries** +358 9 329 100  
**Russia/CIS** +7 (495) 739 76 41  
**Spain/Portugal** +34 93 223 09 18  
**Switzerland** +41 44 454 12 12  
**UK/Ireland** +44 870 609 9203  
**Australia** +613 9757 4474

**China** +86 21 6865 4588 or +86 10 8419 3588  
**China toll free** 800-810-5118, 400-650-5118  
**India** +91 22 6716 2200  
**Japan** +81-3-5826-1616  
**Korea** +82 11 796 7771  
**Other Asian countries** +65 6872 9717  
**Countries not listed:** +49 6184 90 6940 or +33 2 2803 2000

**Thermo**  
 SCIENTIFIC  
 Part of Thermo Fisher Scientific