

LEADING PARTNER FOR PEPTIDES

BANKPEPTIDE
BIOLOGICAL

合肥国肽生物科技有限公司 BANKPEPTIDE(HEFEI) .,LTD

Add: Floor 4,C6 Science and Technology Industrial Park, No. 168 Xiangzhang Road,

Hefei hi-tech Dist, Anhui province, China

Tel:+86 551-62626599

Support:+86 551-62626599-807

Service:+86 551-62626599-809

Fax:86-0551-62869631

Email:sales@bankpeptide.com Or info@bankpeptide.com

Code:230031

 www.bankpeptide.com

 国肽生物
BANKPEPTIDE BIOLOGICAL

全球多肽 · 领先品牌

leading partner for
peptides



COMPANY

01

- ◎ INTRODUCTION
- ◎ COMPANY MISSION
- ◎ OUR RESPONSIBILITY
- ◎ MANAGEMENT

TECHNOLOGY

05

- ◎ DISULFIDE BRIDGE COMMONLY
- ◎ INSOLUBLE PEPTIDE PURIFICATION
- ◎ LONG PEPTIDES SYNTHESIS TECHNOLOGY
- ◎ STABLE ISOTOPE LABELING TECHNOLOGY
- ◎ STAPLED PEPTIDE TECHNOLOGY
- ◎ FMK CMK MODIFICATION TECHNOLOGY
- ◎ INSULIN SYNTHESIS TECHNOLOGY

PRODUCT

11

- ◎ CUSTOM PEPTIDE SYNTHESIS
- ◎ CUSTOM MODIFICATION
- ◎ cGMP PEPTIDE
- ◎ COSMETICS PEPTIDE
- ◎ PEPTIDE LIBRARY SERVICES
- ◎ CATALOGE PEPTIDE

HONOUR

19

- ◎ TECHNICAL QUALIFICATION
- ◎ ENTERPRISE HONOR
- ◎ PARTNER

CATALOG

INTRODUCTION

BANKPEPTIDE
BIOLOGICAL

word-leading
provider of custom peptide
synthesis service

BANKPEPTIDE IS A WORD-LEADING PROVIDER OF CUSTOM PEPTIDE SYNTHESIS SERVICE. WE HAVE BEEN SERVING BIOTECH AND PHARMACEUTICAL INDUSTRY, AS WELL AS SCIENTISTS AND RESEARCHERS AROUND THE WORLD BY PROVIDING HIGH QUALITY PEPTIDES, TECHNICAL SUPPORT AND RELATED SERVICES FOR SEVERAL YEARS.

WITH A FOCUS ON NANOMETER, MATERIAL, CELL, CHEMISTRY, ANTIBODY AND DRUG FIELDS, BANKPEPTIDE HAS A PROVEN TRACK RECORD OF INNOVATIVE, HIGH PROFILE RESEARCH, WHICH HAS GENERATED IN TOP-TIER JOURNALS.

BANKPEPTIDE MADE GREAT CONTRIBUTION TO CHINESE PEPTIDE INDUSTRY DEVELOPMENT. OUR GOAL IS TO PROMOTE THE FOREFRONT PEPTIDE TECHNOLOGY AND THE LATEST RESEARCH RESULTS ALL OVER THE WORLD, AS WELL AS PROVIDING SERVICES AND SOLUTIONS TO GLOBAL RESEARCHERS AND PHARMACEUTICAL INDUSTRY PRACTITIONERS.



COMPANY MISSION

BANKPEPTIDE BIOLOGICAL

SPIRITUAL COMMUNICATION IN THE WORLD

RESPONSIBILITY MARKED BY QUALITY

OUR MISSION WILL CONTINUE TO CREATE REAL VALUE.....

BANKPEPTIDE MAKES A CONTRIBUTION TO DRUG RESEARCH AND DEVELOPMENT, SCIENTIFIC DEVELOPMENT.WE SHOULD ALWAYS BEAR IN MIND THAT BANKPEPTIDE FOUNDED FOR HUMAN HEALTH. AS A TECHNOLOGY RESEARCHER, EVERYTHING WILL FOLLOW AS LONG AS WE STICK TO THE BELIEF. WHAT WE HAVE TO DO IS STICKING TO OUR OWN JOB TO MAKE THE BEST TECHNICAL ACHIEVEMENT TO BENEFIT TO HUMAN!



OUR RESPONSIBILITY

BANKPEPTIDE BIOLOGICAL

ROBUST INNOVATION

ETERNAL QUALITY

WE HAVE THE COURAGE TO TAKE RESPONSIBILITY, SO AS TO ASSUME GREATER RESPONSIBILITY.....

WE PROVIDE HIGH QUALITY PRODUCTS AND SERVICES TO CUSTOMERS AS WE ALWAYS DO, MEANWHILE LET CUSTOMERS INTO OUR SATISFIED EMPLOYERS BEARING HIGHER VALUE FOR OUR SHAREHOLDERS TOGETHER. SYNCHRONIZING WITH THE WORLD, PROTECTING OUR ENVIRONMENT, INSISTING ON SUSTAINABLE DEVELOPMENT, INNVESTING FOR THE COMMUNITY BENEFIT AND DEVELOPING SOCIAL CHARITY.

MANAGEMENT

BANKPEPTIDE BIOLOGICAL

BENEFITING BY MUTUAL DISCUSSION

MAKING CONCERTED EFFORTS

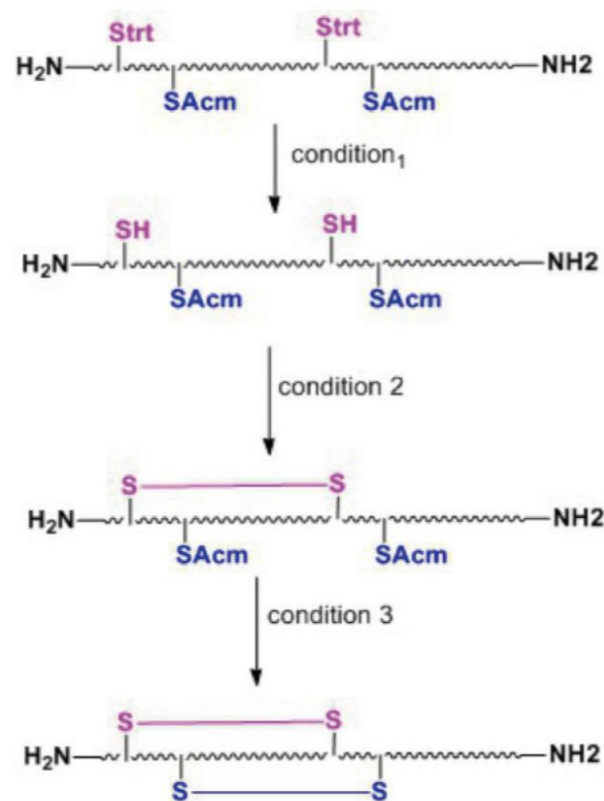
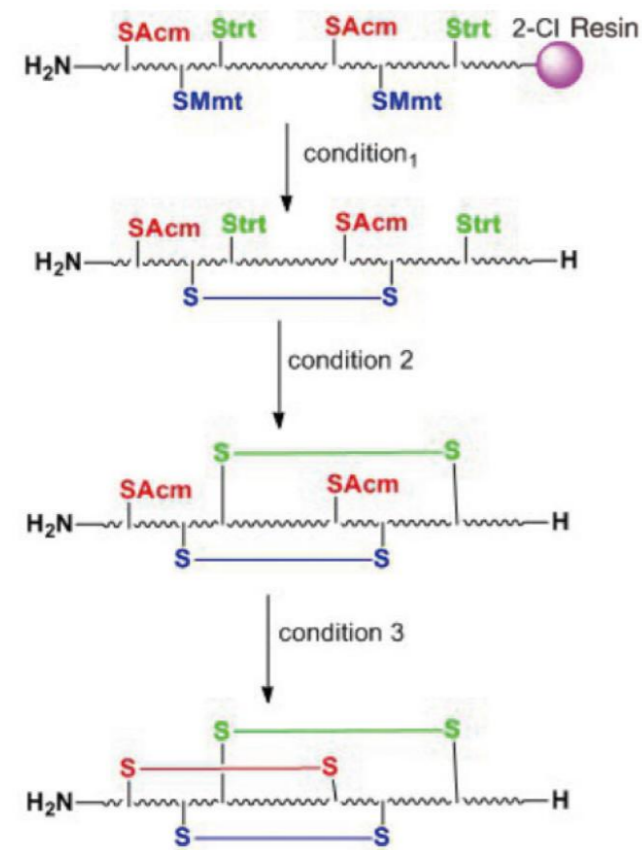
PROFESSION+EXPERIENCE+INNOVATION+RESPONSIBILITY+FRANK +EFFECT.....

BANKPEPTIDE HAS A TOP TEAM WITH HIGH QUALITY IN THE INDUSTRY. BANKPEPTIDE HAS WELL-KNOWN ENTERPRISES SENIOR MANAGEMENT PERSONNEL WHO COME FROM DOMESTIC AND INTERNATIONAL FIRST-CLASS BIOTECHNOLOGY COMPANIES, BUILDING A TOP TEAM WITH INDUSTRY EXPERTS, TECHNICAL EXPERTS AND R & D TEAM OF EXPERTS BY THE ELITE IN VARIOUS FIELDS WHO OWNING FIRST-CLASS PRACTICAL EXPERIENCE IN TECHNOLOGY RESEARCH AND DEVELOPMENT, PRODUCT DEVELOPMENT AND QUALITY MANAGEMENT.

DISULFIDE BRIDGE COMMONLY

BANKPEPTIDE BIOLOGICAL

TRT, ACM, MMT, TBU, BZL, MOB, TMOB ETC ,A VARIETY OF GROUPS, ARE USED AS THIOL PROTECTING GROUP.PLEASE SEE BELOW MULTI-DISULFIDE BOND FORMING ROUTES IN PEPTIDES SYNTHESIS USING 2-CL AND RINK RESINS AS THE CARRIER :



THE FORMATION OF DISULFIDE BONDS IS ALWAYS ONE OF THE DIFFICULTIES IN PEPTIDE SYNTHESIS. AFTER UNREMITTING RESEARCH AND ACCUMULATION, BANKPEPTIDE HAS QUITE MATURE TECHNOLOGY OF THIS MODIFICATION. AT PRESENT, WE HAVE BEEN ABLE TO PROVIDE HIGH QUALIFIED PEPTIDES

WITH THREE AND FOUR DISULFIDE MODIFICATION IN LARGE QUANTITIES AND HIGH PURITY TO CUSTOMERS.OVERCOMING THE DIFFICULTIES, CONTINUOUSLY IMPROVING THE QUALITY OF PRODUCTS AND MAKING UNREMITTING EFFORTS TO MEET CUSTOMER REQUIREMENTS ARE OUR CONSTANT AIM.

INSOLUBLE PEPTIDE PURIFICATION

BANKPEPTIDE BIOLOGICAL

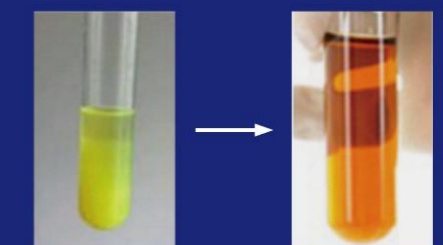
ACCORDING TO CUSTOMERS' REQUIREMENTS, WE USUALLY GIVE THE FOLLOWING RECOMMENDATIONS TO INCREASE THE SOLUBILITY OF THE INSOLUBLE PEPTIDE:

1. C TERM AND THE N TERM MODIFICATION: FOR ACIDIC PEPTIDES,

3. REPLACING HYDROPHOBIC AMINO ACID RESIDUES OF SEQUENCES: INCREASING SOLUBILITY EFFECT BY SUBSTITUTING SOLUBLE AMINO ACID FOR HYDROPHOBIC AMINO ACID IN SEQUENCE. WE USUALLY USE GLY, ALA TO REPLACE THE HYDROPHOBIC AMINO ACIDS, WHICH USUALLY GETS GOOD DISSOLVING EFFECT.

N TERMINAL AMIDATION MODIFICATION, FOR ALKALINE PEPTIDES, C TERMINAL ACETYLATION.

2. REVISION SEQUENCE OF THE PEPTIDE CHAIN.: SOME SEQUENCE HAS A LARGE NUMBER OF CONTINUOUS HYDROPHOBIC AMINO ACIDS, SUCH AS W, F, V, I, L, M, Y, THESE HYDROPHOBIC AMINO ACID SEQUENCE AT LARGE OR CONTINUOUS REPETITION AND WHOLE PEPTIDE USUALLY IS INSOLUBLE.,IN ORDER TO ENHANCE THE POLARITY AND HYDROPHILICITY OF PEPTIDE, WE ALSO WILL ADVISE CLIENTS TO EXTEND SEQUENCE OR REDUCE THE NUMBER OF HYDROPHOBIC AMINO ACIDS TO INCREASE SOLUBILITY ON THE CONDITION OF NON AFFECTING EXPERIMENTAL RESULTS.



SCHEMATIC DIAGRAM OF POLYPEPTIDE DISSOLUTION PROCESS

BANKPEPTIDE BIOLOGICAL

INSOLUBLE PEPTIDE PURIFICATION

LONG PEPTIDES SYNTHESIS TECHNOLOGY

BANKPEPTIDE BIOLOGICAL

STABLE ISOTOPE LABELING TECHNOLOGY

BANKPEPTIDE BIOLOGICAL

CURRENTLY OUR COMPANY SYNTHETIC ISOTOPE LABELED PEPTIDES MAINLY ARE THE C13, N15, THESE TWO ISOTOPICALLY LABELED PEPTIDES, WHICH THROUGH DIRECTLY INTRODUCING ISOTOPICALLY LABELED AMINO ACIDS TO ACHIEVE THE PURPOSE OF EFFECTIVELY LABELED THE ENTIRE PEPTIDE. THERE ARE TYR, THR, LYS, ARG AND GLU THESE COMMON ISOTOPE LABELED AMINO ACIDS .

QUANTITATIVE ANALYSIS OF PROTEIN EXPRESSION LEVELS IS KEY CONTENT OF PROTEOMIC STUDY. IT DEPENDS ON ACCURATE HIGH-THROUGHPUT AND REPETITIVE TECHNOLOGY. APPLICATION OF STABLE ISOTOPE LABELING TECHNIQUE FOR QUANTITATIVE PROTEIN EXPRESSION LEVEL IS ONE OF THE MOST ACCURATE METHODS AND HAS MORE ADVANTAGES COMBINED WITH GAS CHROMATOGRAPHY / MASS SPECTROMETRY TECHNOLOGY.

BANKPEPTIDE CAN PROVIDE VARIOUS QUANTITY RANGES FROM UG ,MG TO KG !

BANKPEPTIDE HAD DEVELOPED SEVERAL SCHEMES BELOW WHICH EFFECTIVELY IMPROVE MANY PROBLEMS IN THE PROCESS OF LONG PEPTIDES SYNTHESIS.

1. MICROWAVE SYNTHESIS
2. FRAGMENT SYNTHESIS
3. HYDRAZINE SYNTHESIS

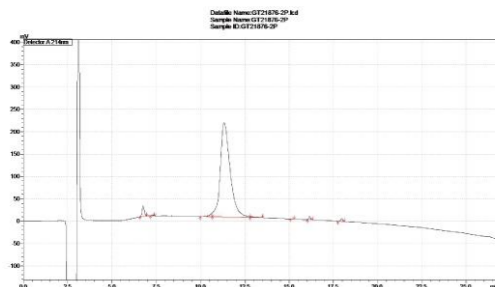
THESE THREE METHODS PERFECTLY SOLVE THE DIFFICULTIES TO PURIFY, IMPURITIES AND LOW PURITY IN THE SYNTHETIC PROCESS OF LONG PEPTIDES. ESPECIALLY FOR THE PEPTIDES

CONTAINING DIFFICULT SEQUENCES AND HPLC ABNORMAL PEAK ,THERE ARE EVIDENT EFFECTS. BANKPEPTIDE HAS MASTERED THE MATURE LONG PEPTIDE SYNTHESIS TECHNOLOGY.

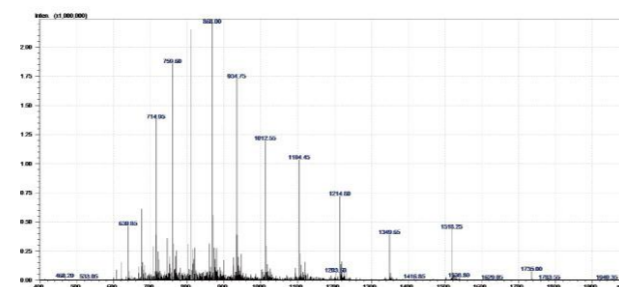
SUCCESSFUL CASE:

THE SEQUENCE WE DONE:
GHMDIKKEIEAIKKEQEAIKKKIEAIEKELRQLANETTQDLQLFLRDTTELRTFSILNRKDIDFLLQR
MKQIEDKIEEIESKQKKIENEIARIKKLIGERY

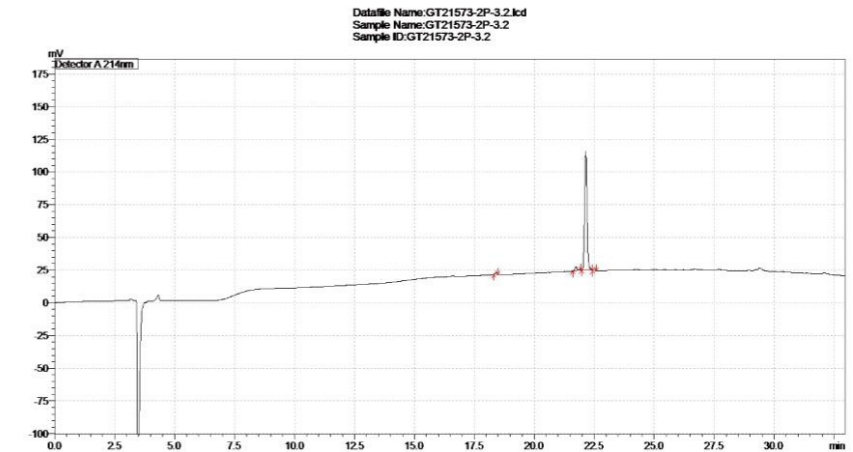
HPLC ANALYSE:



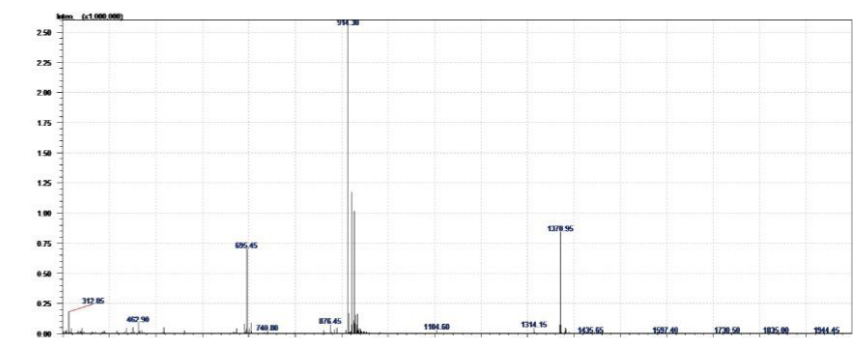
MS ANALYSE:



HPLC ANALYSE:



MS ANALYSE:

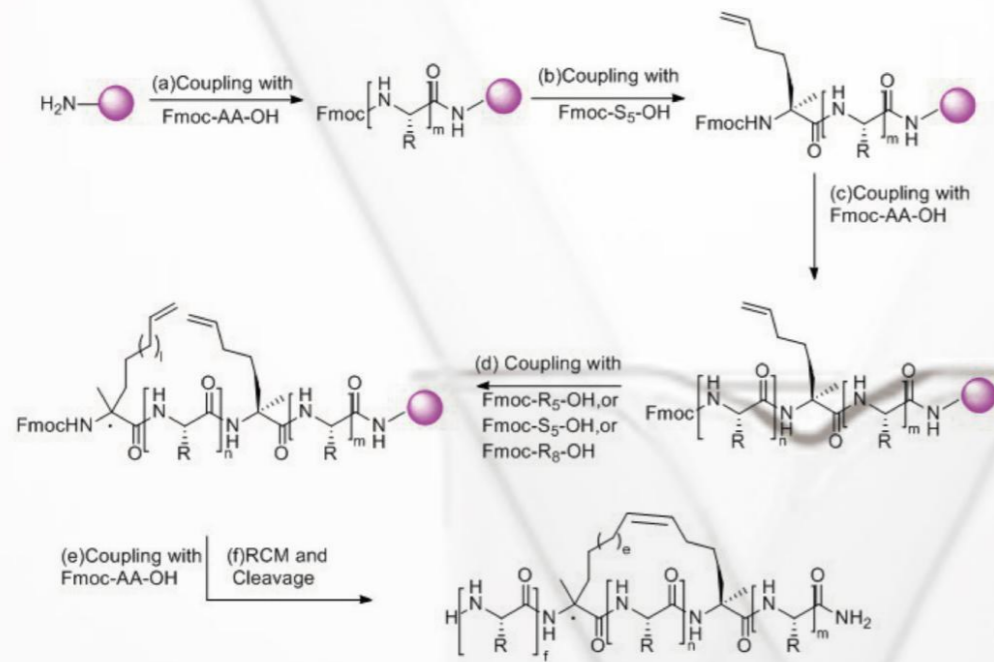


STAPLED PEPTIDE TECHNOLOGY

BANKPEPTIDE BIOLOGICAL

THE SYNTHESIS DIFFERENCE BETWEEN STAPLED PEPTIDE AND THE NORMAL LINEAR PEPTIDE LIES IN BEING INTRODUCED THE TWO NON NATURAL AMINO ACIDS CONTAINING A-METHYL AND A-ALKENYL IN THE PROCESS

OF SOLID PHASE SYNTHESIS. THEN THE TWO NON NATURAL AMINO ACIDS OCCUR OLEFIN METATHESIS CYCLIZATION TO FORM STABLE A-HELIX CONFORMATION OF THE CARBON TO SYNTHESIZE STAPLED PEPTIDE.



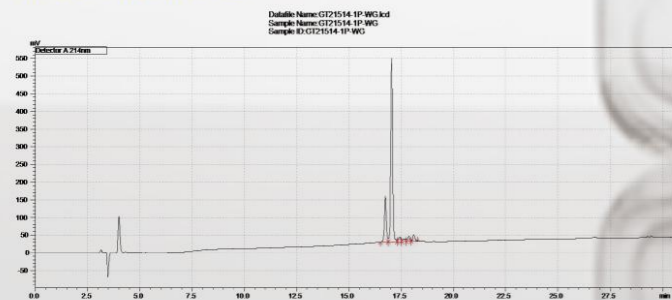
BANKPEPTIDE ALWAYS ADHERES TO THE CUSTOMER FIRST BUSINESS PHILOSOPHY. THROUGH ACCUMULATION OF LONG YEARS EXPERIMENT, CONSTANTLY OPTIMIZATION OF THE SYNTHESIS CONDITIONS AND THE PURIFICATION TECHNOLOGY, WE ALREADY

HAVE A MATURE METHOD OF STAPLED PEPTIDE SYNTHESIS TO PROVIDE HIGH-QUALITY STAPLED PEPTIDES FULLY MEETING THE NEEDS OF CUSTOMERS IN DIFFERENT KINDS OF RESEARCH AND DEVELOPMENT AREA.

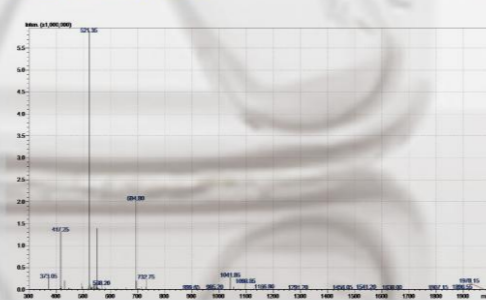
SUCCESSFUL CASE:

THE SEQUENCE WE DONE: ERLRRRIS5LCRS5HHST

HPLC ANALYSE:



MS ANALYSE:



FMK CMK MODIFICATION TECHNOLOGY

BANKPEPTIDE BIOLOGICAL

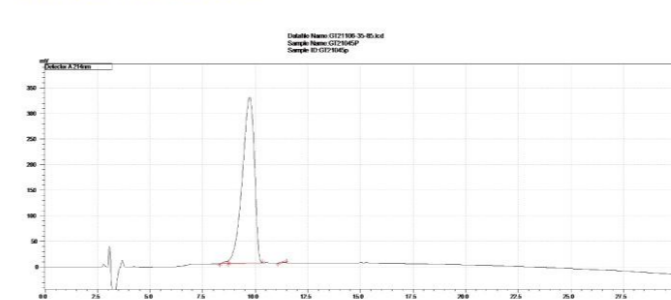
IN RECENT YEARS, PEOPLE BEGAN TO TRY TO BRING THE SEVEN MAIN GROUP F, CL AND OTHER HALOGEN ELEMENTS (FMK, MODIFIED CMK) INTO IN PEPTIDE MOLECULES. IT WAS FOUND THAT MODIFICATION OF THESE

ELEMENTS GREATLY CHANGED THE PEPTIDE MOLECULAR BIOLOGICAL CHARACTERISTICS, GREATLY PROMOTED THE DEVELOPMENT OF PROTEIN AND PEPTIDE DRUGS.

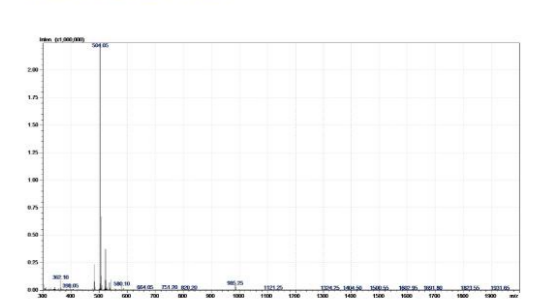
SUCCESSFUL CASE:

Z-VAE(OME)-FMK, MOLECULAR WEIGHT: 481.49, FMK MODIFIED

HPLC ANALYSE:



MS ANALYSE:



INSULIN SYNTHESIS TECHNOLOGY

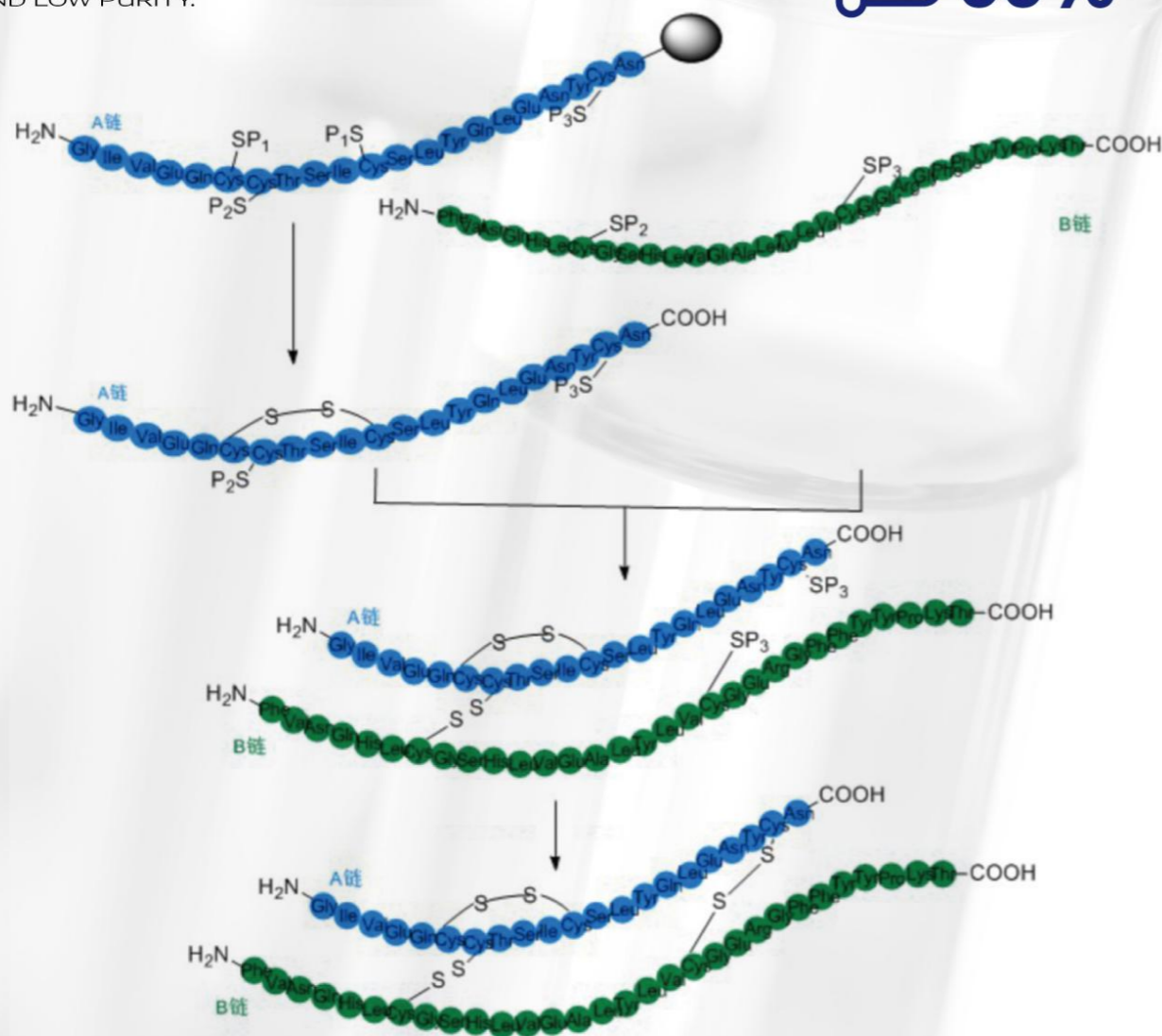
BANKPEPTIDE BIOLOGICAL

COMPARED TO ORDINARY PEPTIDES CONTAINING MULTI-DISULFIDE BONDS, THE DIFFICULTY OF INSULIN SYNTHESIS LIES IN TWO KINDS DISULFIDE BONDS BETWEEN THE INTERMOLECULAR AND INTRAMOLECULAR IN ITS STRUCTURE, WHICH MAKES INEVITABLY RESULTS APPEARED IN SPECIFICITY OF FIXED-POINT FORMATION OF SEVERAL DISULFIDE BONDS, SUCH AS MORE DIFFICULTIES, LOW YIELDING AND LOW PURITY.

SOLID PHASE SYNTHESIS OF INSULIN IS OUR REPRESENTATIVE TECHNOLOGY. THE MATURE INSULIN SYNTHESIS PROCESS WE HAVE HAS BEEN WIDELY RECOGNIZED AND AFFIRMED BY CUSTOMERS BOTH AT HOME AND ABROAD.

OUR INSULIN PRODUCTS HAVE BROKEN THROUGH THE PREVIOUS DEFECTS: LOW YIELDING AND PURITY. NOW WITH MASS PRODUCTION AND THE HIGH PURITY UP TO 99%, BANKPEPTIDE IS WORTHY OF THE TRUST OF CUSTOMERS AS INSULIN SUPPLIED BRAND.

HIGH PURITY UP TO **99%**



CUSTOM PEPTIDE SYNTHESIS

BANKPEPTIDE BIOLOGICAL

AS THE MAIN BUSINESS OF THE BANKPEPTIDE SECTION, CUSTOM PEPTIDE SERVICE HAS BEEN THE FOCUS OF DEVELOPMENT COMPANY. WITH OUR "HIGH QUALITY PRODUCTS, RICH EXPERIENCE, ADVANCED TECHNOLOGY AND THE LATEST DELIVERY DATE", HAS MORE THAN 1000 LOYAL CUSTOMERS IN THE WORLD, WIDELY DISTRIBUTED IN THE BIO PHARMACEUTICAL, **ANTIBODY COMPANY, UNIVERSITIES, SCIENTIFIC RESEARCH INSTITUTIONS AND SO ON**

1. PURITY: CRUDE ,70%, 75%, 80%, 85%, 90%, 95%, 98%, 99% .
2. DESALINATION AND SALT TRANSFER : ACCORDING TO CUSTOMERS' REQUIREMENTS, WE CAN DO TFA SALT TREATMENT, CAN ALSO CONVERT TO ACETATE.
3. DELIVERY TIME: WITHIN 30 AMINO ACIDS, ABOUT 2-3 WEEKS, URGENT ORDER, 1-2 WEEKS.
4. QUALITY CONTROL: PROVIDING MS, HPLC AND COA REPORTS DOCUMENTS OF EACH PEPTIDE WITH DELIVERY FREE.
5. AFTER-SALES SERVICE: PROBLEMS SUBMITTED IN 1-2 WEEKS, WE PROVIDE FREE-ISSUE RETEST ,AND REFUND FOR UNQUALIFIED PRODUCTS. INELIGIBLE GOODS RETESTING IN 1-3 MONTH FREE,AND STORE SAMPLES 1-2 WEEKS.

CUSTOM MODIFICATION

5-LODOACETAMIDO FLUORESCEIN	EDANS
ABU(AMINO BUTYRIC ACID)	5-FAM
ACETATE FORM (ACETATE SALT)	FARNESYL
ACETYLATION	FITC
AFC (7-AMINO-4-TRIFLUOROMETHYL COUMARIN)	GLYCOSYLATED PEPTIDES
AMC (7-AMINO-4-METHYL COUMARIN)	HCL SALT FORM
AHX (6-AMINO HEXANOIC ACID)	LUCIFERIN
AMIDATION OF C-TERMINUS (CONH ₂)	MAPS (4 BRANCH AND 8 BRANCH)
BETA CYCLIC PEPTIDES	MCA (7-METHOXYCOUMARIN-4-YL) ACETYL
BETA ALANINE	MYRISTIC ACID
BIOTIN	PALMITOYL
BODIPY F1,SE,TMR-X	PEGYLATION
BSA CONJUGATION	PHOSPHORYLATION
KLH CONJUGATION	PNA (PARA-NITROANILINE)
COUMARIN	RHODAMINE 110 AND RHODAMINE B
C-TERMINAL ESTER MODIFICATIONS	STEARIC ACID MODIFICATION
DABCYL	SER (OCTANOIC ACID)
DANSYL	5 TAMRA
DISULFIDE BRIDGES	TEXAS RED
DNP(2,4-DINITROPHENYL)	TYROSINE(SO ₃)

CGMP PEPTIDE

BANKPEPTIDE BIOLOGICAL

BANKPEPTIDE CAN PROVIDE CGMP PRODUCTS, CLINICAL RESEARCH AND PEPTIDE DRUG PRODUCTION. ALL OF THE COMPANY'S CGMP PRODUCTS ARE QUALITY CONTROL BY SENIOR EXPERTS, EACH BATCH OF PRODUCTS ARE PROVIDED WITH C.O.A REPORT.

- ☆ APPEARANCE
- ☆ SOLUBILITY
- ☆ THE PURITY OF HPLC
- ☆ MOLECULAR WEIGHT
- ☆ WATER CONTENT

PRODUCT NAME	CAS
ATOSIBAN ACETATE	90779-69-4
DESMOPRESSIN ACETATE (DDAVP)	34973-08-5
SOMATOSTATIN ACETATE	38916-34-6
TERLIPRESSIN ACETATE	14636-12-5
ELCATONIN ACETATE	60731-46-6
DESLELIN ACETATE	57773-65-6
HISTRELIN ACETATE	76712-82-8
LYSIPRESSIN ACETATE	50-57-7
NESIRITIDE ACETATE (BNP-32) BRAIN NATRIURETIC PEPT	114471-18-0
OCTREOTIDE ACETATE	83150-76-9
OXYTOCIN ACETATE	50-56-6
ORNIPRESSIN ACETATE	3397-23-7
CALCITONIN SALMON ACETATE	47931-85-1
SECRETIN ACETATE , PORCINE	17034-35-4
SERMORELIN ACETATE	86168-78-7
SINCALIDE	25126-32-3
SOMATOSTATIN ACETATE	38916-34-6
TERIPARATIDE ACETATE	52232-67-4
TERLIPRESSIN ACETATE	14636-12-5
THYMOSIN 伪1 ACETATE	62304-98-7

COSMETICS PEPTIDE

BANKPEPTIDE BIOLOGICAL

- ☆ ARGIRELINE ACETATE
SEQUENCE: AC-GLU-GLU-MET-GLN-ARG-ARG-NH₂
- ☆ PALMITOYL PENTAPEPTIDE
SEQUENCE: PAL-LYS-THR-THR-LYS-SER-OH
- ☆ PALMITOYL HEXAPEPTIDE
SEQUENCE: PAL-VAL-GLY-VAL-ALA-PRO-GLY-OH
- ☆ PALMITOYL TETRAPEPTIDE-3
SEQUENCE: PAL-GLY-GLN-PRO-ARG-OH
- ☆ PAL-GHK
SEQUENCE: PAL-GLY-HIS-LYS
- ☆ SNAP-8 (ACETYL GLUTAMYL HEPTAPEPTIDE-3)
SEQUENCE:
AC-GLU-GLU-MET-GLN-ARG-ARG-ALA-ASP-NH₂



PEPTIDE LIBRARY SERVICES

BANKPEPTIDE BIOLOGICAL



A PEPTIDE LIBRARY IS A SYSTEMATIC COMBINATION OF A LARGE NUMBER OF DIFFERENT PEPTIDES WIDELY USED FOR PROTEIN-RELATED STUDIES. PEPTIDE LIBRARIES ARE IN EVER INCREASING DEMAND DUE TO THE EXPANDING INTEREST IN PEPTIDE DRUG AND VACCINE DEVELOPMENT, IMMUNOTHERAPY, AND PROTEOMICS. TO ACCELERATE YOUR RESEARCH, BANKPEPTIDE OFFERS TWO PEPTIDE LIBRARY SERVICES:

1. **STANDARD PEPTIDE LIBRARY:** MILLIGRAM LEVEL QUANTITIES AND A WIDE RANGE OF PURITIES FOR MANY RESEARCH APPLICATIONS

2. **MICRO-SCALE PEPTIDE LIBRARY:** MICROGRAM QUANTITIES AT REDUCED PRICES, IDEAL FOR PRELIMINARY SCREENS OR PROTEOMICS APPLICATIONS



TO MAKE YOUR RESEARCH EASIER, BANKPEPTIDE ALSO OFFERS EXTENSIVE QC FOR ANY PEPTIDE LIBRARY ORDER. AS A PART OF THE ACCUPEP QC SERVICE, YOU CAN REQUEST TFA REMOVAL, SOLUBILITY TESTING, ENDOTOXIN ANALYSIS, OR OTHER SERVICES TO ENSURE THAT YOUR PEPTIDE LIBRARY WILL MEET YOUR INTENDED RESEARCH APPLICATION. IN ADDITION, OUR PROPRIETARY FLEXPEPTIDE™ TECHNOLOGY ENSURES THAT HUNDREDS OF PEPTIDES CAN BE SYNTHESIZED AT THE LOWEST COST POSSIBLE.

PEPTIDE LIBRARY SPECIFICATIONS

TO MEET DIFFERENT PURITY DEMANDS FOR MULTIPLE APPLICATIONS, BANKPEPTIDE HAS DEVELOPED TWO STANDARD PEPTIDE LIBRARY SERVICE PACKAGES: THE CRUDE PEPTIDE LIBRARY AND THE PURIFIED PEPTIDE LIBRARY.



	CRUDE PEPTIDE LIBRARY	PURIFIED PEPTIDE LIBRARY
LENGTH	5-25 AA	5-25 AA
PURITY	CRUDE	70% TO 95%
QUANTITY	1 - 20 MG	1 - 4 MG
DELIVERABLE FORMAT ²	LYOPHILIZED PEPTIDES IN 96-WELL PLATE OR INDIVIDUAL WELL-LABELLED VIALS	
QUALITY DOCUMENTS	MS ONLY OR COA, HPLC AND MS FOR EACH PEPTIDE	COA, HPLC AND MS FOR EACH PEPTIDE
MODIFICATIONS	COMPREHENSIVE: BIOTIN, FLUORESCENT DYES, PHOSPHORYLATION, METHYLATION, ACYLATION, ACETYLATION, UNNATURAL AMINO ACIDS, AND MANY MORE	

01

TURNAROUND TIME MAY BE LONGER FOR ORDERS OVER 60 PEPTIDES

02

AUTOMATED PEPTIDE POOLING AVAILABLE UPON REQUEST

CATALOGUE PEPTIDE

**BANKPEPTIDE
BIOLOGICAL**

BANKPEPTIDE CATALOGUE PEPTIDE IS COMMITTED TO CREATING THE WORLD'S MOST COMPREHENSIVE PEPTIDE SUPPLY PLATFORM! OUR PROFESSIONAL TEAM WILL KEEP TRACK OF THE LATEST HOT RESEARCH TRENDS, TO HELP YOU FIND THE ACTUAL NEEDS, AND TO PROVIDE YOU WITH THE HIGHEST QUALITY STANDARDS OF THE PRODUCTS YOU NEED. WE WILL BE THE FASTEST SPEED AND THE HIGHEST FREQUENCY OF UPDATING THE PRODUCT LIST, FOR YOU TO SAVE THE MAXIMUM RESEARCH TIME, PLEASE THE MAJORITY OF OUR CUSTOMERS AND FRIENDS ATTENTION!



PRODUCT NAME	SEQUENCE
AMYLIN (20-29) (HUMAN)	SER-ASN-ASN-PHE-GLY-ALA-ILE-LEU-SER-SER
CALCITONIN GENE RELATED PEPTIDE (8-37), HUMAN	VAL-THR-HIS-ARG-LEU-ALA-GLY-LEU-LEU-SER-ARG-SER-GLY-GLY-VAL-VAL-LYS-ASN-ASN-PHE-VAL-PRO-THR-ASN-VAL-GLY-SER-LYS-ALA-PHE-NH2
D-D-D-D-D-D	ASP-ASP-ASP-ASP-ASP-ASP
NEUROPEPTIDE Y (PORCINE)	TYR-PRO-SER-LYS-PRO-ASP-ASN-PRO-GLY-GLU-ASP-ALA-PRO-ALA-GLU-ASP-LEU-ALA-ARG-TYR-TYR-SER-ALA-LEU-ARG-HIS-TYR-ILE-ASN-LEU-ILE-THR-ARG-GLN-ARG-TYR-NH2
OVALBUMIN(257-264) ANTIGEN PEPTIDE	SER-ILE-ILE-ASN-PHE-GLU-LYS-LEU
PA (224-233), INFLUENZA	SER-SER-LEU-GLU-ASN-PHE-ARG-ALA-TYR-VAL
PANCREATIC POLYPEPTIDE, HUMAN	ALA-PRO-LEU-GLU-PRO-VAL-TYR-PRO-GLY-ASP-ASN-ALA-THR-PRO-GLU-GLN-MET-ALA-GLN-TYR-ALA-ALA-ASP-LEU-ARG-ARG-TYR-ILE-ASN-MET-LEU-THR-ARG-PRO-ARG-TYR-NH2
PAR-1-SELECTIVE PEPTIDE	THR-PHE-LEU-LEU-ARG-ASN
PEP-1	LYS-GLU-THR-TRP-TRP-GLU-THR-TRP-TRP-THR-GLU-TRP-SER-GLN-PRO-LYS-LYS-LYS-ARG-LYS-VAL
PRION PEPTIDE (106-126), HUMAN	LYS-THR-ASN-MET-LYS-HIS-MET-ALA-GLY-ALA-ALA-ALA-ALA-GLY-ALA-VAL-VAL-GLY-GLY-LEU-GLY
PROINSULIN C - PEPTIDE (55 - 89), HUMAN	ARG-ARG-GLU-ALA-GLU-ASP-LEU-GLN-VAL-GLY-GLN-VAL-GLU-LEU-GLY-GLY-GLY-PRO-GLY-ALA-GLY-SER-LEU-GLN-PRO-LEU-ALA-LEU-GLU-GLY-SER-LEU-GLN-LYS-ARG
SYNTIDE 2	PRO-LEU-ALA-ARG-THR-LEU-SER-VAL-ALA-GLY-LEU-PRO-GLY-LYS-LYS
GLUCAGON - LIKE PEPTIDE 1 (7 - 37)	HIS-ALA-GLU-GLY-THR-PHE-THR-SER-ASP-VAL-SER-SER-TYR-LEU-GLU-GLY-GLN-ALA-ALA-LYS-GLU-PHE-ILE-ALA-TRP-LEU-VAL-LYS-GLY-ARG-GLY
GP100 (457 - 466)	LEU-LEU-ASP-GLY-THR-ALA-THR-LEU-ARG-LEU
HA PEPTIDE	TYR-PRO-TYR-ASP-VAL-PRO-ASP-TYR-ALA
HBCAG (HBV) (18 - 27)	PHE-LEU-PRO-SER-ASP-PHE-PHE-PRO-SER-VAL
HIV-GP120- FRAGMENT (308-331)	ASN-ASN-THR-ARG-LYS-SER-ILE-ARG-ILE-GLN-ARG-GLY-PRO-GLY-ARG-ALA-PHE-VAL-THR-ILE-GLY-LYS-ILE-GLY
HUMAN CMV PP65 (495-503)	ASN-LEU-VAL-PRO-MET-VAL-ALA-THR-VAL
HUMAN PAPILLOMAVIRUS E7 PROTEIN (49 - 57)	ARG-ALA-HIS-TYR-ASN-ILE-VAL-THR-PHE
KISSPEPTIN-13 (4-13) (HUMAN)	TYR-ASN-TRP-ASN-SER-PHE-GLY-LEU-ARG-PHE-NH2
MELANOCYTE PROTEIN PMEL 17 (256-264) (HUMAN,BOVINE,MOUSE)	TYR-LEU-GLU-PRO-GLY-PRO-VAL-THR-ALA
MELITTIN(MELLITIN)	GLY-ILE-GLY-ALA-VAL-LEU-LYS-VAL-LEU-THR-THR-GLY-LEU-PRO-ALA-LEU-ILE-SER-TRP-ILE-LYS-ARG-LYS-ARG-GLN-GLN-NH2
[ASP371] TYROSINASE (369-377), HUMAN	TYR-MET-ASP-GLY-THR-MET-SER-GLN-VAL
[BETA]-AMYLOID (1-16)	ASP-ALA-GLU-PHE-ARG-HIS-ASP-SER-GLY-TYR-GLU-VAL-HIS-HIS-GLN-LYS
[BETA]-AMYLOID (12-28)	VAL-HIS-HIS-GLN-LYS-LEU-VAL-PHE-PHE-ALA-GLU-ASP-VAL-GLY-SER-ASN-LYS
[BETA]-AMYLOID (1-28)	ASP-ALA-GLU-PHE-ARG-HIS-ASP-SER-GLY-TYR-GLU-VAL-HIS-HIS-GLN-LYS-LEU-VAL-PHE-PHE-ALA-GLU-ASP-VAL-GLY-SER-ASN-LYS
[SER140]-MYELIN PROTEOLIPID PROTEIN (139-151) (DEPALMITOYLATED), HUMAN, BOVINE, DOG, MOUSE, RAT	HIS-SER-LEU-GLY-LYS-TRP-LEU-GLY-HIS-PRO-ASP-LYS-PHE

TECHNOLOGY

BANKPEPTIDE
BIOLOGICAL

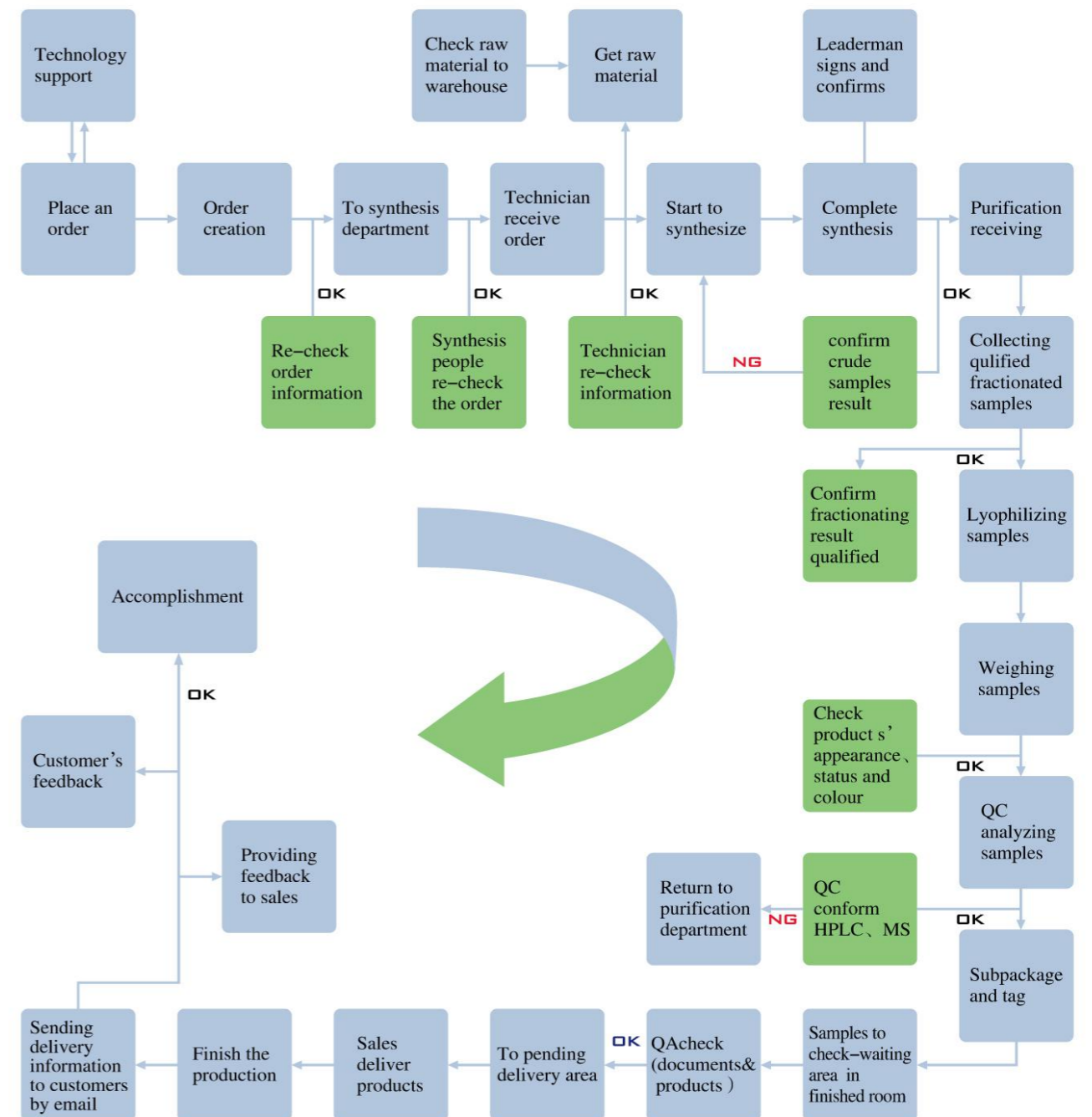
RESEARCH FACILITIES



QUALITY SYSTEM

ADHERING TO THE "QUALITY FIRST, SERVICE FIRST" BUSINESS PHILOSOPHY, AND REQUEST > ISO9001:2008< THE QUALITY MANAGEMENT SYSTEM >,BANKPEPTIDE PROVIDES CUSTOMERS WITH PRODUCTS AND SERVICES EXCEEDING CUSTOMERS' EXPECTATIONSTHROUGH THE EFFECTIVE IMPLEMENTATION AND CONTINUOUS IMPROVEMENT.

THROUGH CLOSE COMBINATION OF THE TARGET TASK OF VARIOUS DEPARTMENTS AND QUALITY OBJECTIVES UP TO REACH RIGOROUSLY, FROM THE CONSULTATION AND FEEDBACK, EXAMINATION AND APPROVAL OF ORDERS, R & D AND PRODUCTION, THE CONTROL FEEDBACK AND FINAL CONTROL PACKAGING, SHIPMENT RELEASE, TO PRODUCTS AND AFTER-SALES TRACKING AND TECHNICAL SUPPORT, FROM THE PROCESS FLOW PROCESS, PERSONNEL TRAINING, EQUIPMENT MAINTENANCE, RAW MATERIALS TO CONTROL, ENVIRONMENTAL MONITORING, WEENSURE AND CONTRIBUTE TO THE COMPANY QUALITY OBJECTIVES (CUSTOMER SATISFACTION 99%, TIMELY DELIVERY RATE OF 99%, CUSTOMER FEEDBACK PROCESSING RATE OF 100%) TO IMPLEMENT FULLY AND IMPROVE CONTINUOUSLY.



ENTERPRISE HONOR

BANKPEPTIDE BIOLOGICAL



PARTNER

BANKPEPTIDE BIOLOGICAL

