



2020 Prima Scientific Company Profile

SEPTEMBER 2020

BANGKOK THAILAND

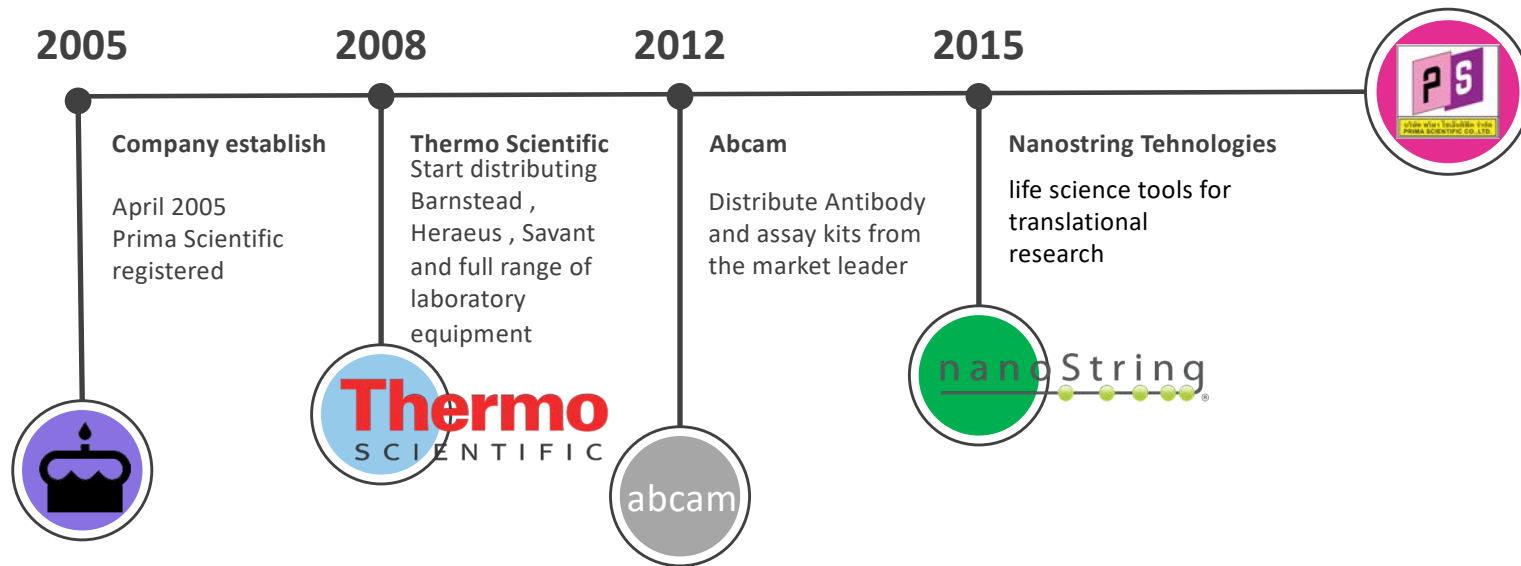
About us

ก่อตั้ง ขึ้นเมื่อ มิถุนายน พศ 2548

ด้วยความมุ่งมั่นที่จะให้บริการและจำหน่ายผลิตภัณฑ์คุณภาพสูง ให้แก่
ห้องปฏิบัติการ วิทยาศาสตร์ ชีวภาพ ของประเทศไทย และ ASEAN กลุ่ม
สินค้า ได้แก่ วัสดุ น้ำยาสำหรับการเตรียมตัวอย่าง (Sample
Preparation), การให้บริการสังเคราะห์และอ่านลำดับเบสสาร
พันธุกรรม (Genomics Service), น้ำยาสำหรับตรวจวินิจฉัยโรค
(Molecular Diagnostics), เครื่องมือและอุปกรณ์วิทยาศาสตร์
สำหรับห้องปฏิบัติการ ทั่วไปจนถึงเครื่องมือที่ใช้เทคโนโลยีขั้นสูง



Company Timeline



Management Team



พันธกิจของเรา

บริษัทได้คัดสรรผลิตภัณฑ์คุณภาพเยี่ยมจาก
ผู้ผลิตชั้นนำมาจำหน่ายในราคายุติธรรม
ส่งมอบสินค้าและบริการตรงเวลา
และยึดมั่นในคำสัญญา

Meet our Sales team



Representative Brands

abcam **Thermo** nanoString 
SCIENTIFIC

    Bankpeptide
ADVANCED CELL DIAGNOSTICS, INC. Quality-Affordable Research

PRIMER DESIGN   



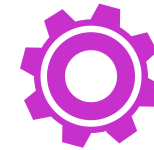
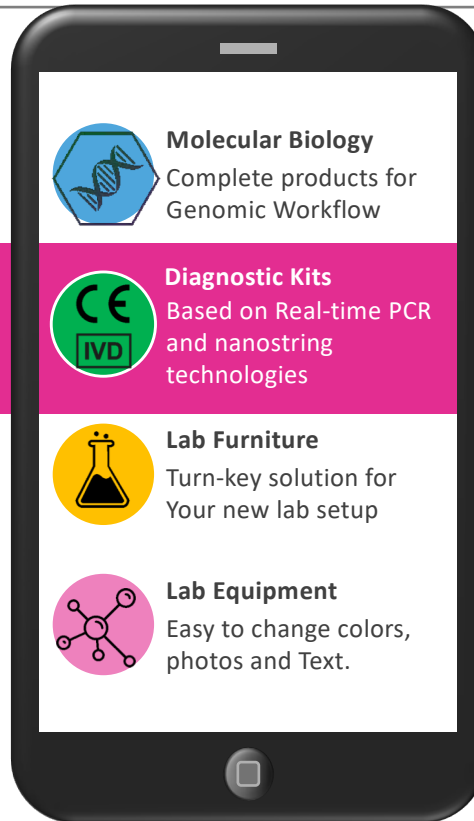
Products & Services

One stop service for your laboratory



Disposable , Reagent & Kits

- Lab Disposable Plasticware
- Antibody & Assay kits
- Custom Oligo & DNA Sequencing
- Nucleic Acid Extraction kits
- PCR Reagent
- Peptides and Protein characterization
- Molecular Diagnostic kits



Instrument & Equipment

- Laboratory Furniture & Fume Hood
- Centrifuge
- Laminar Flow & BioSafety Cabinet
- Incubator & CO2 Incubator
- Oven , Vacuum Oven & Fuenaces
- Cold Storage & Freezers
- Gel Imaging System
- Robotic Lab Automation

Product Groups

By Application/Laboratory

หมวดหมู่สินค้า

จำแนกตามApplicationและชนิดของห้องปฏิบัติการ



General Lab
Equipment



Cell Culture
Equipment



Genomics
Equipment



Clinical Diagnostics
Equipment

Laboratory Furniture

- Wall Bench Module
- Island Bench Model



Fume hoods



Oven & vacuum oven



Thermo
SCIENTIFIC

furnaces



Thermo
SCIENTIFIC

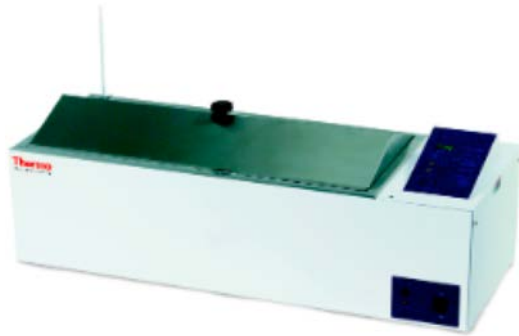
Refrigerator / freezer

Thermo
SCIENTIFIC



Heat / shake / stir

Thermo
SCIENTIFIC



Water purification system

Barnstead Smart2pure

Thermo
SCIENTIFIC



Laboratory Equipment & Supplies



Analytical and Precision Balances



Tabletop Centrifuge

Thermo
SCIENTIFIC



Compact Footprint

Maximized capacity and adaptability.

General Purpose 1.6L

Reliable, simple and comfortable.

General Purpose 4.0L

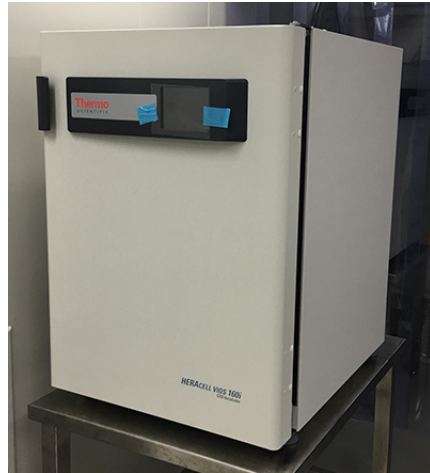
Versatile and unparalleled performance.

CO₂ Incubator

Thermo
SCIENTIFIC

Heracell Vios 160i

- 180°C Sterilization
- Stainless steel or Copper
- TCD or IR CO₂ sensor
- THRIVE active airflow
- iCAN Touch screen control
- ISO5 inside the chamber
- Optional tri-gas , build-in tank switcher



BB150

- 90°C Moist Heat Sterile
- Stainless steel chamber
- TCD CO₂ Sensor
- Panless Humidity system
- LED display with membrane keypads
- Optional external tank switcher

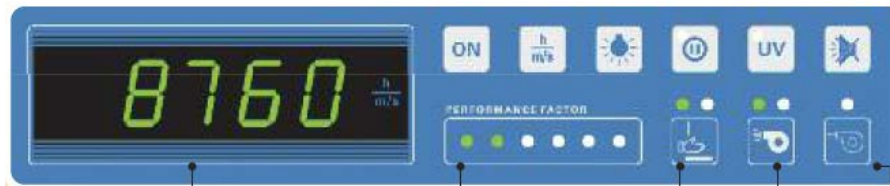


BioSafety Cabinet Class II

MSC Advantage 1.2

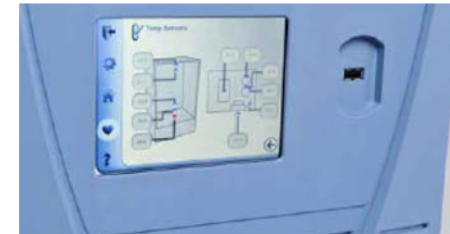
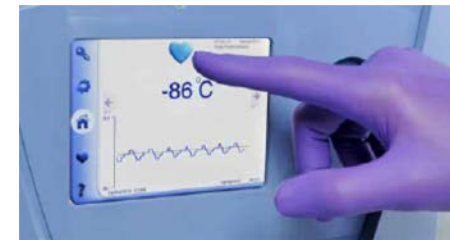
- Made in Germany
- Dual DC blowers
- Smart Flow & DAVE
- Performance Factor
- EN12469 certified
- Low energy consumption (200W/40W)
- Optional : direct duct , thimble duct ,
- additional Exhaust HEPA filter ..

Thermo
S C I E N T I F I C



Ultra low temp freezer

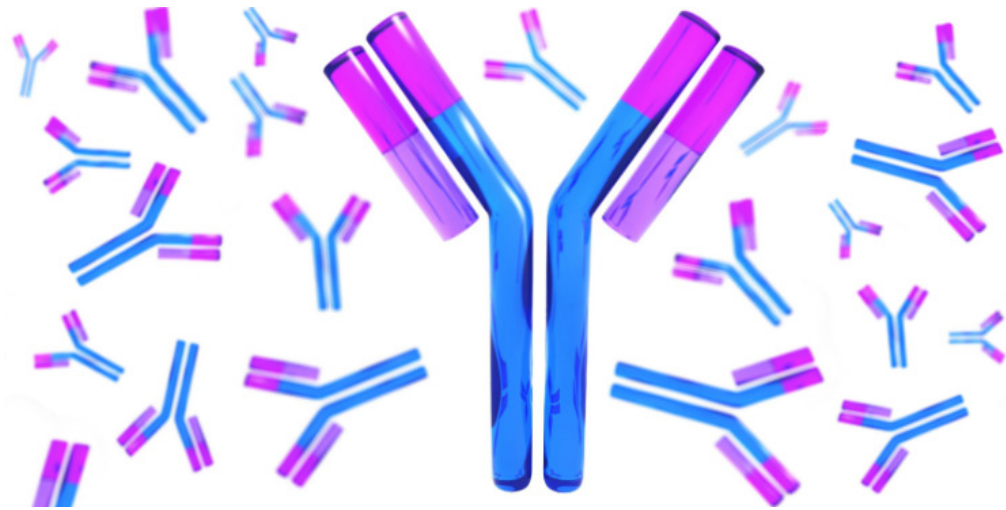
Thermo
SCIENTIFIC



Liquid N₂ Tanks Controlled Rate Freezer



Antibody



abcam



ELISA & Assay Kits



abcam



nCounter & GeoMx

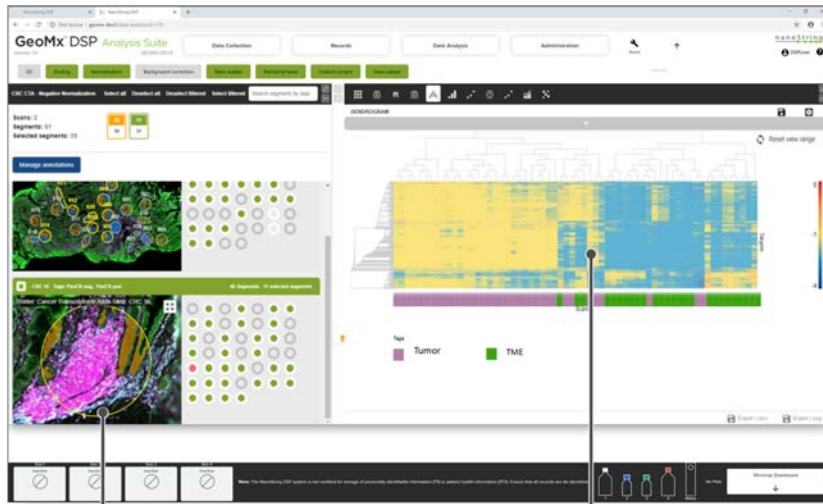


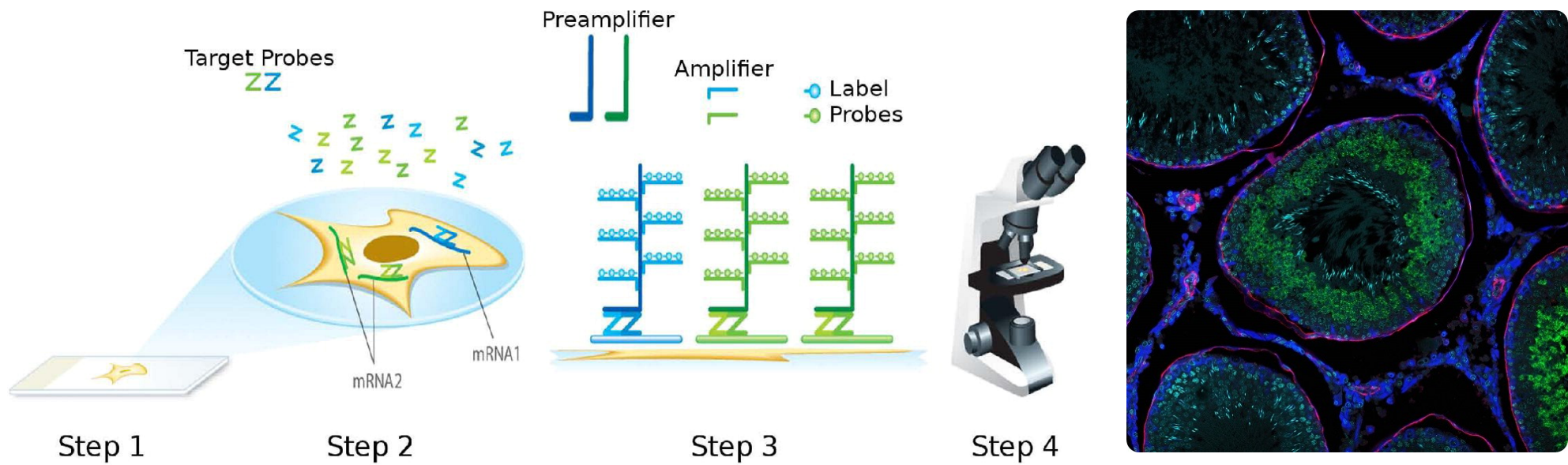
Image of ROI
4 of 24
(stroma)

100% traceability from profiling data to tissue image:
When specific profiling data is selected the GeoMx Data Analysis tool will automatically show the tissue image corresponding to a ROI and vice versa.

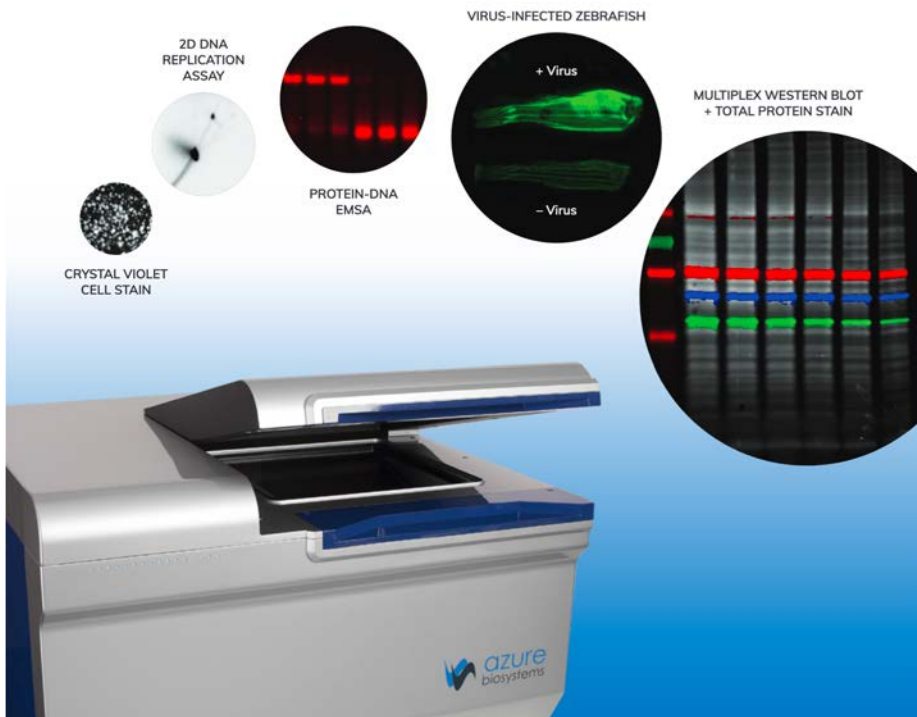
Profiling data
from ROI
4 of 24
(stroma)



RNAscope & BaseScope



Gel Imaging System



Plastic Labwares



www.extrogene-web.com

ExtraGene
Your Source Of Research Plastic

ISO 9001 / ISO13485 / CE

The banner features a blue background with a molecular structure motif. It includes several small inset images showing various labware products: pipette tips, multi-well plates, PCR plates, and other plastic components. The text 'ISO 9001 / ISO13485 / CE' is located at the bottom of the banner.



Nucleic acid Extraction kits



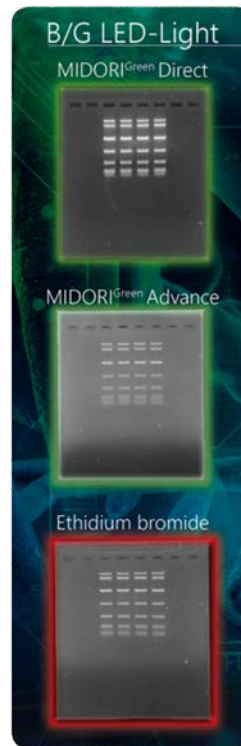
FAVORGEN The Professional Manufacturer of Nucleic Acid Extraction Kits

- Automatic Production in ISO 13485 Qualified Factory.
- Complete Product Lines: Column System, 96-Well System, Reagent
- Collaboration with Academic and Industrial Partners for Product Development & Quality Improving

Favorgen located in the national biotechnology park, Taiwan, constructs its ISO qualified factory with automation system for production of high-quality molecular biology products and clinical chemical reagents. Currently, Favorgen has set up its distributorship net over 30 countries in the world. Since being established, Favorgen has invested substantially in its state-of-the-art manufacturing facilities, to provide customers with high-quality products at very competitive prices. Favorgen is committed to developing research, both in-house and through collaboration with academic and industrial partners, in order to keep offering high-quality, innovation products.



Nippon Genetics



vs.



Kapa Biosystems – PCR reagents



Introducing **KAPA2G™ Fast HotStart**

A second-generation enzyme for the ultimate in speed and performance.

KAPA2G Fast HotStart combines a second-generation DNA polymerase engineered for extreme speed with HotStart technology for optimal performance.

The result is industry-leading performance:

- Extension rates as low as 1 sec per kilobase.
- Outstanding performance when compared to conventional hot start Taq polymerase.
- Savings in total reaction time of 20 - 70%.
- No specialist PCR consumables or instrumentation required.

Fragment Size (bp)	Wild-type Taq Hot Start (sec)	KAPA2G Fast Hot Start (sec)
100	~100	~25
250	~150	~35
500	~250	~50

KAPA BIOSYSTEMS
www.kapabiosystems.com

next generation thinking
in enzyme technology

Primer Design

PRIMER
DESIGN



Q16 Real-time PCR Cycler & EASY kits



COVID-19 Real-time PCR Kit (CE/IVD)

MicroArrayer & MicroArray Scanner

 **ARRAYJET**



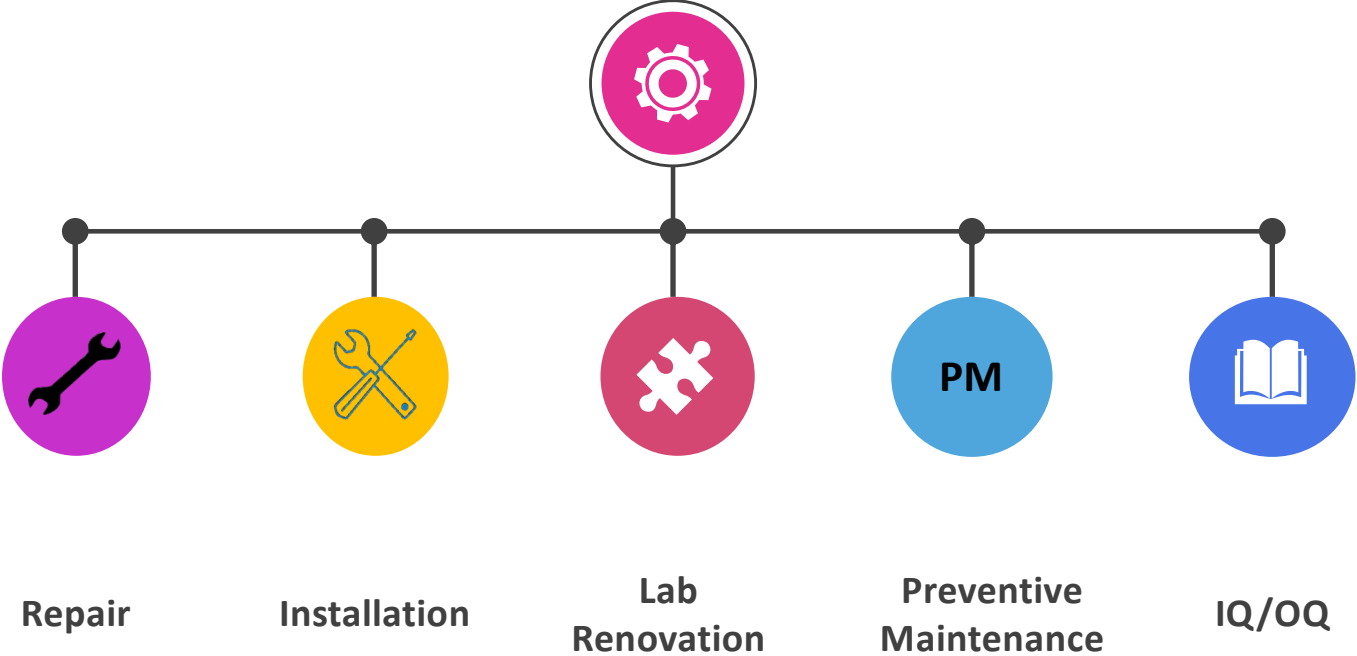
INNOPSYS



Meet our Service team



Our Services



Onsite training

