

Your tool for exceptional
western blots

abcam[®]
discover more

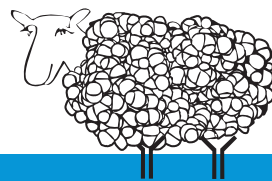
Do you routinely
perform western blots?



AbExcel

Secondary Antibodies

Then our extensively tested AbExcel secondaries range is the right product for you; 1500⁺ blots per vial of AP and 600⁺ blots per vial of HRP AbExcel secondary antibody.



Discover more at abcam.com/AbExcel

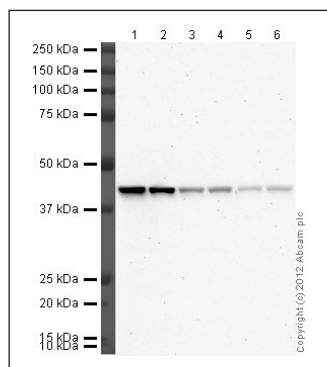
Alkaline phosphatase (AP) - AbExcel secondaries

Target species	Species raised in	Product code
Chicken IgY H&L	Rabbit	ab97137
Goat IgG H&L	Donkey	ab97107
	Rabbit	ab97097
Mouse IgG H&L	Goat	ab97020
	Rabbit	ab97043*
Rabbit IgG H&L	Donkey	ab97061
	Goat	ab97048
Rat IgG H&L	Goat	ab6846
	Rabbit	ab6735

All of our nine AbExcel AP-conjugated secondaries are:

- Extensively tested for WB in the Abcam labs
- Supplied at 1 mg/ml
- Based on a 1:5000 dilution in 3ml milk/BSA, you can do over **1600** blots with a **single** vial of antibody. However, as the antibodies can be used in dilutions of up to 1:50,000 you could potentially **get 16,000 blots out of a single vial.**

Rabbit polyclonal Secondary Antibody to Mouse IgG - H&L (AP) (ab97043*)



Lanes 1-6: HeLa whole cell lysate (10 µg per lane);
Anti-beta Actin antibody (ab8226) at 1 µg/ml

Secondary antibody:

Lanes 1 - 2: Rabbit polyclonal Secondary Antibody to Mouse IgG - H&L (AP) (ab97043) at 1/5000 dilution

Lanes 3 - 4: Rabbit polyclonal Secondary Antibody to Mouse IgG - H&L (AP) (ab97043) at 1/20,000 dilution

Lanes 5 - 6: Rabbit polyclonal Secondary Antibody to Mouse IgG - H&L (AP) (ab97043) at 1/50,000 dilution

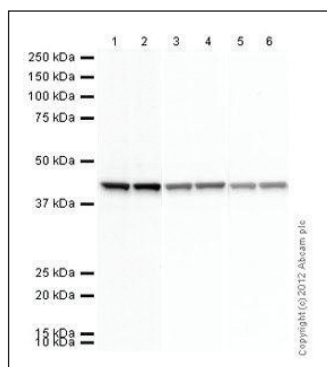
Horseradish peroxidase (HRP) - AbExcel secondaries

Target species	Species raised in	Product code
Chicken IgY H&L	Goat	ab97135
	Rabbit	ab97140
Goat IgG H&L	Donkey	ab97110
	Rabbit	ab97100
Mouse IgG H&L	Goat	ab97023
	Rabbit	ab97046
Rabbit IgG H&L	Donkey	ab16284
	Goat	ab97051*
Rat IgG H&L	Goat	ab97057
	Rabbit	ab102172

All of our ten AbExcel-HRP conjugated secondaries are:

- Extensively tested for WB in the Abcam labs
- Supplied at 1 mg/ml
- Based on a 1:2000 dilution in 3ml milk/BSA, you can do over **600** blots with a **single** vial of antibody. However, as the antibodies can be used in dilutions of up to 1:20,000 you could potentially **get 6000 blots out of a single vial.**

Goat polyclonal Secondary Antibody to Rabbit IgG - H&L (HRP) (ab97051*)



Lanes 1-6: HeLa whole cell lysate at (10 µg per lane);
Anti-beta Actin antibody (ab8226) at 1 µg/ml

Secondary antibody:

Lanes 1 - 2: Goat polyclonal Secondary Antibody to Rabbit IgG - H&L (HRP) (ab97051) at 1/2000 dilution

Lanes 3 - 4: Goat polyclonal Secondary Antibody to Rabbit IgG - H&L (HRP) (ab97051) at 1/10,000 dilution

Lanes 5 - 6: Goat polyclonal Secondary Antibody to Rabbit IgG - H&L (HRP) (ab97051) at 1/20,000 dilution

Unsure about which WB detection method to use?

Then have a look at our enzymatic detection guide:

Substrates	Applications	Advantages	Disadvantages
Alkaline Phosphatase (AP)			
Chromogenic, precipitating (BCIP/NBT, ...)	WB, SB, IHC	Staining stability higher than HRP	Interference with nuclear counterstain
Horseradish Peroxidase (HRP)			
Chromogenic, precipitating (CN, AEC, DAB, ...)	WB, SB, IHC	Easy to use	Background in blood samples and some other tissues. Staining stability lower than AP
Luminol	WB, SB, IHC	High sensitivity	Need radiographic equipment or light scanner

IHC: Immunohistochemistry

SB: Southern blot

WB: Western blot

Improve your western blots:

For more tips and tricks about how to improve your western blots and how to troubleshoot high background, unequal loading, weak signals or incomplete stripping check out our new Optiblot – western blot reagents and troubleshooting tips brochure.



Discover more at abcam.com/Optiblot