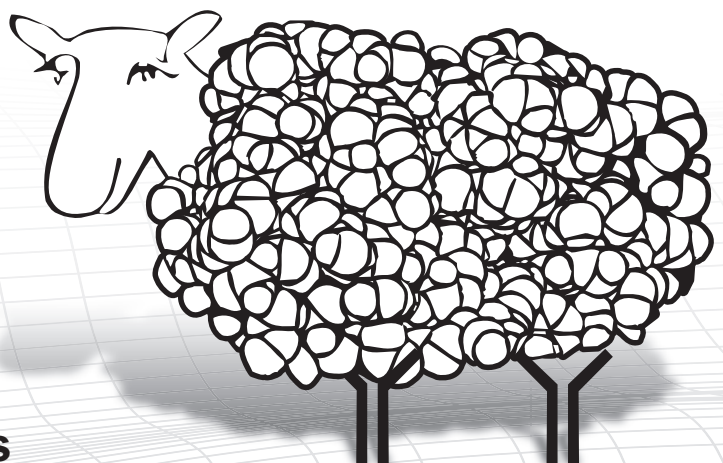




# Cytokines and Growth Factors



[www.abcam.com/proteins](http://www.abcam.com/proteins)

# Contents

## Welcome to Abcam

---

- About Abcam ..... 1
- Abreviews® and Abpoints® ..... 2

## Proteins product list

---

- **Cytokines and receptors** ..... 4
- Chemokine family ..... 4
- Common beta chain receptor family ..... 4
- Common gamma chain receptor family ..... 5
- EGF family ..... 7
- FGF family ..... 7
- IL1 ligands and IL1R family ..... 9
- IL6 family ..... 9
- IL10/Interferon family ..... 10
- IL17 family ..... 11
- TGFbeta superfamily ..... 11
  
- **Growth factors and receptors** ..... 13
- EGF family ..... 13
- Eph/Ephrin ..... 13
- FGF family ..... 14
- Hedgehog family ..... 15
- IGF family ..... 15
- TGFbeta superfamily ..... 16
- VEGF/PDGF family ..... 17
- Wnt family ..... 18

## Kits product list

---

- **Cytokine ELISA kits** ..... 19
- 1x96 well plate ..... 19
- 2x96 well plate ..... 20

## Pathway

---

- Cytokine Proteins Pathway ..... 21

## Ordering and contact details

---

- Contact details ..... 22
- Regional contacts ..... 22
- Local offices and distributors ..... 23
- Required information for ordering ..... 24
- Abcam's terms and conditions ..... 25

**Scientific support:** [www.abcam.com/technical](http://www.abcam.com/technical)  
**Protein resources:** [www.abcam.com/proteins](http://www.abcam.com/proteins)

# Welcome to Abcam

## About Abcam



Abcam, with offices in Cambridge, U.K., Cambridge, MA, U.S.A., Tokyo, Japan and Hong Kong was founded in 1998 by Dr. Jonathan Milner, then a researcher at Cambridge University, U.K.

“Like many life science researchers, I was frustrated by the time it took to locate and select antibodies essential for my research. This was largely due to poor information and out-of-date catalogs from the vast range of suppliers who were spread across many countries. In some cases, I also experienced difficulties with companies whose products were unreliable and whose customer service was slow and unhelpful. My vision was to build a company that offered reliable cutting-edge products and great customer service.”

It was a tough vision - Abcam was created to sell the best antibodies in the world with the most comprehensive, honest and up-to-date datasheets, fast delivery, helpful customer service and comprehensive technical support. Abcam also offers an ever expanding portfolio of proteins.

Several years on and with thousands of products across our range, Abcam ships to scientists in over 70 countries around the world. Abcam is committed to the following fundamental principles that have seen us become the first choice for thousands of life scientists throughout industry and academia:

- Quality of products and datasheets
- Helpful technical support and online technical resources
- Friendly customer service
- Fast delivery

## Comprehensive

We have a policy of honesty - our customers know everything that we know about our products, as soon as we know it. Everything we know about each product is posted on the datasheet. To achieve exceptional levels of quality for our customers we provide:

- Comprehensive datasheets
- Customers' Abreviews® of our products
- Product-specific protocols used by our customers
- Customers' technical questions and our answers for each product
- Product information and new products updated daily

## Helpful

Our Scientific Support and Customer Service departments are full of scientists that have many years of experience working with the types of products that we supply to our customers.

We provide continuous order progress updates, so that you always know what is happening with your order and when you should expect to receive it.



**Why review?**

We are building an online resource of the best products in the world and value both positive and negative feedback about how our products are performing in your hands. Abreviews® tell us what we need to work on and what we're already doing well! It also allows other scientists to find out how well a product is likely to work for them before making a purchase. This up-to-date information often provides useful data about new applications, optimal dilution conditions and images of our products at work.

Submit an Abreview now at: [www.abcam.com/abreviews](http://www.abcam.com/abreviews)

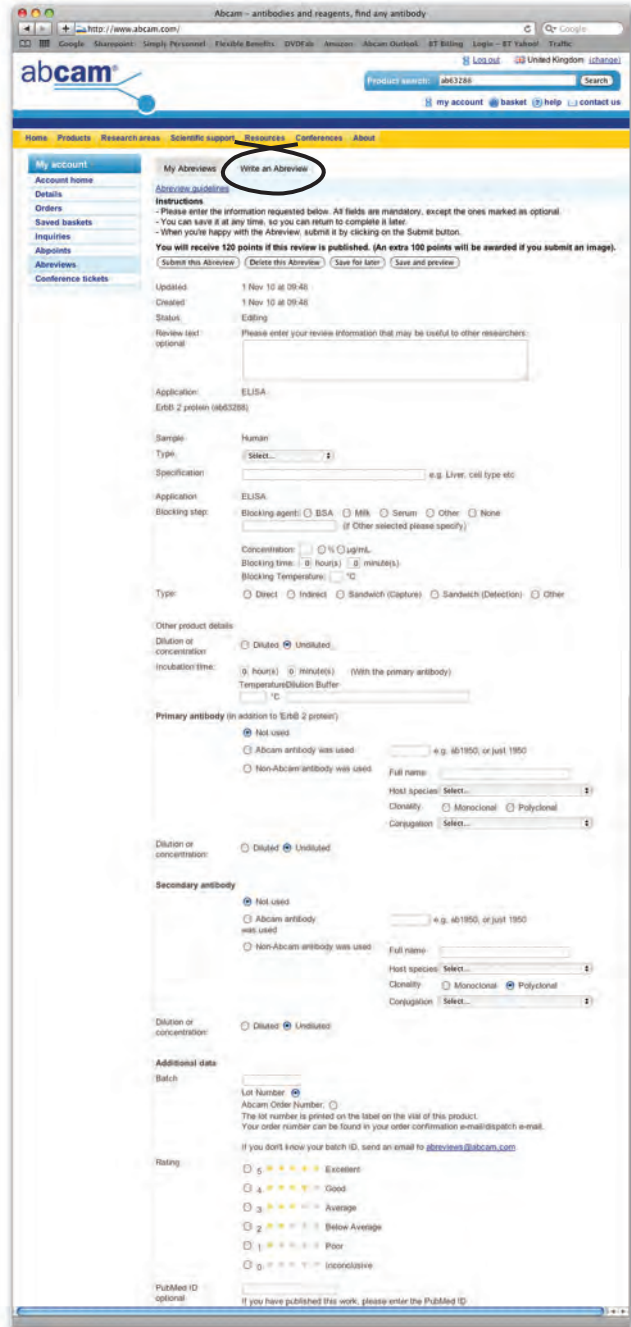
**Abpoints for every Abreview®**

We can offer from 50 up to 120 Abpoints based on submission time and type of application. The less characterized the product you review, the more Abpoints you will receive:

Time since last Abreview® (for protein/application combination)	Abpoints® earned
< 3 months	50
3 - 6 months	60
6 - 12 months	75
> 12 months	90
Product not yet reviewed	120

If you submit an image as well you will earn an extra 100 Abpoints! These can then be claimed back as rewards.

Find out more about Abpoints at: [www.abcam.com/abpoints](http://www.abcam.com/abpoints)



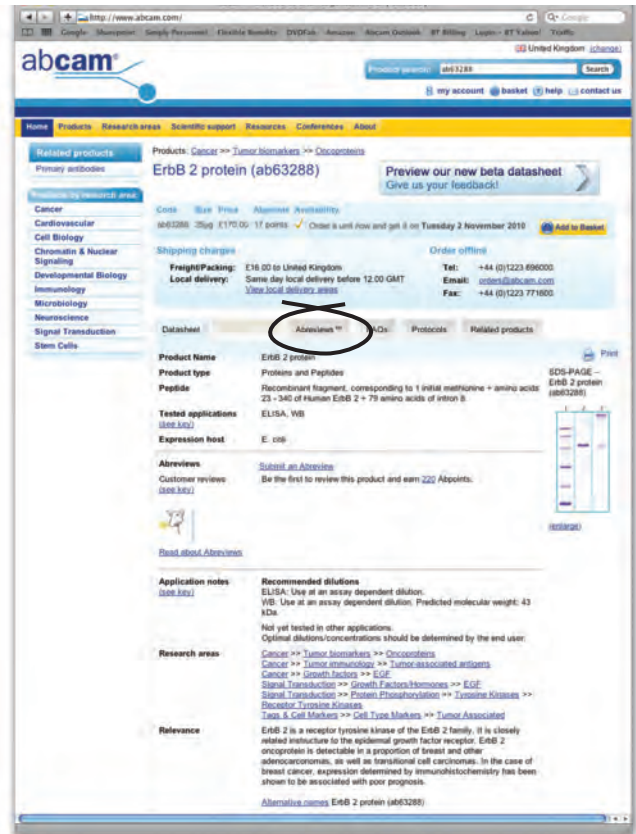
## How do I submit an Abreview®?

On the datasheet for the protein go to the 'Abreviews' tab and then follow the link to 'Submit an Abreview'. Then all you need to do is select the application and sample species (remember - you can submit feedback for each application you have used and get 50 Abpoints for each one). Furthermore, you get 100 extra Abpoints for submitting an image!

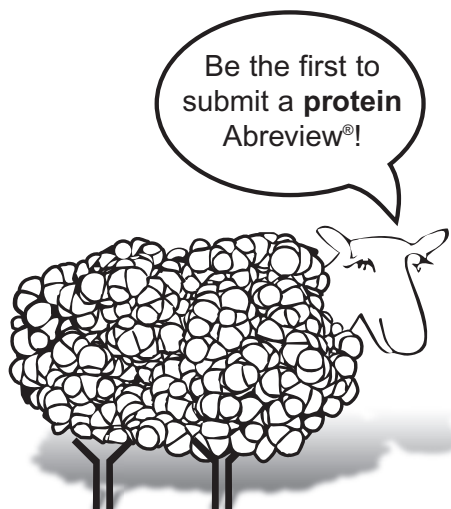
After that you simply need to work through the form we have set out. We hope that this will make the whole process as easy as possible for you and also provide us with the maximum amount of information for scientists reading the Abreview®.

## Short of time?

One new feature of Abreviews is that you can save the Abreview at any point and then return to complete it later. You can access all of your uncompleted Abreviews in the 'Your Account' section of our website.



Abreviews®





# Proteins product list | Cytokines and receptors

Cytokines act as humoral regulators which, either under normal or pathological conditions, modulate the functional activities of individual cells and tissues. Cytokines, produced widely throughout the body, also mediate interactions between cells directly and regulate processes taking place in the extracellular environment.

## Chemokine family

Main function(s): leukocyte trafficking, recruitment and activation

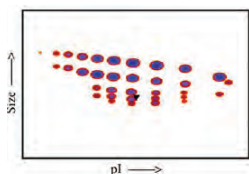
Protein name	Species	Expression system	Format	Applications	Datasheet www.abcam.com/...
CCL27 protein	Hu	E. coli	Full length	FuncS, SDS-PAGE	ab50060
CCL28 protein	Hu	E. coli	Full length	FuncS, SDS-PAGE	ab50075
CXCL11 protein	Ms	E. coli	Full length	FuncS, SDS-PAGE	ab50170
CXCL11 protein (Active)	Hu	E. coli	Full length	FuncS, SDS-PAGE	ab73838
Cxcl14/BRAK protein (Active)	Hu	E. coli	Full length	FuncS, SDS-PAGE	ab50043
CXCL16 protein (Active)	Hu	E. coli	Fragments	FuncS, SDS-PAGE	ab50175

## Common beta chain receptor family

Main function(s): hematopoietic cell signaling

Protein name	Species	Expression system	Format	Applications	Datasheet www.abcam.com/...
GM-CSF protein	Hu	E. coli	Full length	FuncS, SDS-PAGE	ab9668
GM-CSF protein	Hu	E. coli	Fragments	FuncS	ab48499
GM-CSF protein	Hu	E. coli	Full length	SDS-PAGE	ab51105
GM-CSF protein	Hu	Pichia Pastoris	Full length	FuncS, SDS-PAGE	ab73121
GM-CSF protein	Hrs	Yeast	Fragments	SDS-PAGE	ab87523
GM-CSF protein	Ms	E. coli	Full length	FuncS, SDS-PAGE	ab9742
GM-CSF protein (Active)	Rat	E. coli	Full length	FuncS, SDS-PAGE	ab49904
GM-CSF protein (Active)	Hu	293 cells	Full length	FuncS, SDS-PAGE	ab88382

### Functional Studies - GM-CSF protein (Active) (ab88382)



Densitometry of protein isoforms visualised by 2-DE.

The densitometry scan demonstrates the purified human cell expressed protein exists in multiple isoforms, which differ according to their level of post-translational modification.

The triangle indicates the theoretical MWt and pI of the protein.

GM-CSF protein (His tag)	Hu	293 cells	Fragments	SDS-PAGE	ab50999
GM-CSF protein (His tag)	Hu	E. coli	Fragments	SDS-PAGE	ab54138
GM-CSF Receptor alpha protein (Fc Chimera Active)	Hu	293 cells	Full length	SDS-PAGE	ab83993
IL3 protein	Hu	E. coli	Full length	FuncS, SDS-PAGE	ab9621
IL3 protein (Active)	Hu	293 cells	Full length	FuncS, SDS-PAGE	ab83685
IL3 protein (Active)	Hu	Endosperm tissue of barley grain	Full length	FuncS, SDS-PAGE	ab89575
IL3 protein (His tag)	Hu	E. coli	Full length	SDS-PAGE	ab53339
IL3RA protein (Fc Chimera)	Hu	293 cells	Fragments	FuncS, SDS-PAGE	ab88358
IL3RB protein (Fc Chimera)	Hu	293 cells	Full length	SDS-PAGE	ab83919
IL5 protein	Ms	E. coli	Full length	FuncS, SDS-PAGE	ab56292
IL5 protein	Dog	Yeast	Full length	SDS-PAGE	ab90799
IL5 protein	Cow	Yeast	Full length	SDS-PAGE	ab93914

Scientific support: [www.abcam.com/technical](http://www.abcam.com/technical)  
Protein resources: [www.abcam.com/proteins](http://www.abcam.com/proteins)

## Common beta chain receptor family (continued)

Protein name	Species	Expression system	Format	Applications	Datasheet www.abcam.com/...
IL5 protein	Hu	E. coli	Full length	FuncS, SDS-PAGE	ab9625
IL5 protein	Hrs	Yeast	Full length	SDS-PAGE	ab88009
IL5 protein (Active)	Hu	Endosperm tissue of barley grain	Full length	FuncS, SDS-PAGE	ab89580
IL5 protein (Active)	Rat	E. coli	Full length	SDS-PAGE	ab51963
IL5 protein (Active)	Rat	E. coli	Full length	FuncS, SDS-PAGE	ab73194
IL5 protein (Human)	Hu	293 cells	Full length	SDS-PAGE	ab83941
IL5RA protein (Fc Chimera)	Hu	293 cells	Fragments	SDS-PAGE	ab85983
IL5RA protein (Fc Chimera)	Hu	293 cells	Fragments	SDS-PAGE	ab83828

## Common gamma chain receptor family

Main function(s): T cell proliferation

Protein name	Species	Expression system	Format	Applications	Datasheet www.abcam.com/...
IL2 protein	Ms	E. coli	Full length	FuncS, SDS-PAGE	ab9856
IL2 protein	Dog	Yeast	Full length	SDS-PAGE	ab92800
IL2 protein	Chk	Yeast	Full length	SDS-PAGE	ab87392
IL2 protein	Cat	Yeast	Full length	SDS-PAGE	ab87503
IL2 protein	Rb	Yeast	Full length	SDS-PAGE	ab93916
IL2 protein	Hu	E. coli	Full length	FuncS, SDS-PAGE	ab9619
IL2 protein	Rat	E. coli	Full length	FuncS, SDS-PAGE	ab644
IL2 protein (Active)	Hu	293 cells	Full length	SDS-PAGE	ab83684
IL2 protein (Active)	Hrs	Yeast	Full length	FuncS, SDS-PAGE	ab87680
IL2 protein (Active)	Hu	E. coli	Full length	FuncS, SDS-PAGE	ab73598
IL2 protein (Active)	Cow	Yeast	Full length	FuncS, SDS-PAGE	ab87520
IL2 protein (Active)	Hu	Endosperm tissue of barley grain	Full length	FuncS, SDS-PAGE	ab88277
IL2 protein (His tag)	Hu	E. coli	Full length	SDS-PAGE	ab53322
IL2 protein (His tag)	Ms	E. coli	Full length	SDS-PAGE	ab87016
IL2 Receptor alpha protein	Hu	Baculovirus	Fragments	FuncS, SDS-PAGE	ab56232
IL2 Receptor alpha protein	Hu	E. coli	Fragments	FuncS, MS, SDS-PAGE	ab50139
IL2 Receptor alpha protein (Fc Chimera Active)	Hu	293 cells	Fragments	SDS-PAGE	ab84071

### SDS-PAGE - IL2 Receptor alpha protein (Fc Chimera Active) (ab84071)



A sample of ab84071 without carrier protein was reduced and alkylated and focused on a 3-10 IPG strip then run on a 4-20% Tris-HCl 2D gel.

40µg protein loaded per lane; Deep Purple™ stained. Spot train indicates presence of multiple isoforms.

Spots within the spot train were cut from the gel and identified as IL2 Receptor alpha (Fc Chimera) by protein mass fingerprinting.

IL2 Receptor beta protein (Fc Chimera Active)	Hu	293 cells	Fragments	SDS-PAGE	ab84068
IL4 protein	Ms	E. coli	Full length	FuncS, SDS-PAGE	ab9729
IL4 protein	Hu	E. coli	Full length	FuncS, SDS-PAGE	ab9623
IL4 protein (Active)	Hu	293 cells	Full length	FuncS, SDS-PAGE	ab83686
IL4 protein (Active)	Cow	Yeast	Full length	FuncS, SDS-PAGE	ab87679
IL4 protein (Active)	Hu	Endosperm tissue of barley grain	Full length	FuncS, SDS-PAGE	ab89578
IL4 protein (Active)	Rat	E. coli	Full length	FuncS, SDS-PAGE	ab9812

## Common gamma chain receptor family (continued)

Protein name	Species	Expression system	Format	Applications	Datasheet <a href="http://www.abcam.com/...">www.abcam.com/...</a>
IL4 protein (Active)	Hu	E. coli	Full length	FuncS, SDS-PAGE	ab73185
IL4 protein (Active)	Hu	CHO	Full length	FuncS, SDS-PAGE	ab73186
IL4 protein (Active)	Rat	E. coli	Full length	FuncS, SDS-PAGE	ab73188
IL4 protein (Active)	Pig	E. coli	Full length	FuncS, SDS-PAGE	ab73189
IL4 protein (Active)	Hrs	Yeast	Full length	CellAct, SDS-PAGE	ab87385
IL4 protein (His tag)	Hu	E. coli	Full length	SDS-PAGE	ab53342
IL4 protein (His tag)	Hu	E. coli	Full length	SDS-PAGE	ab73187
IL4 Receptor alpha protein	Hu	293 cells	Fragments	FuncS, SDS-PAGE	ab50023
IL4R alpha protein (Fc Chimera)	Hu	293 cells	Fragments	SDS-PAGE	ab83756
IL7 protein	Hu	E. coli	Fragments	SDS-PAGE	ab53371
IL7 protein	Hu	E. coli	Full length	FuncS, SDS-PAGE	ab9629
IL7 protein (Active)	Hu	Endosperm tissue of barley grain	Full length	FuncS, SDS-PAGE	ab89584
IL7 protein (Active)	Hu	Endosperm tissue of barley grain	Full length	FuncS, SDS-PAGE	ab73488
IL7 protein (Active)	Ms	E. coli	Full length	FuncS, SDS-PAGE	ab73489
IL7 protein (Active)	Hu	E. coli	Full length	FuncS, SDS-PAGE	ab73201
IL7R alpha protein (Fc Chimera)	Hu	293 cells	Fragments	SDS-PAGE	ab83827
IL9 protein	Ms	E. coli	Full length	FuncS, SDS-PAGE	ab51918
IL9 protein	Hu	E. coli	Full length	FuncS, SDS-PAGE	ab50119
IL9 protein	Rat	E. coli	Full length	SDS-PAGE	ab91257
IL9 protein (Active)	Hu	Endosperm tissue of barley grain	Full length	FuncS, SDS-PAGE	ab89586
IL9 protein (Active)	Hu	E. coli	Full length	FuncS, SDS-PAGE	ab73491
IL9 protein (Active)	Ms	E. coli	Full length	FuncS, SDS-PAGE	ab73603
IL15 protein	Pig	Yeast	Full length	SDS-PAGE	ab87901
IL15 protein	Cow	Yeast	Full length	SDS-PAGE	ab87927
IL15 protein	Ms	E. coli	Full length	FuncS, SDS-PAGE	ab51986
IL15 protein	Hu	E. coli	Full length	SDS-PAGE	ab53505
IL15 protein	Hu	E. coli	Full length	FuncS, SDS-PAGE	ab9583
IL15 protein	Rat	E. coli	Full length	FuncS, SDS-PAGE	ab49905
IL15 protein (Active)	Hrs	Yeast	Full length	FuncS, SDS-PAGE	ab87902
IL15 protein (Active)	Ms	E. coli	Full length	FuncS, SDS-PAGE	ab73500
IL15 protein (His tag)	Hu	E. coli	Full length	SDS-PAGE	ab73499
IL15 protein (His tag)	Ms	E. coli	Full length	SDS-PAGE	ab84338
IL21 protein	Hu	E. coli	Full length	SDS-PAGE	ab60287
IL21 protein	Cow	Yeast	Full length	SDS-PAGE	ab87467
IL21 protein (Active)	Hu	E. coli	Full length	FuncS, SDS-PAGE	ab73250
IL21 protein (Mouse)	Ms	E. coli	Full length	SDS-PAGE	ab93054

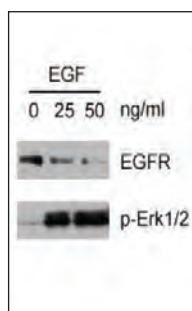


## EGF family

Main function(s): mitogenesis and differentiation of mesenchymal and epithelial cells

Protein name	Species	Expression system	Format	Applications	Datasheet www.abcam.com/...
EGF protein	Ms	E. coli	Full length	FuncS, SDS-PAGE	ab9863
EGF protein	Rat	E. coli	Full length	FuncS, SDS-PAGE	ab50240
EGF protein	Hu	E. coli	Full length	SDS-PAGE	ab51082
EGF protein	Hu	Baculovirus	Full length	FuncS, SDS-PAGE	ab55483
EGF protein (Active)	Hu	E. coli	Full length	CellAct, SDS-PAGE, WB	ab9697

### WB - EGF protein (Active) (ab9697)



#### Source

Recombinant full length (human)

#### Tested Applications

CellAct, SDS-PAGE, WB

#### Average Abreviews® Rating



**All lanes :** EGF protein (Active) (ab9697) was used at a concentration of 0, 25 or 50ng/ml

Phospho-p44/42 and MAPK (Erk 1/2) primary antibodies were used at a 1/1,000 dilution. An anti-rabbit HRP conjugated secondary antibody was used at a 1/10,000 dilution.

**Lane 1 :** Whole cell lysate of human skin fibroblasts starved overnight in serum-free medium

**Lane 2 :** Whole cell lysate of human skin fibroblasts starved overnight in serum-free medium and then incubated for 30 min with 25 ng/ml active EGF

**Lane 3 :** Whole cell lysate of human skin fibroblasts starved overnight in serum-free medium and then incubated for 30 min with 50 ng/ml active EGF

EGF protein (Active)	Ms	E. coli	Full length	FuncS, SDS-PAGE	ab72994
EGF protein (Active)	Hu	E. coli	Full length	FuncS, SDS-PAGE, WB	ab91371
EGFR protein	Hu	Baculovirus	Fragments	SDS-PAGE	ab68104
EGFR protein (Active)	Hu	Baculovirus	Fragments	ELISA, Inhib, WB	ab68900
EGFR protein (Active)	Hu	Baculovirus	Fragments	FuncS, WB	ab89746
EGFR protein (Fc Chimera Active)	Hu	293 cells	Fragments	FuncS, SDS-PAGE	ab84002
EGFR protein (Tagged)	Hu	E. coli	Full length	ELISA, Inhib, WB	ab38026
EGFR protein (Tagged)	Hu	Baculovirus	Fragments	FuncS	ab61264
ErbB 2 protein	Hu	E. coli	Fragments	ELISA, WB	ab63288
ErbB 2 protein	Hu	E. coli	Fragments	ELISA, Inhib, SDS-PAGE, WB	ab40048
ErbB 2 protein (Active)	Hu	Baculovirus	Fragments	FuncS, SDS-PAGE	ab60866
ErbB 3 protein (Tagged)	Hu	E. coli	Fragments	FuncS, SDS-PAGE	ab73634
ErbB 4 protein (Active)	Hu	Baculovirus	Fragments	FuncS, SDS-PAGE, WB	ab85602
ErbB 4 protein (Tagged)	Hu	Baculovirus	Fragments	FuncS, SDS-PAGE	ab61640
TGF alpha protein	Hu	E. coli	Full length	FuncS, SDS-PAGE	ab9587

## FGF family

Main function(s): angiogenesis, cell growth, pattern formation, embryonic development, metabolic regulation, cell migration, neurotrophic effects and tissue repair

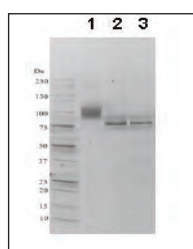
Protein name	Species	Expression system	Format	Applications	Datasheet www.abcam.com/...
FGF basic protein (Active)	Hu	E. coli	Full length	CellAct, SDS-PAGE	ab9596
FGF basic protein (Active)	Hu	E. coli	Fragments	FuncS, SDS-PAGE	ab61845
FGF basic protein (Active)	Hu	Baculovirus	Full length	FuncS, SDS-PAGE	ab73134
FGF basic protein (Active)	Cow	E. coli	Full length	FuncS, SDS-PAGE	ab73238
FGF basic protein (Active)	Hu	E. coli	Fragments	FuncS, SDS-PAGE	ab80215
FGF basic protein (Active)	Hu	Endosperm tissue of barley grain	Full length	FuncS, SDS-PAGE	ab88270
FGF basic protein (Active)	Hu	293 cells	Full length	FuncS, SDS-PAGE	ab88394
FGF basic protein (His tag)	Hu	Baculovirus	Full length	FuncS	ab82116
FGF4 protein	Hu	E. coli	Fragments	FuncS, SDS-PAGE	ab50131
FGF5 protein (Active)	Hu	E. coli	Full length	FuncS, SDS-PAGE	ab50229

Customer Service Tel: Europe +44-(0)1223-696000 | Hong Kong (852)-3793-3454  
Japan +81-(0)-3-6805-8450 | U.S.A. 1-617-225-2272 (Toll free: 1-888-77-ABCAM)

## FGF family (continued)

Protein name	Species	Expression system	Format	Applications	Datasheet www.abcam.com/...
FGF6 protein	Hu	E. coli	Fragments	FuncS, SDS-PAGE	ab50130
FGF8 protein	Hu	E. coli	Fragments	FuncS, SDS-PAGE	ab50128
FGF9 protein	Ms	E. coli	Full length	FuncS, SDS-PAGE	ab9745
FGF9 protein	Hu	E. coli	Full length	FuncS, SDS-PAGE	ab50034
FGF9 protein (Active)	Ms	E. coli	Full length	FuncS, SDS-PAGE	ab73212
FGF9 protein (Active)	Rat	E. coli	Full length	FuncS, SDS-PAGE	ab78476
FGF10 protein	Hu	E. coli	Full length	FuncS, SDS-PAGE	ab9989
FGF10 protein (Active)	Hu	E. coli	Full length	FuncS, SDS-PAGE	ab73196
FGF12 protein (His tag)	Hu	E. coli	Fragments	SDS-PAGE	ab79244
FGF16 protein	Hu	E. coli	Full length	FuncS, SDS-PAGE	ab9865
FGF-17 protein	Hu	E. coli	Full length	FuncS, SDS-PAGE	ab9991
FGF19 protein	Hu	E. coli	Fragments	FuncS, SDS-PAGE	ab50132
FGF19 protein (His tag)	Hu	E. coli	Full length	SDS-PAGE	ab55524
FGF19 protein (His tag)	Hu	E. coli	Full length	SDS-PAGE	ab73213
FGF20 protein	Hu	E. coli	Full length	FuncS, SDS-PAGE	ab50022
FGF21 protein	Hu	E. coli	Full length	FuncS, SDS-PAGE	ab54141
FGF21 protein	Ms	E. coli	Full length	ELISA, WB	ab63277
FGF21 protein (His tag)	Ms	E. coli	Full length	ELISA, SDS-PAGE, WB	ab64004
FGF22 protein	Hu	E. coli	Full length	SDS-PAGE	ab51793
FGFR1 alpha protein (Fc Chimera Active)	Hu	Baculovirus	Fragments	SDS-PAGE	ab55758
FGFR1 alpha protein (Fc Chimera)	Hu	293 cells	Fragments	SDS-PAGE	ab84000

### SDS-PAGE - FGFR1 alpha protein (Fc Chimera) (ab84000)



1D SDS-PAGE of ab84000 before and after treatment with glycosidases to remove oligosaccharides.

Lane 1: ab84000

Lane 2: ab84000 treated with PNGase F to remove potential N-linked glycans

Lane 3: ab84000 treated with a glycosidase cocktail to remove potential N- and O-linked glycans.  
10 µg protein was loaded per lane; Gel was stained with Deep Purple™.

FGFR1 Oncogene Partner protein (His tag)	Hu	E. coli	Fragments	ELISA, SDS-PAGE, WB	ab80035
FGFR1 protein (Active)	Hu	Baculovirus	Fragments	FuncS, SDS-PAGE	ab60853
FGFR1 protein (Fc Chimera Active)	Hu	Baculovirus	Fragments	FuncS, SDS-PAGE	ab73508
FGFR2 protein (Active)	Hu	Baculovirus	Fragments	SDS-PAGE	ab73854
FGFR2 protein (Active)	Hu	Baculovirus	Full length	FuncS, SDS-PAGE	ab80368
FGFR2 protein (Active)	Hu	Baculovirus	Fragments	FuncS, SDS-PAGE, WB	ab89755
FGFR2a + Fc Fragment protein (Active)	Hu	Baculovirus	Fragments	SDS-PAGE	ab55759
FGFR3 protein (Active)	Hu	Baculovirus	Fragments	FuncS, SDS-PAGE	ab60857
FGFR3 protein (Active)	Hu	Baculovirus	Full length	SDS-PAGE	ab73871
FGFR3a + Fc Fragment protein (Active)	Hu	Baculovirus	Fragments	SDS-PAGE	ab55760
FGFR4 protein (Active)	Hu	Baculovirus	Fragments	FuncS, SDS-PAGE, WB	ab89754
FGFR4 protein (Fc Chimera)	Hu	Baculovirus	Fragments	FuncS, SDS-PAGE	ab55761
FGFR4 protein (Fc Chimera)	Hu	293 cells	Fragments	SDS-PAGE	ab83999

## IL1 ligands and IL1R family

Main function(s): inflammation and host defense

Protein name	Species	Expression system	Format	Applications	Datasheet www.abcam.com/...
IL1 alpha protein	Cow	Yeast	Fragments	SDS-PAGE	ab87390
IL1 alpha protein	Hu	E. coli	Full length	FuncS, SDS-PAGE	ab9615
IL1 alpha protein	Ms	E. coli	Full length	FuncS, SDS-PAGE	ab9725
IL1 alpha protein	Rat	E. coli	Full length	FuncS, SDS-PAGE	ab9877
IL1 alpha protein (Active)	Hu	E. coli	Full length	FuncS, SDS-PAGE	ab73567
IL1 alpha protein (Active)	Ms	E. coli	Fragments	FuncS, SDS-PAGE	ab73570
IL1 alpha protein (Active)	Rat	E. coli	Fragments	FuncS, SDS-PAGE	ab73572
IL1 alpha protein (Active)	Pig	E. coli	Fragments	FuncS, SDS-PAGE	ab73573
IL1 alpha protein (Active)	Hu	Endosperm tissue of barley grain	Full length	FuncS, SDS-PAGE	ab88276
IL1 alpha protein (His tag)	Hu	E. coli	Fragments	SDS-PAGE	ab73569
IL1 alpha protein (His tag)	Hu	E. coli	Full length	SDS-PAGE	ab53665
IL1 beta protein	Pig	E. coli	Full length	FuncS, SDS-PAGE	ab60255
IL1 beta protein	Cat	Yeast	Full length	SDS-PAGE	ab87389
IL1 beta protein	Dog	Yeast	Full length	SDS-PAGE	ab87391
IL1 beta protein	Trky	Yeast	Fragments	SDS-PAGE	ab93084
IL1 beta protein	Cow	Yeast	Full length	SDS-PAGE	ab88013
IL1 beta protein	Hu	E. coli	Full length	FuncS, SDS-PAGE	ab9617
IL1 beta protein	Ms	E. coli	Full length	FuncS, SDS-PAGE	ab9723
IL1 beta protein	Rat	E. coli	Full length	FuncS, SDS-PAGE	ab9788
IL1 beta protein (Active)	Hu	E. coli	Fragments	FuncS, SDS-PAGE	ab73577
IL1 beta protein (Active)	Ms	E. coli	Fragments	FuncS, SDS-PAGE	ab73588
IL1 beta protein (Active)	Rat	E. coli	Fragments	FuncS, SDS-PAGE	ab73589
IL1 beta protein (Active)	Hrs	Yeast	Full length	FuncS, SDS-PAGE	ab87459
IL1 beta protein (His tag)	Hu	E. coli	Fragments	SDS-PAGE	ab73581
IL1 beta protein (His tag)	Ms	E. coli	Full length	SDS-PAGE	ab78839
IL1 beta protein (His tag)	Hu	E. coli	Full length	SDS-PAGE	ab53666
IL1 Receptor I protein (Fc Chimera)	Hu	293 cells	Fragments	SDS-PAGE	ab83575
IL18 protein (Active)	Rat	E. coli	Full length	FuncS, SDS-PAGE	ab73224
IL18 protein (Active)	Chk	Yeast	Full length	FuncS, SDS-PAGE	ab87525
IL18 protein (His tag)	Hu	E. coli	Fragments	SDS-PAGE	ab53332
IL33 protein	Ms	E. coli	Fragments	FuncS, SDS-PAGE	ab69516
IL33 protein	Hu	E. coli	Fragments	SDS-PAGE	ab72893
IL33 protein (Active)	Hu	E. coli	Fragments	FuncS, SDS-PAGE	ab82121
IL33 protein (His tag)	Hu	E. coli	Fragments	SDS-PAGE	ab82836
IL33 protein (His tag)	Hu	E. coli	Fragments	WB	ab82840

## IL6 family

Main function(s): activation of the signal transducing receptor protein, glycoprotein 130

Protein name	Species	Expression system	Format	Applications	Datasheet www.abcam.com/...
G-CSF protein	Ms	E. coli	Full length	FuncS, SDS-PAGE	ab9752
G-CSF protein	Hu	E. coli	Full length	FuncS, SDS-PAGE	ab9692
G-CSF protein (Active)	Hu	E. coli	Full length	FuncS, SDS-PAGE	ab51298
G-CSF protein (Active)	Hu	CHO	Full length	FuncS, SDS-PAGE	ab73371
G-CSF protein (Active)	Hu	293 cells	Full length	FuncS, SDS-PAGE	ab83995
G-CSF protein (Active)	Hu	Endosperm tissue of barley grain	Full length	FuncS, SDS-PAGE	ab88272
G-CSF protein (His tag)	Hu	E. coli	Fragments	SDS-PAGE	ab54137
GCSF Receptor protein (Fc Chimera Active)	Hu	293 cells	Fragments	FuncS, SDS-PAGE	ab83994
IL11 protein	Hu	E. coli	Full length	FuncS, SDS-PAGE	ab9553
IL11 protein (Active)	Ms	E. coli	Full length	FuncS, SDS-PAGE	ab69654
IL11 protein (Active)	Hu	E. coli	Full length	FuncS, SDS-PAGE	ab73620
IL31 protein	Hu	E. coli	Fragments	SDS-PAGE	ab50150
IL6 protein	Cow	Yeast	Full length	SDS-PAGE	ab87933

Customer Service Tel: Europe +44-(0)1223-696000 | Hong Kong (852)-3793-3454  
Japan +81-(0)-3-6805-8450 | U.S.A. 1-617-225-2272 (Toll free: 1-888-77-ABCAM)



## IL6 family (continued)

Protein name	Species	Expression system	Format	Applications	Datasheet www.abcam.com/...
IL6 protein	Ms	E. coli	Full length	FuncS, SDS-PAGE	ab9731
IL6 protein	Rat	E. coli	Full length	FuncS, SDS-PAGE	ab9771
IL6 protein	Pig	Yeast	Full length	SDS-PAGE	ab93913
IL6 protein	Hu	E. coli	Full length	FuncS, Neut, SDS-PAGE	ab9627
IL6 protein	Dog	Yeast	Full length	SDS-PAGE	ab88007
IL6 protein (Active)	Hu	293 cells	Full length	FuncS, SDS-PAGE	ab83748
IL6 protein (Active)	Hrs	Yeast	Full length	FuncS, SDS-PAGE	ab87934
IL6 protein (Active)	Hu	Endosperm tissue of barley grain	Full length	FuncS, SDS-PAGE	ab89582
IL6 protein (Active)	Hu	E. coli	Full length	FuncS, SDS-PAGE	ab73197
IL6 protein (Active)	Hu	CHO	Full length	FuncS, SDS-PAGE	ab73198
IL6 protein (Active)	Ms	E. coli	Full length	SDS-PAGE	ab73199
IL6 protein (Active)	Rat	E. coli	Full length	FuncS, SDS-PAGE	ab73200
IL6 protein (His tag)	Hu	E. coli	Full length	SDS-PAGE	ab53327
IL6R protein	Hu	293 cells	Full length	FuncS, SDS-PAGE	ab50082
IL6R protein	Hu	E. coli	Fragments	SDS-PAGE	ab53370

## IL10/Interferon family

Main function(s): host defense mechanisms

Protein name	Species	Expression system	Format	Applications	Datasheet www.abcam.com/...
IFN gamma Receptor beta protein (Fc Chimera)	Hu	293 cells	Fragments	SDS-PAGE	ab83988
IFNAR2 protein (Active)	Hu	Endosperm tissue of barley grain	Fragments	FuncS, SDS-PAGE	ab88273
IFNAR2 protein (Fc Chimera Active)	Hu	293 cells	Full length	FuncS, SDS-PAGE	ab83680
IFNE1 protein (Active)	Shp	E. coli	Full length	SDS-PAGE	ab73378
IFNGR1 protein (Fc Chimera Active)	Hu	293 cells	Fragments	SDS-PAGE	ab83990
IFNW1 protein (Active)	Hu	E. coli	Fragments	FuncS, SDS-PAGE	ab94351
IL10 protein	Hu	E. coli	Fragments	SDS-PAGE	ab53502
IL10 protein	Hu	E. coli	Fragments	FuncS, SDS-PAGE	ab9613
IL10 protein	Hu	293 cells	Full length	SDS-PAGE	ab84147
IL10 protein	Ms	E. coli	Fragments	FuncS, SDS-PAGE	ab9736
IL10 protein	Rat	E. coli	Fragments	FuncS, SDS-PAGE	ab9970
IL10 protein (Active)	Hu	CHO	Full length	FuncS, SDS-PAGE	ab73607
IL10 protein (Active)	Hu	E. coli	Full length	FuncS, SDS-PAGE	ab73609
IL10 protein (Active)	Ms	E. coli	Full length	FuncS, SDS-PAGE	ab73611
IL10 protein (Active)	Rat	E. coli	Full length	FuncS, SDS-PAGE	ab73612
IL10 protein (Active)	Pig	E. coli	Full length	FuncS, SDS-PAGE	ab73614
IL10 protein (Active)	Chk	Yeast	Full length	FuncS, SDS-PAGE	ab87526
IL19 protein (Active)	Ms	E. coli	Full length	FuncS, SDS-PAGE	ab51987
IL19 protein (Active)	Hu	E. coli	Full length	FuncS, SDS-PAGE	ab73282
IL20 protein (Active)	Hu	Endosperm tissue of barley grain	Full length	FuncS, SDS-PAGE	ab89672
IL20 protein (Active)	Ms	E. coli	Full length	SDS-PAGE	ab51977
IL20 protein (Active)	Ms	E. coli	Full length	FuncS, SDS-PAGE	ab73330
IL20 protein (Active)	Hu	E. coli	Full length	FuncS, SDS-PAGE	ab49819
IL22 protein	Ms	E. coli	Full length	SDS-PAGE	ab51988
IL22 protein	Hu	E. coli	Full length	FuncS, SDS-PAGE	ab49821
IL22 protein (Active)	Hu	Endosperm tissue of barley grain	Full length	FuncS, SDS-PAGE	ab89673
IL22 protein (Active)	Ms	E. coli	Full length	FuncS, SDS-PAGE	ab84083
IL24 protein (Active)	Hu	Yeast	Full length	FuncS, SDS-PAGE	ab73192
IL28A protein	Hu	E. coli	Full length	FuncS, SDS-PAGE	ab50037
IL28A protein	Ms	E. coli	Fragments	FuncS, SDS-PAGE	ab50172
IL29 protein	Hu	E. coli	Full length	FuncS, SDS-PAGE	ab50032

## IL17 family

Main function(s): induction of IL6, IL8 and GCSF production in fibroblasts, enhancement of surface expression of ICAM 1 in fibroblasts, activation of NF kappaB and costimulation of T cell proliferation

Protein name	Species	Expression system	Format	Applications	Datasheet www.abcam.com/...
IL17 protein	Cow	Yeast	Full length	SDS-PAGE	ab87905
IL17 protein	Ms	E. coli	Full length	FuncS, SDS-PAGE	ab50162
IL17 protein	Pig	Yeast	Full length	SDS-PAGE	ab92802
IL17 protein	Hu	E. coli	Full length	FuncS, SDS-PAGE	ab9567
IL17 protein (Active)	Rat	E. coli	Full length	SDS-PAGE	ab78597
IL17 protein (Active)	Hu	293 cells	Full length	SDS-PAGE	ab83769
IL17 protein (Active)	Hu	E. coli	Full length	FuncS, SDS-PAGE	ab73202
IL17 protein (His tag)	Hu	E. coli	Full length	MS, SDS-PAGE	ab40044
IL17 protein (His tag)	Hu	E. coli	Full length	SDS-PAGE	ab82830
IL17 protein (Ready to use SDS-Page sample)	Hu	E. coli	Full length	SDS-PAGE, WB	ab82831
IL17B protein (Active)	Hu	E. coli	Full length	FuncS, SDS-PAGE	ab50161
IL17D protein	Hu	E. coli	Fragments	SDS-PAGE	ab50158
IL17E protein	Hu	E. coli	Fragments	FuncS, SDS-PAGE	ab50145
IL17F protein	Hu	E. coli	Fragments	FuncS, SDS-PAGE	ab50157
IL17F protein	Ms	E. coli	Full length	SDS-PAGE	ab63229
IL17F protein	Hu	E. coli	Full length	SDS-PAGE	ab78475
IL17F protein (Active)	Hu	293 cells	Full length	SDS-PAGE	ab85600

## TGFbeta superfamily

Main function(s): tissue differentiation, morphogenesis, proliferation and migration

Protein name	Species	Expression system	Format	Applications	Datasheet www.abcam.com/...
Activin A Receptor Type IB protein (Active)	Hu	Baculovirus	Fragments	FuncS, SDS-PAGE	ab55682
Activin Receptor Type IA protein (Active)	Hu	Baculovirus	Fragments	FuncS, SDS-PAGE, WB	ab84539
Activin Receptor Type IA protein (Fc Chimera)	Hu	293 cells	Fragments	SDS-PAGE	ab83922
BMP2 protein	Hu	E. coli	Fragments	CellAct, SDS-PAGE	ab50099
BMP2 protein	Hu	E. coli	Full length	SDS-PAGE	ab87065
BMP3 protein (Active)	Hu	293 cells	Full length	FuncS, HPLC, SDS-PAGE	ab97412
BMP4 protein	Hu	E. coli	Full length	SDS-PAGE	ab51998
BMP4 protein	Hu	E. coli	Full length	SDS-PAGE	ab87063
BMP4 protein (MBP)	Hu	E. coli	Full length	ELISA, SDS-PAGE, WB	ab92855
BMP5 protein	Hu	E. coli	Full length	SDS-PAGE	ab87627
BMP6 protein	Hu	E. coli	Full length	SDS-PAGE	ab51760
BMP7 protein	Hu	CHO	Fragments	FuncS, SDS-PAGE	ab50100
BMP7 protein	Hu	E. coli	Full length	SDS-PAGE	ab55315
BMP7 protein	Hu	293 cells	Full length	SDS-PAGE	ab83921
BMP7 protein (His tag)	Hu	E. coli	Full length	SDS-PAGE	ab87055
BMP9 protein	Hu	CHO	Fragments	SDS-PAGE	ab94350
BMP11 protein	Hu	E. coli	Fragments	FuncS, SDS-PAGE	ab50159
BMPR1A protein (His tag)	Hu	Baculovirus	Fragments	FuncS, SDS-PAGE	ab55202
GDF3 protein	Hu	E. coli	Fragments	FuncS, Inhib, SDS-PAGE	ab50061
GDF 5 protein	Hu	E. coli	Full length	FuncS, SDS-PAGE	ab55329
GDF 5 protein	Hu	E. coli	Full length	SDS-PAGE	ab52315
GDF 5 protein (His tag)	Hu	E. coli	Full length	SDS-PAGE	ab86692
GDF6 protein	Hu	E. coli	Full length	FuncS, SDS-PAGE	ab50230
GDF8 / Myostatin protein	Hu	E. coli	Fragments	FuncS, Inhib, SDS-PAGE	ab50097
GDF8 / Myostatin protein (Active)	Hu	E. coli	Full length	FuncS, SDS-PAGE	ab73251
GDF8 / Myostatin protein (His tag)	Hu	E. coli	Full length	ELISA, WB	ab73281
GDF8 / Myostatin protein (Propeptide domain)	Hu	E. coli	Fragments	ELISA, WB	ab63300
GDF10 protein	Hu	E. coli	Full length	SDS-PAGE	ab86694
GDF15 protein	Hu	Cell culture	Full length	FuncS, SDS-PAGE	ab50077
GDF15 protein (His tag)	Hu	E. coli	Full length	SDS-PAGE	ab89235
GDNF protein	Hu	E. coli	Full length	FuncS, SDS-PAGE	ab9790

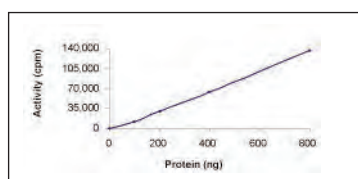
Customer Service Tel: Europe +44-(0)1223-696000 | Hong Kong (852)-3793-3454  
Japan +81-(0)-3-6805-8450 | U.S.A. 1-617-225-2272 (Toll free: 1-888-77-ABCAM)



## TGFbeta superfamily (continued)

Protein name	Species	Expression system	Format	Applications	Datasheet www.abcam.com/...
GDNF protein	Ms	E. coli	Fragments	FuncS, SDS-PAGE	ab56286
GDNF protein (Active)	Hu	E. coli	Full length	FuncS, SDS-PAGE	ab73450
TGF alpha protein	Hu	E. coli	Full length	FuncS, SDS-PAGE	ab9587
TGF beta 1 protein	Hu	293 cells	Full length	FuncS, SDS-PAGE	ab50036
TGF beta 1 protein	Hu	E. coli	Fragments	SDS-PAGE	ab51281
TGF beta 1 protein (Active)	Hu	CHO	Full length	FuncS, SDS-PAGE	ab50038
TGF beta 1 protein (His tag)	Hu	E. coli	Full length	SDS-PAGE	ab82991
TGF beta 1 protein (His tag)	Hu	E. coli	Full length	WB	ab82992
TGF beta 1 protein (Tagged)	Hu	E. coli	Fragments	ELISA, Inhib, WB	ab75964
TGF beta 2 protein	Hu	BTI-Tn-5B1-4 cells	Full length	FuncS, SDS-PAGE	ab629
TGF beta 2 protein (Active)	Hu	293 cells	Full length	FuncS, SDS-PAGE	ab84070
TGF beta 3 protein	Hu	E. coli	Fragments	ELISA, Inhib, WB	ab75565
TGF beta 3 protein (Active)	Hu	E. coli	Full length	FuncS, SDS-PAGE	ab52313
TGF beta Receptor I protein (Tagged)	Hu	Baculovirus	Fragments	SDS-PAGE	ab70837
TGF beta Receptor II protein (Fc Chimera)	Hu	293 cells	Fragments	SDS-PAGE	ab83578
TGF beta Receptor II protein (Tagged)	Hu	Baculovirus	Fragments	FuncS, SDS-PAGE	ab63173

### Functional Studies - TGF beta Receptor II protein (Tagged) (ab63173)



The specific activity of TGFβ<sub>2</sub> was determined to be 7 nmol/min/mg as per activity assay protocol in a kinase assay.

TGFBI protein	Hu	E. coli	Fragments	SDS-PAGE	ab86218
TGFBI protein	Hu	E. coli	Fragments	SDS-PAGE	ab73698
TGFBI protein	Hu	E. coli	Fragments	SDS-PAGE	ab86989



# Proteins product list | Growth factors and receptors

Growth factors are known for their ability to enhance cell proliferation across tissue types. They regulate angiogenesis, cell differentiation and neurite outgrowth amongst other processes.

## EGF family

Main function(s): mitogenesis and differentiation of mesenchymal and epithelial cells.

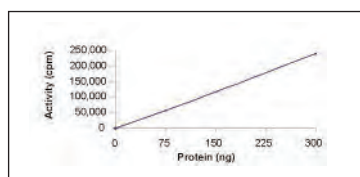
Protein name	Species	Expression system	Format	Applications	Datasheet www.abcam.com/...
EGF protein	Ms	E. coli	Full length	FuncS, SDS-PAGE	ab9863
EGF protein	Rat	E. coli	Full length	FuncS, SDS-PAGE	ab50240
EGF protein	Hu	E. coli	Full length	SDS-PAGE	ab51082
EGF protein	Hu	Baculovirus	Full length	FuncS, SDS-PAGE	ab55483
EGF protein (Active)	Hu	E. coli	Full length	CellAct, SDS-PAGE, WB	ab9697
EGF protein (Active)	Ms	E. coli	Full length	FuncS, SDS-PAGE	ab72994
EGF protein (Active)	Hu	E. coli	Full length	FuncS, SDS-PAGE, WB	ab91371
EGFR protein	Hu	Baculovirus	Fragments	SDS-PAGE	ab68104
EGFR protein (Active)	Hu	Baculovirus	Fragments	ELISA, Inhib, WB	ab68900
EGFR protein (Active)	Hu	Baculovirus	Fragments	FuncS, WB	ab89746
EGFR protein (Fc Chimera Active)	Hu	293 cells	Fragments	FuncS, SDS-PAGE	ab84002
EGFR protein (Tagged)	Hu	E. coli	Full length	ELISA, Inhib, WB	ab38026
EGFR protein (Tagged)	Hu	Baculovirus	Fragments	FuncS	ab61264
ErbB 2 protein	Hu	E. coli	Fragments	ELISA, WB	ab63288
ErbB 2 protein	Hu	E. coli	Fragments	ELISA, Inhib, SDS-PAGE, WB	ab40048
ErbB 2 protein (Active)	Hu	Baculovirus	Fragments	FuncS, SDS-PAGE	ab60866
ErbB 3 protein (Tagged)	Hu	E. coli	Fragments	FuncS, SDS-PAGE	ab73634
ErbB 4 protein (Active)	Hu	Baculovirus	Fragments	FuncS, SDS-PAGE, WB	ab85602
ErbB 4 protein (Tagged)	Hu	Baculovirus	Fragments	FuncS, SDS-PAGE	ab61640
TGF alpha protein	Hu	E. coli	Full length	FuncS, SDS-PAGE	ab9587

## Eph/Ephrin

Main function(s): mediating repulsive cell-cell interaction

Protein name	Species	expression system	Format	Applications	Datasheet www.abcam.com/...
Eph receptor A1 protein (Tagged)	Ms	Baculovirus	Fragments	FuncS, SDS-PAGE	ab55900

### Functional Studies - Eph receptor A1 protein (Tagged) (ab55900)



The specific activity of EPHA1 was determined to be 32 nmol/min/mg as per activity assay protocol in a kinase assay.

Eph receptor A3 protein (Active)	Hu	Baculovirus	Fragments	FuncS, SDS-PAGE, WB	ab84576
Eph receptor A4 protein (Active)	Hu	Baculovirus	Fragments	FuncS, SDS-PAGE, WB	ab84575
Eph receptor B1 protein (Active)	Ms	Baculovirus	Fragments	SDS-PAGE	ab56257
Eph receptor B2 protein (Active)	Hu	Baculovirus	Fragments	FuncS, SDS-PAGE	ab60851
Eph receptor B2 protein (His tag)	Hu	Baculovirus	Fragments	Inhib	ab42607
Eph receptor B3 protein (Active)	Hu	Baculovirus	Fragments	FuncS, SDS-PAGE	ab51409
Eph receptor B4 protein (Active)	Hu	Baculovirus	Fragments	FuncS, SDS-PAGE, WB	ab85713

Customer Service Tel: Europe +44-(0)1223-696000 | Hong Kong (852)-3793-3454  
Japan +81-(0)-3-6805-8450 | U.S.A. 1-617-225-2272 (Toll free: 1-888-77-ABCAM)

## Eph/Ephrin (continued)

Protein name	Species	Expression system	Format	Applications	Datasheet www.abcam.com/...
Eph receptor B4 protein (His tag)	Hu	Baculovirus	Fragments	Inhib	ab42608
Ephrin A1 protein (Human)	Hu	Sc	Full length	SDS-PAGE	ab88269
Ephrin A1 protein (Tagged)	Hu	E. coli	Full length	ELISA, Inhib, WB	ab38036
Ephrin A4 protein (Tagged)	Hu	E. coli	Full length	ELISA, Inhib, WB	ab38037
Ephrin B protein (Tagged)	Hu	E. coli	Full length	ELISA, Inhib, SDS-PAGE, WB	ab38038
Ephrin B2 protein (Fc Chimera His Tag)	Hu	293 cells	Fragments	ELISA, SDS-PAGE, WB	ab92862
Ephrin B3 protein (Tagged)	Hu	E. coli	Full length	ELISA, Inhib, WB	ab38039

## FGF family

Main function(s): angiogenesis, cell growth, pattern formation, embryonic development, metabolic regulation, cell migration, neurotrophic effects and tissue repair

Protein name	Species	Expression system	Format	Applications	Datasheet www.abcam.com/...
FGF basic protein (Active)	Hu	E. coli	Full length	CellAct, SDS-PAGE	ab9596
FGF basic protein (Active)	Hu	E. coli	Fragments	FuncS, SDS-PAGE	ab61845
FGF basic protein (Active)	Hu	Baculovirus	Full length	FuncS, SDS-PAGE	ab73134
FGF basic protein (Active)	Cow	E. coli	Full length	FuncS, SDS-PAGE	ab73238
FGF basic protein (Active)	Hu	E. coli	Fragments	FuncS, SDS-PAGE	ab80215
FGF basic protein (Active)	Hu	Endosperm tissue of barley grain	Full length	FuncS, SDS-PAGE	ab88270
FGF basic protein (Active)	Hu	293 cells	Full length	FuncS, SDS-PAGE	ab88394
FGF basic protein (His tag)	Hu	Baculovirus	Full length	FuncS	ab82116
FGF4 protein	Hu	E. coli	Fragments	FuncS, SDS-PAGE	ab50131
FGF5 protein (Active)	Hu	E. coli	Full length	FuncS, SDS-PAGE	ab50229
FGF6 protein	Hu	E. coli	Fragments	FuncS, SDS-PAGE	ab50130
FGF8 protein	Hu	E. coli	Fragments	FuncS, SDS-PAGE	ab50128
FGF9 protein	Ms	E. coli	Full length	FuncS, SDS-PAGE	ab9745
FGF9 protein	Hu	E. coli	Full length	FuncS, SDS-PAGE	ab50034
FGF9 protein (Active)	Ms	E. coli	Full length	FuncS, SDS-PAGE	ab73212
FGF9 protein (Active)	Rat	E. coli	Full length	FuncS, SDS-PAGE	ab78476
FGF10 protein	Hu	E. coli	Full length	FuncS, SDS-PAGE	ab9989
FGF10 protein (Active)	Hu	E. coli	Full length	FuncS, SDS-PAGE	ab73196
FGF12 protein (His tag)	Hu	E. coli	Fragments	SDS-PAGE	ab79244
FGF16 protein	Hu	E. coli	Full length	FuncS, SDS-PAGE	ab9865
FGF-17 protein	Hu	E. coli	Full length	FuncS, SDS-PAGE	ab9991
FGF19 protein	Hu	E. coli	Fragments	FuncS, SDS-PAGE	ab50132
FGF19 protein (His tag)	Hu	E. coli	Full length	SDS-PAGE	ab55524
FGF19 protein (His tag)	Hu	E. coli	Full length	SDS-PAGE	ab73213
FGF20 protein	Hu	E. coli	Full length	FuncS, SDS-PAGE	ab50022
FGF21 protein	Hu	E. coli	Full length	FuncS, SDS-PAGE	ab54141
FGF21 protein	Ms	E. coli	Full length	ELISA, WB	ab63277
FGF21 protein (His tag)	Ms	E. coli	Full length	ELISA, SDS-PAGE, WB	ab64004
FGF22 protein	Hu	E. coli	Full length	SDS-PAGE	ab51793
FGFR1 alpha protein (Fc Chimera Active)	Hu	Baculovirus	Fragments	SDS-PAGE	ab55758
FGFR1 alpha protein (Fc Chimera)	Hu	293 cells	Fragments	SDS-PAGE	ab84000
FGFR1 Oncogene Partner protein (His tag)	Hu	E. coli	Fragments	ELISA, SDS-PAGE, WB	ab80035
FGFR1 protein (Active)	Hu	Baculovirus	Fragments	FuncS, SDS-PAGE	ab60853
FGFR1 protein (Fc Chimera Active)	Hu	Baculovirus	Fragments	FuncS, SDS-PAGE	ab73508
FGFR2 protein (Active)	Hu	Baculovirus	Fragments	SDS-PAGE	ab73854
FGFR2 protein (Active)	Hu	Baculovirus	Full length	FuncS, SDS-PAGE	ab80368
FGFR2 protein (Active)	Hu	Baculovirus	Fragments	FuncS, SDS-PAGE, WB	ab89755
FGFR2a + Fc Fragment protein (Active)	Hu	Baculovirus	Fragments	SDS-PAGE	ab55759
FGFR3 protein (Active)	Hu	Baculovirus	Fragments	FuncS, SDS-PAGE	ab60857
FGFR3 protein (Active)	Hu	Baculovirus	Full length	SDS-PAGE	ab73871
FGFR3a + Fc Fragment protein (Active)	Hu	Baculovirus	Fragments	SDS-PAGE	ab55760
FGFR4 protein (Active)	Hu	Baculovirus	Fragments	FuncS, SDS-PAGE, WB	ab89754

## FGF family (continued)

Protein name	Species	Expression system	Format	Applications	Datasheet www.abcam.com/...
FGFR4 protein (Fc Chimera)	Hu	Baculovirus	Fragments	FuncS, SDS-PAGE	ab55761
FGFR4 protein (Fc Chimera)	Hu	293 cells	Fragments	SDS-PAGE	ab83999

## Hedgehog family

Main function(s): autocatalytic processing

Protein name	Species	Expression system	Format	Applications	Datasheet www.abcam.com/...
Dhh protein (His tag)	Hu	E. coli	Fragments	SDS-PAGE	ab78682
Sonic Hedgehog protein (Active)	Ms	E. coli	Fragments	FuncS, SDS-PAGE	ab75431
Sonic Hedgehog protein (Active)	Hu	E. coli	Full length	FuncS, SDS-PAGE	ab82127
Sonic Hedgehog protein (Amino end active)	Hu	Baculovirus]	Fragments	FuncS, SDS-PAGE	ab63216
Sonic Hedgehog protein (His tag)	Ms	E. coli	Fragments	SDS-PAGE	ab95307

## IGF family

Main function(s): proliferation of muscle, bone, and cartilage tissue

Protein name	Species	expression system	Format	Applications	Datasheet www.abcam.com/...
IGF1 protein	Ms	E. coli	Full length	FuncS, SDS-PAGE	ab9861
IGF1 protein	Hu	E. coli	Full length	FuncS, SDS-PAGE	ab9573
IGF1 protein (Active)	Gilthead Seabream	E. coli	Full length	FuncS, SDS-PAGE	ab73850
IGF1 protein (Active)	Hu	E. coli	Fragments	FuncS, SDS-PAGE	ab73455
IGF1 protein (Active)	Hu	E. coli	Fragments	FuncS	ab73457
IGF1 protein (Active)	Ms	E. coli	Full length	FuncS	ab73458
IGF1 protein (Active)	Rat	E. coli	Full length	FuncS	ab73459
IGF1 protein (Active)	Hu	Endosperm tissue of barley grain	Full length	FuncS, SDS-PAGE	ab88275
IGF1 protein (Human)	Hu	E. coli	Full length	SDS-PAGE	ab87177
IGF1 protein	Rat	E. coli	Full length	FuncS, SDS-PAGE	ab52006
IGF1 Receptor beta subunit protein (Active)	Hu	Baculovirus	Fragments	FuncS, SDS-PAGE	ab80349
IGF1 Receptor protein	Hu	E. coli	Fragments	ELISA, Inhib, SDS-PAGE, WB	ab83637
IGF1 Receptor protein (Active)	Hu	Baculovirus	Fragments	FuncS, SDS-PAGE	ab71657
IGF2 protein	Ms	E. coli	Full length	SDS-PAGE	ab58827
IGF2 protein	Trky	Yeast	Full length	SDS-PAGE	ab97703
IGF2 protein	Hu	E.coli	Full length	FuncS, SDS-PAGE	ab9575
IGF2 protein (Active)	Hu	E. coli	Fragments	FuncS, SDS-PAGE	ab73495
IGFBP1 protein (Active)	Hu	E. coli	Full length	FuncS, SDS-PAGE	ab50216
IGFBP2 protein (Active)	Hu	Baculovirus	Full length	FuncS, SDS-PAGE	ab63223
IGFBP3 protein	Hu	E. coli	Fragments	Inhib, SDS-PAGE	ab49831
IGFBP3 protein (Active)	Hu	293 cells	Full length	FuncS, SDS-PAGE	ab88368
IGFBP4 protein	Hu	BTI-Tn-5B1-4 Cells	Full length	FuncS, SDS-PAGE	ab69504
IGFBP5 protein	Hu	E. coli	Full length	FuncS, Inhib, SDS-PAGE	ab49835
IGFBP5 protein (Active)	Hu	E. coli	Full length	FuncS, SDS-PAGE	ab73492
IGFBP6 protein (His tag)	Hu	E. coli	Fragments	SDS-PAGE	ab40515
IGFBP6 protein (His tag)	Hu	E. coli	Fragments	WB	ab73561
IGFBP7 protein	Hu	E. coli	Full length	SDS-PAGE	ab50195

## TGFbeta superfamily

Main function(s): tissue differentiation, morphogenesis, proliferation and migration

Protein name	Species	Expression system	Format	Applications	Datasheet www.abcam.com/...
Activin A Receptor Type IB protein (Active)	Hu	Baculovirus	Fragments	FuncS, SDS-PAGE	ab55682
Activin Receptor Type IA protein (Active)	Hu	Baculovirus	Fragments	FuncS, SDS-PAGE, WB	ab84539
Activin Receptor Type IA protein (Fc Chimera)	Hu	293 cells	Fragments	SDS-PAGE	ab83922
BMP2 protein	Hu	E. coli	Fragments	CellAct, SDS-PAGE	ab50099
BMP2 protein	Hu	E. coli	Full length	SDS-PAGE	ab87065
BMP3 protein (Active)	Hu	293 cells	Full length	FuncS, HPLC, SDS-PAGE	ab97412
BMP4 protein	Hu	E. coli	Full length	SDS-PAGE	ab51998
BMP4 protein	Hu	E. coli	Full length	SDS-PAGE	ab87063
BMP4 protein (MBP)	Hu	E. coli	Full length	ELISA, SDS-PAGE, WB	ab92855
BMP5 protein	Hu	E. coli	Full length	SDS-PAGE	ab87627
BMP6 protein	Hu	E. coli	Full length	SDS-PAGE	ab51760
BMP7 protein	Hu	CHO	Fragments	FuncS, SDS-PAGE	ab50100
BMP7 protein	Hu	E. coli	Full length	SDS-PAGE	ab55315
BMP7 protein	Hu	293 cells	Full length	SDS-PAGE	ab83921
BMP7 protein (His tag)	Hu	E. coli	Full length	SDS-PAGE	ab87055
BMP9 protein	Hu	CHO	Fragments	SDS-PAGE	ab94350
BMP11 protein	Hu	E. coli	Fragments	FuncS, SDS-PAGE	ab50159
BMPR1A protein (His tag)	Hu	Baculovirus	Fragments	FuncS, SDS-PAGE	ab55202
GDF3 protein	Hu	E. coli	Fragments	FuncS, Inhib, SDS-PAGE	ab50061
GDF 5 protein	Hu	E. coli	Full length	FuncS, SDS-PAGE	ab55329
GDF 5 protein	Hu	E. coli	Full length	SDS-PAGE	ab52315
GDF 5 protein (His tag)	Hu	E. coli	Full length	SDS-PAGE	ab86692
GDF6 protein	Hu	E. coli	Full length	FuncS, SDS-PAGE	ab50230
GDF8 / Myostatin protein	Hu	E. coli	Fragments	FuncS, Inhib, SDS-PAGE	ab50097
GDF8 / Myostatin protein (Active)	Hu	E. coli	Full length	FuncS, SDS-PAGE	ab73251
GDF8 / Myostatin protein (His tag)	Hu	E. coli	Full length	ELISA, WB	ab73281
GDF8 / Myostatin protein (Propeptide domain)	Hu	E. coli	Fragments	ELISA, WB	ab63300
GDF10 protein	Hu	E. coli	Full length	SDS-PAGE	ab86694
GDF15 protein	Hu	Cell culture	Full length	FuncS, SDS-PAGE	ab50077
GDF15 protein (His tag)	Hu	E. coli	Full length	SDS-PAGE	ab89235
GDNF protein	Hu	E. coli	Full length	FuncS, SDS-PAGE	ab9790
GDNF protein	Ms	E. coli	Fragments	FuncS, SDS-PAGE	ab56286
GDNF protein (Active)	Hu	E. coli	Full length	FuncS, SDS-PAGE	ab73450
TGF alpha protein	Hu	E. coli	Full length	FuncS, SDS-PAGE	ab9587
TGF beta 1 protein	Hu	293 cells	Full length	FuncS, SDS-PAGE	ab50036
TGF beta 1 protein	Hu	E. coli	Fragments	SDS-PAGE	ab51281
TGF beta 1 protein (Active)	Hu	CHO	Full length	FuncS, SDS-PAGE	ab50038
TGF beta 1 protein (His tag)	Hu	E. coli	Full length	SDS-PAGE	ab82991
TGF beta 1 protein (His tag)	Hu	E. coli	Full length	WB	ab82992
TGF beta 1 protein (Tagged)	Hu	E. coli	Fragments	ELISA, Inhib, WB	ab75964
TGF beta 2 protein	Hu	BTI-Tn-5B1-4 cells	Full length	FuncS, SDS-PAGE	ab629
TGF beta 2 protein (Active)	Hu	293 cells	Full length	FuncS, SDS-PAGE	ab84070
TGF beta 3 protein	Hu	E. coli	Fragments	ELISA, Inhib, WB	ab75565
TGF beta 3 protein (Active)	Hu	E. coli	Full length	FuncS, SDS-PAGE	ab52313
TGF beta Receptor I protein (Tagged)	Hu	Baculovirus	Fragments	SDS-PAGE	ab70837
TGF beta Receptor II protein (Fc Chimera)	Hu	293 cells	Fragments	SDS-PAGE	ab83578
TGF beta Receptor II protein (Tagged)	Hu	Baculovirus	Fragments	FuncS, SDS-PAGE	ab63173
TGFBI protein	Hu	E. coli	Fragments	SDS-PAGE	ab86218
TGFBI protein	Hu	E. coli	Fragments	SDS-PAGE	ab73698
TGFBI protein	Hu	E. coli	Fragments	SDS-PAGE	ab86989

## VEGF/PDGF family

Main function(s): tumor formation, embryonic development and wound healing

Protein name	Species	expression system	Format	Applications	Datasheet www.abcam.com/...
PDGF AA protein	Hu	E. coli	Full length	FuncS, SDS-PAGE	ab9702
PDGF AA protein	Hu	E. coli	Fragments	SDS-PAGE	ab53372
PDGF AA protein (Active)	Hu	E. coli	Full length	FuncS, SDS-PAGE	ab73226
PDGF AA protein (Active)	Ms	E. coli	Full length	SDS-PAGE	ab78590
PDGF AB protein (Active)	Hu	E. coli	Full length	FuncS, SDS-PAGE	ab52112
PDGF AB protein (Active)	Hu	E. coli	Full length	FuncS, SDS-PAGE	ab73228
PDGF BB protein	Hu	E. coli	Full length	FuncS, SDS-PAGE	ab9706
PDGF BB protein (Active)	Ms	E. coli	Full length	FuncS, SDS-PAGE	ab51925
PDGF BB protein (Active)	Hu	Sc	Full length	FuncS, SDS-PAGE	ab73229
PDGF BB protein (Active)	Ms	E. coli	Full length	FuncS, SDS-PAGE	ab73233
PDGF BB protein (Active)	Ms	E. coli	Full length	SDS-PAGE	ab78593
PDGF BB protein (Active)	Hu	E. coli	Full length	FuncS, SDS-PAGE	ab79746
PDGF BB protein (Active)	Hu	293 cells	Full length	FuncS, SDS-PAGE	ab88356
PDGF BB protein (Active)	Hu	Endosperm tissue of barley grain	Full length	FuncS, SDS-PAGE	ab89686
PDGF BB protein (His tag)	Hu	E. coli	Fragments	SDS-PAGE	ab53374
PDGF BB protein (His tag)	Hu	E. coli	Full length	SDS-PAGE	ab73231
PDGF CC protein (Active)	Hu	E. coli	Fragments	FuncS, SDS-PAGE	ab84066
PDGF Receptor alpha protein (Active)	Ms	Baculovirus	Fragments	FuncS, SDS-PAGE	ab60755
PDGF Receptor alpha protein (Active)	Hu	Baculovirus	Fragments	FuncS, WB	ab84797
PDGF Receptor beta protein (Active)	Hu	Baculovirus	Fragments	FuncS, SDS-PAGE	ab60833
PDGFAA + PDGFBB protein	Hu	E. coli	Full length	FuncS, SDS-PAGE	ab61903
VEGF 121 protein	Hu	E. coli	Full length	FuncS, SDS-PAGE	ab61872
VEGF 121 protein	Hu	E. coli	Full length	SDS-PAGE	ab86935
VEGF 121B protein (Active)	Hu	293 cells	Full length	FuncS, SDS-PAGE	ab88348
VEGF 121B protein (Active)	Hu	Endosperm tissue of barley grain	Full length	FuncS, SDS-PAGE	ab89573
VEGF 165A protein	Rat	E. coli	Full length	SDS-PAGE	ab51967
VEGF 165A protein	Hu	E. coli	Full length	FuncS, SDS-PAGE	ab56620
VEGF 165A protein	Hu	E. coli	Fragments	FuncS, SDS-PAGE	ab61861
VEGF 165A protein (Active)	Ms	E. coli	Full length	FuncS, SDS-PAGE	ab62134
VEGF 165A protein (Active)	Hu	293 cells	Full length	FuncS, SDS-PAGE	ab83572
VEGF 165A protein (Active)	Hu	Endosperm tissue of barley grain	Full length	FuncS, SDS-PAGE	ab89574
VEGF protein	Hu	E. coli	Full length	CellAct, FuncS, SDS-PAGE	ab9571
VEGF protein	Ms	E. coli	Full length	FuncS, SDS-PAGE	ab9954
VEGF protein	Hu	E. coli	Full length	FuncS, SDS-PAGE	ab50078
VEGF protein	Hu	Baculovirus	Full length	SDS-PAGE	ab53824
VEGF protein	Cow	Yeast	Full length	SDS-PAGE	ab88201
VEGF protein (Active)	Hu	CHO	Fragments	FuncS, SDS-PAGE	ab73277
VEGF protein (Active)	Ms	Baculovirus	Fragments	FuncS, SDS-PAGE	ab73279
VEGF protein (Active)	Rat	E. coli	Fragments	FuncS, SDS-PAGE	ab92846
VEGF protein (His tag)	Hu	E. coli	Full length	SDS-PAGE	ab55566
VEGF Receptor 1 protein	Hu	Baculovirus	Fragments	FuncS, SDS-PAGE	ab54343
VEGF Receptor 1 protein	Hu	Baculovirus	Full length	FuncS, SDS-PAGE	ab54346
VEGF Receptor 1 protein (Active)	Hu	Baculovirus	Fragments	FuncS, SDS-PAGE	ab54344
VEGF Receptor 1 protein (Active)	Hu	Baculovirus	Fragments	FuncS, SDS-PAGE	ab54345
VEGF Receptor 1 protein (Active)	Hu	Baculovirus	Full length	FuncS, SDS-PAGE, WB	ab84771
VEGF Receptor 1 protein (Fc Chimera)	Hu	Baculovirus	Fragments	FuncS, SDS-PAGE	ab54258
VEGF Receptor 1 protein (His tag)	Hu	Baculovirus	Full length	Inhib	ab42609
VEGF Receptor 1 protein (His tag)	Hu	E. coli	Fragments	SDS-PAGE	ab62948
VEGF Receptor 2 protein	Hu	Baculovirus	Fragments	FuncS, SDS-PAGE	ab54347
VEGF Receptor 2 protein (Fc Chimera)	Hu	Baculovirus	Fragments	FuncS, SDS-PAGE	ab54259
VEGF Receptor 2 protein (Tagged)	Hu	Baculovirus	Full length	Inhib	ab42614
VEGF Receptor 3 protein (Active)	Hu	Baculovirus	Fragments	FuncS, SDS-PAGE	ab73644
VEGF Receptor 3 protein (Active)	Hu	Baculovirus	Fragments	FuncS, SDS-PAGE	ab95247
VEGF Receptor 3 protein (Fc Chimera)	Hu	Baculovirus	Full length	FuncS, SDS-PAGE	ab54261
VEGF Receptor 3 protein (His tag)	Hu	Baculovirus	Full length	FuncS, SDS-PAGE	ab54260

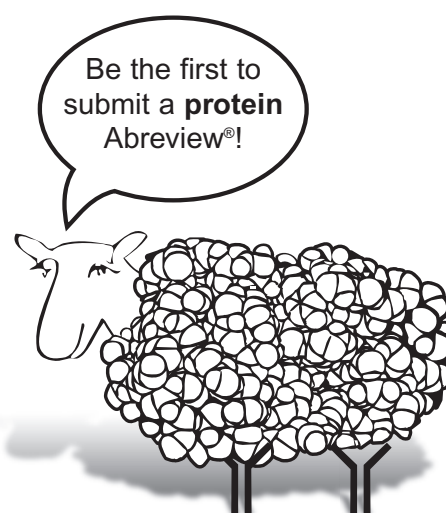
## VEGF/PDGF family (continued)

Protein name	Species	Expression system	Format	Applications	Datasheet www.abcam.com/...
VEGFB protein (His tag)	Hu	E. coli	Full length	SDS-PAGE	ab87052
VEGFC protein	Ms	E. coli	Full length	FuncS, SDS-PAGE	ab51947
VEGFC protein	Hu	E. coli	Full length	SDS-PAGE	ab51968
VEGFC protein	Hu	293 cells	Full length	SDS-PAGE	ab83573
VEGFC protein (His tag)	Rat	Baculovirus	Full length	SDS-PAGE	ab52146
VEGFE protein	Hu	Baculovirus	Fragments	SDS-PAGE	ab51001
VEGFE protein (His tag)	Hu	E. coli	Full length	SDS-PAGE	ab53679

## Wnt family

Main function(s): embryonic development, tissue regeneration

Protein name	Species	expression system	Format	Applications	Datasheet www.abcam.com/...
WISP1 protein (Active)	Hu	E. coli	Full length	FuncS, SDS-PAGE	ab50041
WISP2 protein (Active)	Hu	E. coli	Full length	FuncS, SDS-PAGE	ab50040
WISP3 protein (Active)	Hu	E. coli	Full length	FuncS, SDS-PAGE	ab50049
Wnt1 protein (Active)	Hu	E. coli	Full length	FuncS, SDS-PAGE	ab84080
Wnt3a protein (Active)	Ms	from cell culture	Full length	CellAct, SDS-PAGE	ab81484



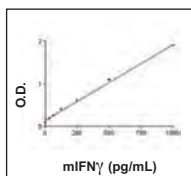


# Kits product list | Cytokine ELISA kits

1 x 96 well plate

Target	Reacts with	Range (pg/mL)	Sensitivity	Datasheet <a href="http://www.abcam.com/...">www.abcam.com/...</a>
GM-CSF	Ms	15.6 - 500	< 9 pg/mL	ab46078
GM-CSF Receptor alpha	Hu	31.25 - 1000	< 16 pg/mL	ab46086
IL1 alpha	Hu	31.2 - 1000	< 10 pg/mL	ab46028
IL1 beta	Hu	15.6 - 500	< 5 pg/mL	ab46030
IL2	Ms	15.6 - 500	< 5 pg/mL	ab46096
IL2	Hu	31.2 - 1000	< 10 pg/mL	ab46033
IL2	Hu	1.87 - 60	< 0.97 pg/mL	ab46054
IL2R	Hu	68.75 - 2220	< 8 pg/mL	ab46036
IL4	Hu	0.31 - 10	< 0.31 pg/mL	ab46063
IL4	Hu	1.1 - 58	< 0.5 pg/mL	ab46058
IL4	Rt	31.25 - 1000	< 15 pg/mL	ab46073
IL4R	Hu	31.25 - 1000	< 11.5 pg/mL	ab46022
IL5	Hu	7.8 - 250	< 5 pg/mL	ab46026
IL6	Ms	15.6 - 500	< 10 pg/mL	ab46100
IL6	Hu	6.25 - 200	< 2 pg/mL	ab46027
IL6	Hu	1.56 - 50	< 0.8 pg/mL	ab46042
IL6R	Hu	31.25 - 1000	< 5 pg/mL	ab46029
IL7	Hu	6.25 - 200	< 3 pg/mL	ab46031
IL8	Hu	62.5 - 2000	< 25 pg/mL	ab46032
IL10	Ms	31025 - 1000	< 20 pg/mL	ab46103
IL10	Hu	12.5 - 400	< 5 pg/mL	ab46034
IL10	Hu	1.56 - 50	< 1.30 pg/mL	ab46059
IL10	Hu	6.25 - 200	< 5.7 pg/mL	ab83700
IL12	Hu	6.25 - 200	< 3 pg/mL	ab46101
IL12	Hu	0.78 - 25	< 0.75 pg/mL	ab46035
IL12B	Hu	62.5 - 2000	< 20 pg/mL	ab46037
IL13	Hu	3.12 - 100	< 1.5 pg/mL	ab46038
IL13R alpha2	Hu	156 - 5000	< 150 pg/mL	ab46066
IL17	Hu	3.12 - 100	< 3 pg/mL	ab83688
IL23	Hu	5000 - 156.25	< 20 pg/mL	ab64708
IL27	Hu	31.25 - 1000	< 12.8 pg / mL	ab83695
IFN gamma	Ms	31.25 - 1000	< 15 pg/mL	ab46081

## ELISA Review - Mouse Interferon gamma ELISA Kit (ab46081)



ELISA kit ab46081 was given an 'excellent' customer rating recently. 🌟🌟🌟🌟🌟

Sample: Mouse Serum (Plasma)  
 Specification: Plasma  
 Amount of Sample: 10 µg  
 Positive Control: C57Bl/6 male mice 8 weeks of age were treated with LPS IP 1mg/kg (0111:B4). After 4 hours blood was collected in EDTA coated tubes. 1:10 dilutions of plasma were made with standard diluent and used for ELISA. All samples (1:10 diluted) were in range of the standard curve.

Did you use the Abcam Kit protocol? Yes

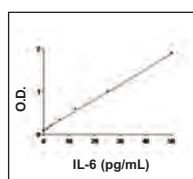
**Typical mIFN gamma standard curve ranging from 31.25 to 1000 pg/mL**

IFN gamma	Hu, Mk	12.5 - 400	< 5 pg/mL	ab46025
IFN gamma	Hu	0.78 - 25	< 0.69 pg/mL	ab46048
IFN gamma	Rt	31.25 - 1000	< 10 pg/mL	ab46107

## 2 x 96 well plate

Target	Reacts with	Range (pg/mL)	Sensitivity	Datasheet <a href="http://www.abcam.com/...">www.abcam.com/...</a>
GM-CSF	Ms	15.6 - 500	< 9 pg/mL	ab46119
GM-CSFR alpha	Hu	31.25 - 1000	< 16 pg/mL	ab46094
IL1 alpha	Hu	31.2 - 1000	< 10 pg/mL	ab46051
IL1 beta	Hu	15.6 - 500	< 5 pg/mL	ab46052
IL2	Ms	15.6 - 500	< 5 pg/mL	ab46097
IL2	Hu	31.2 - 1000	< 10 pg/mL	ab46053
IL2	Hu	1.87 - 60	< 0.97 pg/mL	ab46055
IL2R	Hu	68.75 - 2220	< 8 pg/mL	ab46056
IL4	Hu	0.31 - 10	< 0.31 pg/mL	ab46021
IL4	Hu	1.1 - 58	< 0.5 pg/mL	ab46060
IL4	Rt	31.25 - 1000	< 15 pg/mL	ab46071
IL4R	Hu	31.25 - 1000	< 11.5 pg/mL	ab46039
IL5	Hu	7.8 - 250	< 5 pg/mL	ab46040
IL6	Ms	15.6 - 500	< 10 pg/mL	ab46102
IL6	Hu	6.25 - 200	< 2 pg/mL	ab46041
IL6	Hu	1.56 - 50	< 0.8 pg/mL	ab46044

### ELISA Review - High Sensitivity Human IL6 ELISA Kit (ab46044)



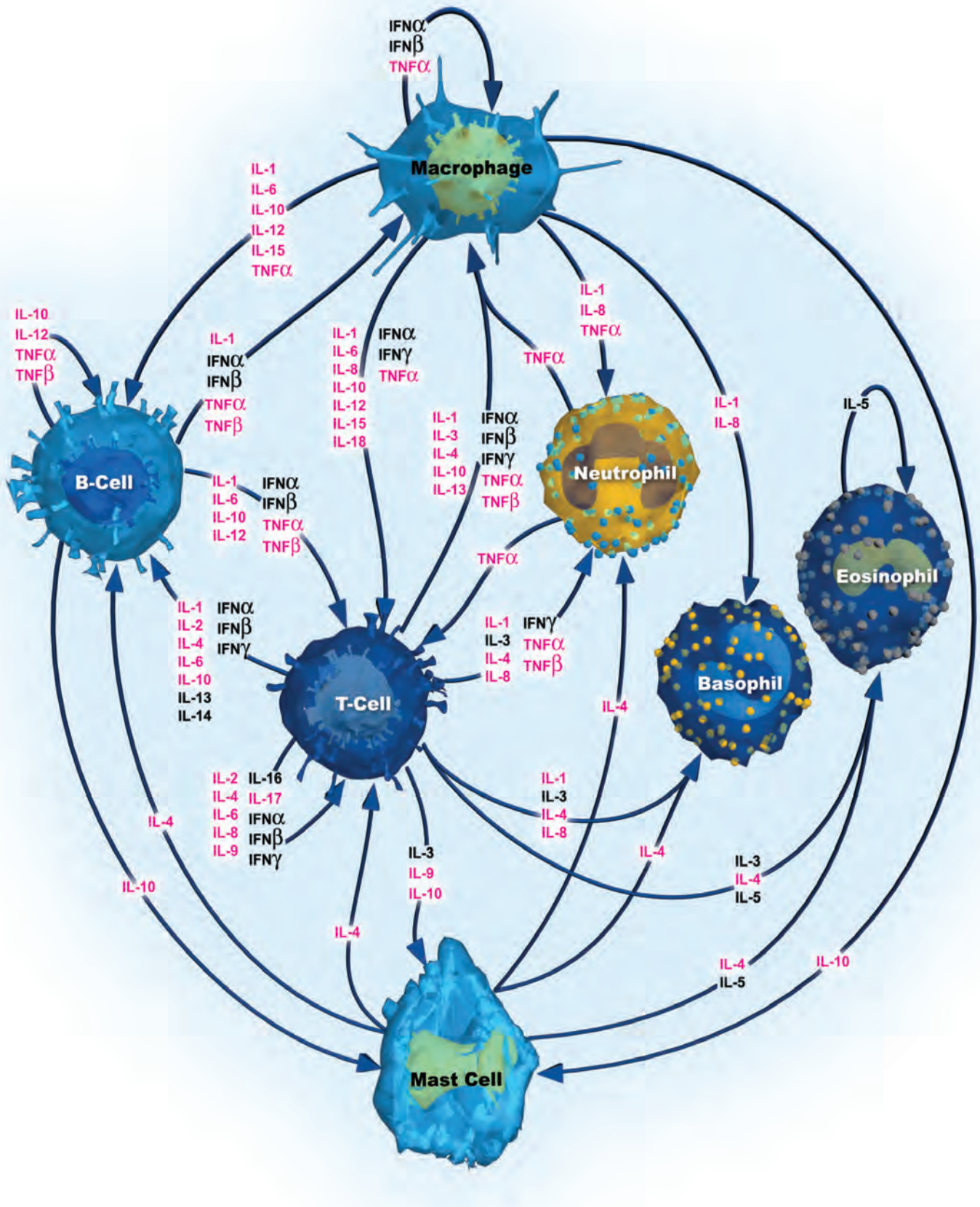
ELISA kit ab46044 was given a 'very good' customer rating recently. 🌟🌟🌟🌟

Sample: Human Cell (lung)  
 Specification: Lung  
 Amount of Sample: Growth media µg  
 Positive Control: Supplied with kit  
 Did you use the Abcam Kit protocol? Yes

Typical IL6 standard curve ranging from 1.56 to 50 pg/mL

IL6R	Hu	31.25 - 1000	< 5 pg/mL	ab46046
IL7	Hu	6.25 - 200	< 3 pg/mL	ab46047
IL8	Hu	62.5 - 2000	< 25 pg/mL	ab46049
IL10	Ms	31025 - 1000	< 20 pg/mL	ab46104
IL10	Hu	12.5 - 400	< 5 pg/mL	ab46057
IL10	Hu	1.56 - 50	< 1.30 pg/mL	ab46061
IL10	Hu	6.25 - 200	< 5.7 pg/mL	ab83702
IL12	Hu	6.25 - 200	< 3 pg/mL	ab46143
IL12B	Hu	62.5 - 2000	< 20 pg/mL	ab46064
IL13	Hu	3.12 - 100	< 1.5 pg/mL	ab46065
IL13R alpha2	Hu	156 - 5000	< 150 pg/mL	ab46112
IL17	Hu	3.12 - 100	< 3 pg/mL	ab83692
IL23	Hu	5000 - 156.25	< 20 pg/mL	ab64709
IL27	Hu	31.25 - 1000	< 12.8 pg / mL	ab83698
IFN gamma	Ms	31.25 - 1000	< 15 pg/mL	ab46121
IFN gamma	Hu	0.78 - 25	< 0.69 pg/mL	ab46050
IFN gamma	Hu	12.5 - 400	< 5 pg/mL	ab46045
IFN gamma	Rat	31.25 - 1000	< 10 pg/mL	ab46072

# Pathway | Cytokine Proteins



Cytokine Proteins Pathway

## Contact details

---

Order online at [www.abcam.com](http://www.abcam.com) and get Abpoints®!

### Abcam in the USA

1 Kendall Square, Ste B2304  
Cambridge, MA 02139-1517  
USA  
Tel: 1-(617)-225-2272  
Toll free: 1-888-77-ABCAM  
Fax: 1-(866)-739-9884

E-mail: [us.orders@abcam.com](mailto:us.orders@abcam.com)

### Abcam in Japan

1-16-8 Nihonbashi Kakigaracho,  
Chuo-ku  
Tokyo 103-0014  
Japan

Tel: +81-(0)3-6231-0940  
Fax: +81-(0)3-6231-0941

E-mail: [orders@abcam.co.jp](mailto:orders@abcam.co.jp)  
Web: [www.abcam.co.jp](http://www.abcam.co.jp)

Technical Support: [www.abcam.com/technical](http://www.abcam.com/technical)

### Abcam in Europe

330 Cambridge Science Park  
Milton Road  
Cambridge  
CB4 0FL  
UK  
Tel: +44-(0)1223-696000  
Fax: +44-(0)1223-771600

E-mail: [orders@abcam.com](mailto:orders@abcam.com)

### Abcam in Hong Kong

Abcam (Hong Kong) Ltd.  
Unit 225A & 225B, 2/F Core Building 2,  
No. 1 Science Park West Avenue  
Hong Kong Science Park, Shatin, N.T.  
Hong Kong

Tel: (852) 2603-6823  
Fax: (852) 3016-1888

Email: [hk.orders@abcam.com](mailto:hk.orders@abcam.com)  
Web: [www.abcam.cn](http://www.abcam.cn)

## Regional contacts

---

### Abcam (French)

24 rue Louis Blanc  
75010 PARIS  
FRANCE  
Phone: 01.46.94.62.96  
Fax: 01.53.01.45.47

### Abcam (German)

Phone: 030 896 779 154  
Fax 0800 664 8480

### Abcam (Austrian)

Phone: 019 288 259  
Fax: 019 288 258

### Abcam (Swiss)

Phone (Deutsch): 0435 016 424  
Phone (Français): 0615 000 530  
Fax: 0443 553 708

### Abcam (Spain)

Phone: 0911 146 554  
Fax: 0911 146 555

# Local offices and distributors

## 1. Argentina

### Migliore Laclaustra S.R.L.

Cordoba Avenue, 1470  
6 floor/room 12  
(1055) Bueno Aires  
Email: info@migliorelaclaustra.com.ar  
Phone: +11 4372 9045  
Fax: +11 4373 8052

## 2. Australia & New Zealand

### Sapphire Bioscience Pty. Ltd.

Suite 1  
134 Redfern Street  
Redfern, NSW 2016  
Email: sales@sapphirebioscience.com  
Phone: +61 2 9698 2022  
Fax: +61 2 9698 1022  
Web: www.sapphirebioscience.com

## 3. Brazil

### Sellex (SAC)

Rua Arandu, 205/1105  
04562-030,  
Sao Paulo, SP  
Email: vendas@sellex.com  
Phone: +11 05 506 4646  
Fax: +11 05 506 7433  
Web: www.sellex.com

## 4. Chile

### Biosonda S.A.

Alcalde Eduardo Castillo  
Velasco 2902  
Santiago  
7750269  
Email: ventas@biosonda.cl  
Phone: +56 22096770  
Fax: +56 2745462  
Web: www.biosonda.cl

## 5. Egypt

### KEMET Medical

14a El Emam Aly St  
Off Orouba St - Ismailia Square  
Heliopolis 11341, Cairo  
Email: mrashidy@kemet.com.eg  
Phone: +20 226 903 127  
Fax: +20 226 903 126  
Web: www.kemet.com.eg

## 6. India (Central)

### Allied Scientific Products

39/19B Gopal Nagar Road  
Kolkata,  
700027  
Email: alliedscientific@vsnl.com  
Phone: +91 33 2479 9039 // 3109  
Fax: +91 33 2479 0626  
Web: www.alliedscientific.net

## 6. India (South)

### NuLife Cons & Distr. (Pvt.) LTD.

M-52, 1st Floor,  
Lajpat Nagar Part-II  
New Delhi, 110024  
Email: nulife@bol.net.in  
Phone: +91 981 107 556  
Fax: +91 11 46586216  
Web: www.nulife.in

## 7. Israel

### Zotal Ltd

4 Habarzel St.  
Tel Aviv  
69710  
Email: sales@zotal.co.il  
Phone: +972 3 6492444  
Fax: +972 3 6496664  
Web: www.zotal.co.il

## 8. Korea, Republic of

### Dawinbio Inc.

302 Doorim B/D, 49-4, Bangi-Dong  
Songpa-Gu, Seoul, 138-050  
Email: dawinbio@dawinbio.com  
Phone: +82 2 422 4915  
Fax: +82 2 422 4916  
Web: www.dawinbio.com

## 9. Malaysia

### Bita Lifescience Sdn Bhd

C-23-05, Dataran 32  
No. 2, Jalan 19/1  
46300 Petaling Jaya  
Selangor D.E.  
Malaysia  
Email: Info@bitalifesc.com.my  
Phone: +603-79608286  
Fax: +603-79608262  
Web: www.bitalifesc.com.my

## 10. Mexico

### CTR Scientific

Ave Lincoln Pte 3410  
Col Mitras Nte Monterrey N.L.  
Monterrey, 64320  
Email: ctrscientific@ctr.com.mx  
Phone: +52 (81) 8158 0600  
Fax: +52 (81) 8373 2891  
Web: www.ctr.com.mx

## 11. Pakistan

### Friends Scientific Corporation

3-B Ali Continental,  
1-Mozang Road  
Lahore, 54000  
Email: friends1@wol.net.pk  
Phone: +92 427 236 176  
Fax: +92 427 321 500

## 12. Russian Federation

### ALMABION Ltd

ul. Vladimira Nevskogo d.59, k.166  
Voronezh, 394005  
Email: info@almabion.ru  
Phone: +7 4732 734828  
Fax: +7 4732 734828  
Web: www.almabion.ru

## 13. South Africa

### Biocom Biotech

Clubview Forum, Ground Floor G1  
Columbia str 58  
Clubview, 0157  
Email: info@biocombiotech.co.za  
Phone: +27 12 654 4614  
Fax: +27 86 654 9048  
Web: www.biocombiotech.co.za

## 14. Taiwan

### Interlab Co., Ltd

4F, No.149-17, Sec.2  
Keelung Road  
Taipei, Taiwan, 110, R.O.C  
Email: service@interlab.com.tw  
Phone: +886 2 2736 7100  
Toll free phone: 0800 088 700  
Fax: +886 2 2735 9807  
Web: www.interlab.com.tw

## 15. Thailand

### Biomed Diagnostics (Thailand) Co.,Ltd.

96/38 Moo6 Bangkraui-Sainoi Rd  
Bangkraui, Nontaburi, 11130  
Email: nan@biomedthai.com  
Phone: +66 2 879 6026  
Fax: +66 2 879 6065  
Web: www.biomedthai.com



## Required information for ordering

---

### Ordering online

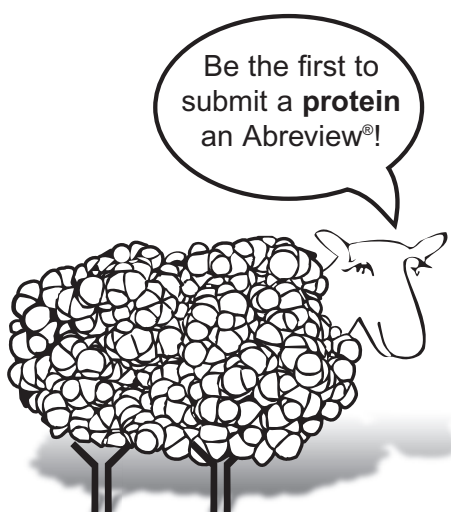
- Shipping address and billing address.
- Purchase order number\* or credit card details.
- Your telephone number (so that we, or our delivery company, can phone you if there is a query).
- Your VAT number, if you are in the European Union. If you are in the UK and are VAT exempt, you will need to fax your exemption certificate.

\* A purchase order number is a unique order reference number that your purchasing department will issue.

### Ordering offline - Extra details

If you are not placing your order online then please also specify the following:

- Product code(s) of the item(s) you require (e.g. ab1).
- Your email address and/or fax number (so that we can confirm the details of the products you have ordered and our team can keep you continuously informed of the planned delivery date of your products).





# Abcam's Terms and Conditions

---

In these Terms and Conditions 'Abcam' shall mean Abcam Limited, 330 Science Park, Cambridge CB4 0FL, United Kingdom. The Terms and Conditions set out below shall apply to Abcam branded products and services and to products distributed by Abcam on behalf of other suppliers.

## Ordering details

All orders are subject to availability. Prices of products do not include freight and packing, VAT or import duties where these are applicable.

Price and other information provided is subject to change without notice, and prices may be changed up to the time of delivery. While every effort is made to keep information provided by Abcam up to date, Abcam will not be liable to you or anyone else if errors should occur in information provided on this website.

When your order is received Abcam will confirm receipt. However, formal acceptance of the order will only take place when the goods are despatched. If prices should be changed between the time of receipt of an order and despatch, Abcam will contact you in advance.

Invoices should be paid no later than 30 days after the invoice date, and customers must themselves pay any bank charges that are incurred in making the payment. Full payment instructions are set out on the invoice.

## Receipt of products

Packaging and products should be inspected immediately upon receipt. Notification of damage, shortages or defects should be given immediately by e-mail, fax or phone.

## Return & replacement policy

Quality is important to Abcam. If a product does not perform as described on the datasheet notify us within 90 days of delivery and our dedicated team of scientific experts will examine details of your protocol to determine whether the problem is protocol related or product related:

- For protocol-related problems, our experts will give you independent professional advice.
- For product-related problems, a replacement or refund will be offered.
- If you do not provide details of your protocol or follow the recommendations of our experts, Abcam will not issue a replacement or refund.

If items are ordered incorrectly by the customer Abcam will consider taking them back. This will normally be subject to a 20% restocking charge on the items plus any shipping, handling & packaging costs. Requests for returns must have prior authorization (contact [returns@abcam.com](mailto:returns@abcam.com)) and must be made within 7 days of receipt of the items. Items must be returned in the same or equivalent packaging (i.e. cold and insulated) as originally despatched by Abcam.

## Product use limitations

All Abcam products are "FOR RESEARCH USE ONLY AND ARE NOT INTENDED FOR DIAGNOSTIC, THERAPEUTIC OR ANY *IN VIVO* USE IN HUMAN SUBJECTS"

Abcam will not be liable for any claims or applications not listed in the literature or the misuse of products. Abcam cannot provide a guarantee for all applications for which a specific reagent may be used. Further, information disclosed in Abcam product literature should not be considered as a recommendation to use its products in violation of any patents.

Abcam shall not be liable for its failure to perform any of its obligations resulting from circumstances beyond its reasonable control. Abcam will notify its customers as soon as practically possible after it becomes aware of deficiencies in a product supplied. Any claim relating to products shall be limited to replacement or refund of original purchase price paid.

Except for personal injury or death (for which no limit applies), Abcam will not be liable (under contract, by negligence or any other way) for any indirect or consequential loss or damage arising out of or in connection with the products or this Agreement and Abcam's total aggregate liability for any loss or damage in respect of the products or this Agreement will not exceed the amount paid for the products.

## General

Contracts and agreements with Abcam shall in all respects be governed by and interpreted in accordance with English law.

All information correct at time of printing.

**Customer Service Tel: Europe** +44-(0)1223-696000 | **Hong Kong** (852)-3793-3454  
**Japan** +81-(0)-3-6805-8450 | **U.S.A.** 1-617-225-2272 (Toll free: 1-888-77-ABCAM)



**Abcam in the USA**

Abcam Inc  
1 Kendall Square, Ste B2304  
Cambridge  
MA 02139-1517  
USA

Tel: +1-617-225-2272  
Toll free: +1-888-77-ABCAM  
Fax: +1-866-739-9884

**Abcam in Europe**

Abcam plc  
330 Cambridge Science Park  
Milton Road  
Cambridge  
CB4 0FL  
UK

Tel: +44-(0)1223-696000  
Fax: +44-(0)1223-771600

**Abcam in Japan**

Abcam KK  
1-16-8 Nihonbashi  
Kakigaracho,  
Chuo-ku  
Tokyo 103-0014  
Japan

Tel: +81-(0)3-6231-0940  
Fax: +81-(0)3-6231-0941

**Abcam in Hong Kong**

Abcam (Hong Kong) Ltd  
Unit 225A & 225B, 2/F  
Core Building 2  
1 Science Park West Avenue  
Hong Kong Science Park  
Hong Kong

Tel: (852)-2603-6823  
Fax: (852)-3016-1888