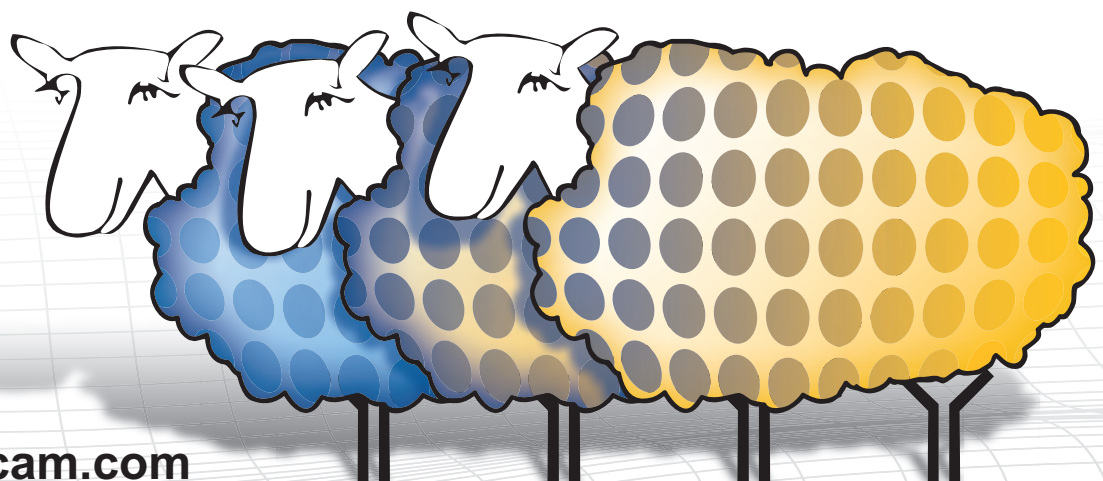


Enzyme Immunoassay Products
ELISA, ELIPAIR, ELISPOT
and FLUOROSPOT



Contents

Welcome to Abcam

- About Abcam1
- Abreviews® and Abpoints®2

Product list

- ELISA Kits4
- ELIPAIR Kits14
- ELISPOT Kits18
- FLUOROSPOT Kits23
- SECONDARY ANTIBODIES24
- PROTEINS29
- ABBREVIATIONS39

Ordering and contact details

- Required information for ordering40
- Abcam's terms and conditions41

Welcome to Abcam

About Abcam



Abcam, with offices in Cambridge, U.K., Cambridge, MA, U.S.A., Tokyo, Japan and Hong Kong was founded in 1998 by Dr. Jonathan Milner, then a researcher at Cambridge University, U.K.

“Like many life science researchers, I was frustrated by the time it took to locate and select antibodies essential for my research. This was largely due to poor information and out-of-date catalogs from the vast range of suppliers who were spread across many countries. In some cases, I also experienced difficulties with companies whose products were unreliable and whose customer service was slow and unhelpful. My vision was to build a company that offered reliable cutting-edge products and great customer service.”

It was a tough vision - Abcam was created to sell the best antibodies in the world with the most comprehensive, honest and up-to-date datasheets, fast delivery, helpful customer service and comprehensive technical support. Abcam also offers an ever expanding portfolio of ELISA kits.

Several years on and with thousands of products across our range, Abcam ships to scientists in over 70 countries around the world. Abcam is committed to the following fundamental principles that have seen us become the first choice for thousands of life scientists throughout industry and academia:

- Quality of products and datasheets
- Helpful technical support and online technical resources
- Friendly customer service
- Fast delivery

Comprehensive

We have a policy of honesty - our customers know everything that we know about our products, as soon as we know it. Everything we know about each product is posted on the datasheet. To achieve exceptional levels of quality for our customers we provide:

- Comprehensive datasheets
- Customers' Abreviews® of our products
- Product-specific protocols used by our customers
- Customers' technical questions and our answers for each product
- Product information and new products updated daily

Helpful

Our Scientific Support and Customer Service departments are full of scientists that have many years of experience working with the types of products that we supply to our customers.

We provide continuous order progress updates, so that you always know what is happening with your order and when you should expect to receive it.



Welcome to Abcam

Abreviews®

Why review?

We are building an online resource of the best antibodies in the world and value both positive and negative feedback about how our antibodies are performing in your hands. Abreviews tell us what we need to work on and what we're already doing well! It also allows other scientists to find out how well a product is likely to work for them before making a purchase. This up-to-date information often provides useful data about new applications, optimal dilution conditions and images of our products at work. What information do we need?

Submit an Abreview now at: www.abcam.com/abreviews

Abpoints for every Abreview®

We can offer from 50 up to 120 Abpoints based on submission time and type of application. The less characterized the product you review, the more Abpoints you will receive:

Time since last Abreview® (for antibody/application combination)	Abpoints® earned
< 3 months	50
3 - 6 months	60
6 - 12 months	75
> 12 months	90
Product not yet reviewed	120

If you submit an image as well you will earn an extra 100 Abpoints! These can then be claimed back as rewards.

Find out more about Abpoints at: www.abcam.com/abpoints

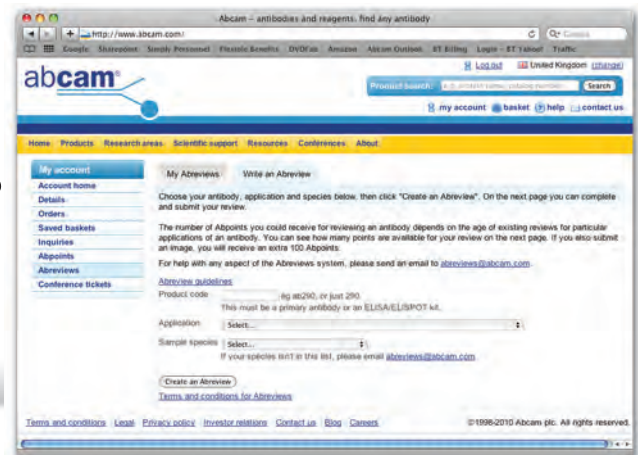
How do I submit an Abreview®?

On the datasheet for the antibody go to the 'Abreviews' tab and then follow the link to 'Submit an Abreview'. Then all you need to do is select the application and sample species (remember - you can submit feedback for each application you have used and get 50 Abpoints for each one). Furthermore, you get 100 extra Abpoints for submitting an image!

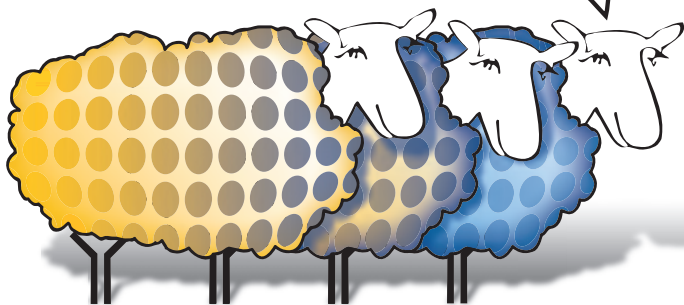
After that you simply need to work through the form we have set out. We hope that this will make the whole process as easy as possible for you and also provide us with the maximum amount of information for scientists reading the Abreview.

Short of time?

One new feature of Abreviews is that you can save the Abreview at any point and then return to complete it later. You can access all of your uncompleted Abreviews in the 'Your Account' section of our website.



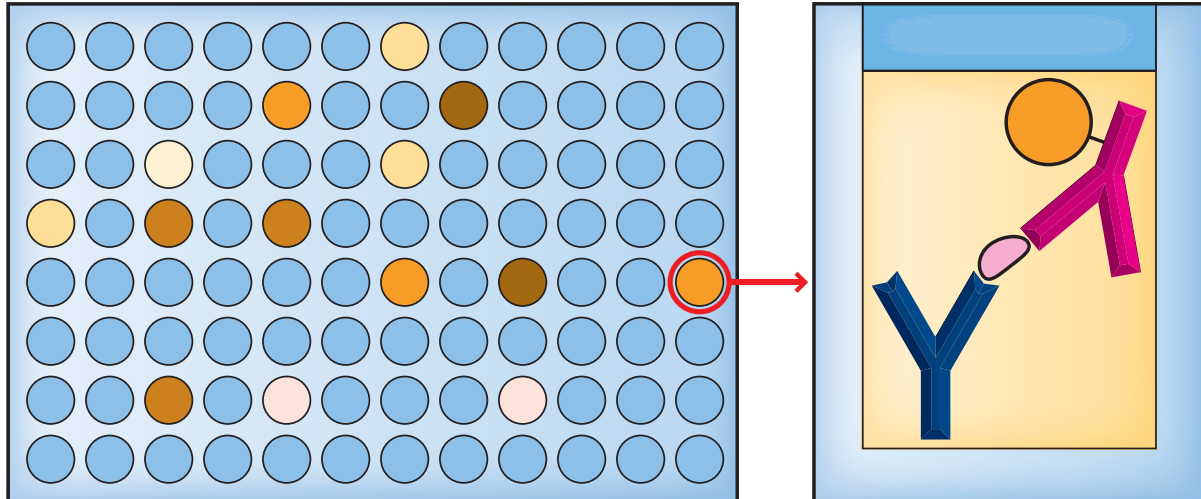
Be the first to submit an ELISA Abreview!



ELISA

Standard ELISA and High Sensitivity ELISA kits

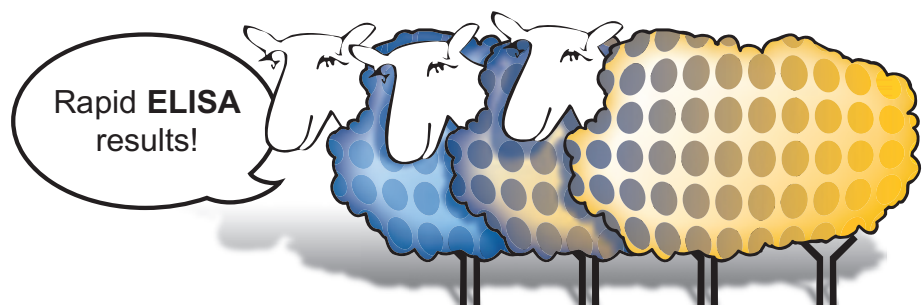
Determine antigen concentration in unknown samples using our solid phase 'sandwich' format ELISA.



Want to detect low levels of protein in your sample? - High Sensitivity ELISA kits are available which are 10 times more sensitive than standard ELISA (<1 pg/mL).

- Kits against human, mouse, rat and monkey targets
- Our standard ELISA kits provide you with rapid results with an assay time on average of 2 hours per kit
- Compatible with serum, plasma and cell supernatant analysis
- Specificity against both native and recombinant antigens
- Formats of 96 well plate kit packs containing 5, 10, 15 and 20 plates

Kits include: Pre-coated 96 well plates, protein standards, control protein (recombinant, lysates or serum), biotinylated detection antibody, streptavidin - HRP, chromogen - TMB, stop reagent (H_2SO_4), dilution buffers and wash buffers.



ELISA kits

Target	Reacts with	Range	Sensitivity	Number of plates	Catalog # www.abcam.com/...
Adiponectin	Hu	24.69 pg/mL - 18000 pg/mL	< 25 pg/mL	1 x 96 well plate	ab99968
Amphiregulin	Hu	16.46 pg/mL - 4000 pg/mL	< 10 pg/mL	1 x 96 well plate	ab99975
Amphiregulin	Ms	1.1 pg/mL - 800 pg/mL	< 2 pg/mL	1 x 96 well plate	ab100668
Angiogenin	Hu	1.64 pg/mL - 400 pg/mL	< 1.5 pg/mL	1 x 96 well plate	ab99970
Angiopoietin 1	Hu	74.07 pg/mL - 18000 pg/mL	< 30 pg/mL	1 x 96 well plate	ab99972
Angiopoietin 2	Hu	4.12 pg/mL - 3000 pg/mL	< 10 pg/mL	1 x 96 well plate	ab99971
Angiostatin	Hu	31.25 ng/mL - 2000 ng/mL	< 20 pg/mL	1 x 96 well plate	ab99973
ARP4	Hu	27.4 pg/mL - 20000 pg/mL	< 20 pg/mL	1 x 96 well plate	ab99974
Axl	Hu	2.74 pg/mL - 2000 pg/mL	< 2 pg/mL	1 x 96 well plate	ab99976
Axl	Ms	1 pg/mL - 250 pg/mL	< 1 pg/mL	1 x 96 well plate	ab100669
BCA1	Hu	1.37 pg/mL - 1000 pg/mL	< 1.5 pg/mL	1 x 96 well plate	ab99981
BCA1	Ms	1.37 pg/mL - 1000 pg/mL	< 2 pg/mL	1 x 96 well plate	ab100671
BDNF	Hu	0.066 ng/mL - 16 ng/mL	< 80 pg/mL	1 x 96 well plate	ab99978
Betacellulin	Hu	24.69 pg/mL - 18000 pg/mL	< 30 pg/mL	1 x 96 well plate	ab99987
BMP4	Hu	8.23 pg/mL - 6000 pg/mL	< 15 pg/mL	1 x 96 well plate	ab99982
BMP4	Hu	8.23 pg/mL - 6000 pg/mL	< 15 pg/mL	1 x 96 well plate	ab99983
BMP6	Hu	204.8 pg/mL - 20000 pg/mL	< 150 pg/mL	1 x 96 well plate	ab99984
BMP7	Hu	8.23 pg/mL - 6000 pg/mL	< 10 pg/mL	1 x 96 well plate	ab99985
c-Kit	Hu	0.312 ng/mL - 10 ng/mL	< 0.095 ng/mL	1 x 96 well plate	ab45924
c-Kit	Hu	0.312 ng/mL - 10 ng/mL	< 0.095 ng/mL	2 x 96 well plates	ab46505
C Reactive Protein	Hu	-	-	1 x 96 well plate	ab99995
Calcitonin	Hu	27.43 pg/mL - 20000 pg/mL	< 30 pg/mL	1 x 96 well plate	ab100630
Carcino Embryonic Antigen CEA	Hu	0.343 ng/mL - 250 ng/mL	< 0.2 ng/mL	1 x 96 well plate	ab99992
Cardiotrophin 1	Hu	16.46 pg/mL - 12000 pg/mL	< 20 pg/mL	1 x 96 well plate	ab99996
CCL27	Ms	24.69 pg/mL - 18000 pg/mL	< 15 pg/mL	1 x 96 well plate	ab100676
CCL28	Hu	27.4 pg/mL - 20000 pg/mL	< 25 pg/mL	1 x 96 well plate	ab99988
CD14	Hu	6.8 ng/mL - 220 ng/mL	< 6 ng/mL	2 x 96 well plates	ab45523
CD14	Hu	6.8 ng/mL - 220 ng/mL	< 6 ng/mL	1 x 96 well plate	ab46541
CD14	Hu	8.23 pg/mL - 6000 pg/mL	< 6 pg/mL	1 x 96 well plate	ab99989
CD21	Hu	3.12 U/mL - 100 U/mL	< 3 U/mL	1 x 96 well plate	ab45908
CD21	Hu	3.12 U/mL - 100 U/mL	< 3 U/mL	2 x 96 well plates	ab45909
CD31	Hu	8.23 pg/mL - 6000 pg/mL	< 15 pg/mL	1 x 96 well plate	ab100627
CD31	Hu	0.31 ng/mL - 10 ng/mL	< 0.17 ng/mL	1 x 96 well plate	ab45910
CD31	Hu	0.31 ng/mL - 10 ng/mL	< 0.17 ng/mL	2 x 96 well plates	ab45911
CD36	Ms	27.43 pg/mL - 20000 pg/mL	< 30 pg/mL	1 x 96 well plate	ab100673
CD40	Hu	54.87 pg/mL - 40000 pg/mL	< 50 pg/mL	1 x 96 well plate	ab99990
CD40	Ms	2.06 pg/mL - 1500 pg/mL	< 3 pg/mL	1 x 96 well plate	ab100674
CD40L	Hu	8.23 pg/mL - 6000 pg/mL	< 6 pg/mL	1 x 96 well plate	ab99991
CD44	Hu	0.31 ng/mL - 10 ng/mL	< 0.13 ng/mL	1 x 96 well plate	ab45912
CD44	Hu	0.31 ng/mL - 10 ng/mL	< 0.13 ng/mL	2 x 96 well plates	ab45913
CD62E	Hu	1 ng/mL - 32 ng/mL	< 0.5 ng/mL	1 x 96 well plate	ab45914
CD62E	Hu	1 ng/mL - 32 ng/mL	< 0.5 ng/mL	2 x 96 well plates	ab45915
CD62E	Hu	24.69 pg/mL - 18000 pg/mL	< 30 pg/mL	1 x 96 well plate	ab100512
CD62L	Hu	1.6 ng/mL - 60 ng/mL	< 1 ng/mL	1 x 96 well plate	ab45917
CD62L	Hu	1.6 ng/mL - 60 ng/mL	< 1 ng/mL	2 x 96 well plates	ab45919
CD62L	Rat	8.23 pg/mL - 6000 pg/mL	< 6 pg/mL	1 x 96 well plate	ab100776
CD62P	Hu	0.041 ng/mL - 30 ng/mL	< 20 pg/mL	1 x 96 well plate	ab100631
CD62P	Ms	8.23 pg/mL - 6000 pg/mL	< 8 pg/mL	1 x 96 well plate	ab100737
CD86	Hu	1.187 U/mL - 38 U/mL	< 0.7 U/mL	1 x 96 well plate	ab45920
CD86	Hu	1.187 U/mL - 38 U/mL	< 0.7 U/mL	2 x 96 well plates	ab45921
CD95	Hu	93.75 pg/mL - 3000 pg/mL	< 47 pg/mL	1 x 96 well plate	ab45922
CD95	Hu	93.75 pg/mL - 3000 pg/mL	< 47 pg/mL	2 x 96 well plates	ab45923
CD95	Hu	2.74 pg/mL - 2000 pg/mL	< 5 pg/mL	1 x 96 well plate	ab100513
CD95	Hu	2.74 pg/mL - 2000 pg/mL	< 5 pg/mL	1 x 96 well plate	ab100514
CD105	Hu	4.12 pg/mL - 3000 pg/mL	< 10 pg/mL	1 x 96 well plate	ab100507
CD130 (gp130)	Hu	56.25 pg/mL - 1800 pg/mL	< 15 pg/mL	1 x 96 well plate	ab46135
CD130 (gp130)	Hu	56.25 pg/mL - 1800 pg/mL	< 15 pg/mL	2 x 96 well plates	ab46144

ELISA kits

Target	Reacts with	Range	Sensitivity	Number of plates	Catalog # www.abcam.com/...
CD153	Ms	0.41 pg/mL - 100 pg/mL	< 1 pg/mL	1 x 96 well plate	ab100672
CEACAM1	Hu	20.58 pg/mL - 15000 pg/mL	< 20 pg/mL	1 x 96 well plate	ab99993
CNTF	Hu	0.2469 ng/mL - 60 ng/mL	< 0.2 ng/mL	1 x 96 well plate	ab99994
CNTF	Rat	8.23 pg/mL - 2000 pg/mL	< 10 pg/mL	1 x 96 well plate	ab100758
CX3CL1	Hu	0.2469 ng/mL - 60 ng/mL	< 300 pg/mL	1 x 96 well plate	ab100522
CX3CL1	Ms	0.274 ng/mL - 200 ng/mL	< 0.3 ng/mL	1 x 96 well plate	ab100683
CX3CL1	Rat	2.74 pg/mL - 2000 pg/mL	< 5 pg/mL	1 x 96 well plate	ab100760
CX3CL1	Rat	2.74 pg/mL - 2000 pg/mL	< 5 pg/mL	1 x 96 well plate	ab100761
CXCL2	Ms	2.74 pg/mL - 2000 pg/mL	< 10 pg/mL	1 x 96 well plate	ab100727
CXCL5	Hu	24.69 pg/mL - 18000 pg/mL	< 10 pg/mL	1 x 96 well plate	ab100506
CXCL5	Ms	8.23 pg/mL - 2000 pg/mL	< 6 pg/mL	1 x 96 well plate	ab100719
CXCL5	Rat	24.69 pg/mL - 6000 pg/mL	< 20 pg/mL	1 x 96 well plate	ab100774
CXCL5	Rat	8.23 pg/mL - 6000 pg/mL	< 15 pg/mL	1 x 96 well plate	ab100775
CXCL7	Hu	4.1 pg/mL - 4000 pg/mL	< 8.5 pg/mL	1 x 96 well plate	ab100613
CXCL7	Ms	10.97 pg/mL - 8000 pg/mL	< 14 pg/mL	1 x 96 well plate	ab100742
CXCL7	Rat	68.59 pg/mL - 50000 pg/mL	< 80 pg/mL	1 x 96 well plate	ab100781
CXCL11	Hu	2.5 pg/mL - 600 pg/mL	< 2 pg/mL	1 x 96 well plate	ab100580
CXCL11	Ms	5.487 pg/mL - 4000 pg/mL	< 6 pg/mL	1 x 96 well plate	ab100716
CXCL16	Ms	1.25 pg/mL - 80 pg/mL	< 1.3 pg/mL	1 x 96 well plate	ab100677
DcR1	Hu	31.25 pg/mL - 1000 pg/mL	< 147 pg/mL	1 x 96 well plate	ab46016
DcR1	Hu	31.25 pg/mL - 1000 pg/mL	< 147 pg/mL	2 x 96 well plates	ab46018
DcR2	Hu	5.487 pg/mL - 4000 pg/mL	< 10 pg/mL	1 x 96 well plate	ab100657
DcR2	Hu	31.25 pg/mL - 1000 pg/mL	< 64 pg/mL	1 x 96 well plate	ab46017
DcR2	Hu	31.25 pg/mL - 1000 pg/mL	< 64 pg/mL	2 x 96 well plates	ab46023
Decorin	Hu	0.96 pg/mL - 700 pg/mL	< 1.5 pg/mL	1 x 96 well plate	ab99998
DKK1	Hu	1.92 pg/mL - 30000 pg/mL	< 1 pg/mL	1 x 96 well plate	ab100501
DKK3	Hu	2.74 pg/mL - 2000 pg/mL	< 3 pg/mL	1 x 96 well plate	ab100502
DKK4	Hu	13.72 pg/mL - 10000 pg/mL	< 10 pg/mL	1 x 96 well plate	ab100503
DR4	Hu	31.25 pg/mL - 1000 pg/mL	< 8 pg/mL	1 x 96 well plate	ab46510
DR4	Hu	31.25 pg/mL - 1000 pg/mL	< 8 pg/mL	2 x 96 well plates	ab46511
DR5	Hu	31.25 pg/mL - 1000 pg/mL	< 6 pg/mL	1 x 96 well plate	ab46013
DR5	Hu	31.25 pg/mL - 1000 pg/mL	< 6 pg/mL	2 x 96 well plates	ab46014
E Cadherin	Ms	4.12 pg/mL - 3000 pg/mL	< 6 pg/mL	1 x 96 well plate	ab100678
EGF	Hu	0.82 pg/mL - 200 pg/mL	< 1 pg/mL	1 x 96 well plate	ab100504
EGF	Ms	3.29 pg/mL - 800 pg/mL	< 3 pg/mL	1 x 96 well plate	ab100679
EGFR	Hu	2.74 pg/mL - 2000 pg/mL	< 4 pg/mL	1 x 96 well plate	ab100505
Elafin/Skalp	Hu	6.86 pg/mL - 5000 pg/mL	< 5 pg/mL	1 x 96 well plate	ab100658
Endostatin	Hu	13.7 pg/mL - 10000 pg/mL	< 10 pg/mL	1 x 96 well plate	ab100508
Eotaxin	Ms	1.02 pg/mL - 100 pg/mL	< 1 pg/mL	1 x 96 well plate	ab100680
Eotaxin 2	Hu	1.37 pg/mL - 1000 pg/mL	< 2 pg/mL	1 x 96 well plate	ab100509
Eotaxin 2	Ms	2.46 pg/mL - 600 pg/mL	< 4 pg/mL	1 x 96 well plate	ab100681
Epiregulin	Ms	8.23 pg/mL - 6000 pg/mL	< 10 pg/mL	1 x 96 well plate	ab100682
ErbB 2	Hu	8.19 pg/mL - 2000 pg/mL	< 8 pg/mL	1 x 96 well plate	ab100510
ErbB3	Hu	3.43 pg/mL - 2500 pg/mL	< 4 pg/mL	1 x 96 well plate	ab100511
Exodus 2	Ms	31.25 pg/mL - 1000 pg/mL	< 20 pg/mL	1 x 96 well plate	ab100667
Factor D	Hu	8.23 pg/mL - 6000 pg/mL	< 4 pg/mL	1 x 96 well plate	ab99969
Fas Ligand	Hu	62.5 pg/mL - 2000 pg/mL	< 44 pg/mL	1 x 96 well plate	ab45892
Fas Ligand	Hu	62.5 pg/mL - 2000 pg/mL	< 44 pg/mL	2 x 96 well plates	ab45907
Fas Ligand	Hu	1.37 pg/mL - 1000 pg/mL	< 2 pg/mL	1 x 96 well plate	ab100515
Fas Ligand	Rat	82.3 pg/mL - 60000 pg/mL	< 90 pg/mL	1 x 96 well plate	ab100759
FGF basic	Hu	102.4 pg/mL - 10000 pg/mL	< 50 pg/mL	1 x 96 well plate	ab99979
FGF basic	Hu	102.4 pg/mL - 10000 pg/mL	< 50 pg/mL	1 x 96 well plate	ab99980
FGF basic	Ms	18.8 pg/mL - 600 pg/mL	< 8 pg/mL	1 x 96 well plate	ab100670
FGF4	Hu	24.69 pg/mL - 18000 pg/mL	< 50 pg/mL	1 x 96 well plate	ab100516
FGF4	Hu	24.69 pg/mL - 18000 pg/mL	< 50 pg/mL	1 x 96 well plate	ab100517
FGF6	Hu	8.23 pg/mL - 6000 pg/mL	< 6 pg/mL	1 x 96 well plate	ab100518
FGF7	Hu	0.55 pg/mL - 400 pg/mL	< 0.5 pg/mL	1 x 96 well plate	ab100519

Scientific support: www.abcam.com/technical | ELISA resources: www.abcam.com/elisa
 Species abbreviations key: **Hu**: Human | **Ms**: Mouse | **Mcq**: Macaque | **Mk**: Monkey | **Rt**: Rat

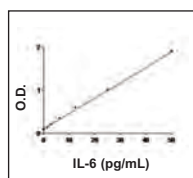
ELISA kits

Target	Reacts with	Range	Sensitivity	Number of plates	Catalog # www.abcam.com/...
FGF9	Hu	358.4 pg/mL - 35000 pg/mL	< 200 pg/mL	1 x 96 well plate	ab100520
Flt3 ligand	Hu	4.1 pg/mL - 400 pg/mL	< 1.5 pg/mL	1 x 96 well plate	ab100521
G-CSF	Hu	0.82 pg/mL - 600 pg/mL	< 1 pg/mL	1 x 96 well plate	ab100524
G-CSF	Ms	0.62 pg/mL - 150 pg/mL	< 0.5 pg/mL	1 x 96 well plate	ab100684
Galectin 7	Hu	13.72 pg/mL - 10000 pg/mL	< 20 pg/mL	1 x 96 well plate	ab100523
GDNF	Hu	2.74 pg/mL - 2000 pg/mL	< 4 pg/mL	1 x 96 well plate	ab100525
GM-CSF	Hu	2.05 pg/mL - 500 pg/mL	< 2 pg/mL	1 x 96 well plate	ab100529
GM-CSF	Ms	15.6 pg/mL - 500 pg/mL	< 9 pg/mL	1 x 96 well plate	ab46078
GM-CSF	Ms	15.6 pg/mL - 500 pg/mL	< 9 pg/mL	2 x 96 well plates	ab46119
GM-CSF	Ms	2.74 pg/mL - 2000 pg/mL	< 6 pg/mL	1 x 96 well plate	ab100685
GM-CSF	Rat	-	-	1 x 96 well plate	ab100762
GM-CSF Receptor alpha	Hu	31.25 pg/mL - 1000 pg/mL	< 16 pg/mL	1 x 96 well plate	ab46086
GM-CSF Receptor alpha	Hu	31.25 pg/mL - 1000 pg/mL	< 16 pg/mL	2 x 96 well plates	ab46094
Granzyme B	Hu	31.25 pg/mL - 1000 pg/mL	< 20 pg/mL	1 x 96 well plate	ab46142
Granzyme B	Hu	31.25 pg/mL - 1000 pg/mL	< 20 pg/mL	2 x 96 well plates	ab46133
GRO alpha	Hu	0.55 ng/mL - 400 ng/mL	< 50 pg/mL	1 x 96 well plate	ab100530
GRO alpha	Ms	0.614 pg/mL - 150 pg/mL	< 1 pg/mL	1 x 96 well plate	ab100717
hB EGF	Hu	16.38 pg/mL - 4000 pg/mL	< 20 pg/mL	1 x 96 well plate	ab100531
HCG	Hu	54.87 pg/mL - 40000 pg/mL	< 50 pg/mL	1 x 96 well plate	ab100533
HGF	Hu	2.74 pg/mL - 2000 pg/mL	< 3 pg/mL	1 x 96 well plate	ab100534
HGF	Hu	8.23 pg/mL - 6000 pg/mL	< 8 pg/mL	1 x 96 well plate	ab100535
HGF	Ms	0.25 ng/mL - 60 ng/mL	< 100 pg/mL	1 x 96 well plate	ab100686
HGF	Ms	0.25 ng/mL - 60 ng/mL	< 100 pg/mL	1 x 96 well plate	ab100687
Human Growth Hormone	Hu	2.5 pg/mL - 600 pg/mL	< 4 pg/mL	1 x 96 well plate	ab100526
I-309	Hu	4.12 pg/mL - 3000 pg/mL	< 4 pg/mL	1 x 96 well plate	ab100536
ICAM1	Hu	2.72 pg/mL - 2000 pg/mL	< 4 pg/mL	1 x 96 well plate	ab100640
ICAM1	Ms	24.69 pg/mL - 6000 pg/mL	< 20 pg/mL	1 x 96 well plate	ab100688
ICAM1	Rat	28.81 pg/mL - 7000 pg/mL	< 20 pg/mL	1 x 96 well plate	ab100763
ICAM2	Hu	0.75 U/mL - 24 U/mL	< 0.2 U/mL	1 x 96 well plate	ab46080
ICAM2	Hu	0.75 U/mL - 24 U/mL	< 0.2 U/mL	2 x 96 well plates	ab46082
ICAM3	Hu	0.62 ng/mL - 20 ng/mL	< 0.3 ng/mL	1 x 96 well plate	ab46024
ICAM3	Hu	0.62 ng/mL - 20 ng/mL	< 0.3 ng/mL	2 x 96 well plates	ab46043
IGF1	Hu	0.25 ng/mL - 60 ng/mL	< 0.2 ng/mL	1 x 96 well plate	ab100545
IGF1	Ms	2.74 pg/mL - 2000 pg/mL	< 4 pg/mL	1 x 96 well plate	ab100695
IGF1 Receptor	Hu	8.23 pg/mL - 6000 pg/mL	< 6 pg/mL	1 x 96 well plate	ab100546
IGF2	Ms	2.3 ng/mL - 150 ng/mL	< 1.5 ng/mL	1 x 96 well plate	ab100696
IGFBP1	Hu	2.74 pg/mL - 2000 pg/mL	< 5 pg/mL	1 x 96 well plate	ab100539
IGFBP2	Hu	8.23 pg/mL - 6000 pg/mL	< 20 pg/mL	1 x 96 well plate	ab100540
IGFBP2	Ms	0.823 ng/mL - 600 ng/mL	< 0.6 ng/mL	1 x 96 well plate	ab100691
IGFBP3	Hu	74.07 pg/mL - 18000 pg/mL	< 80 pg/mL	1 x 96 well plate	ab100541
IGFBP3	Ms	54.87 pg/mL - 40000 pg/mL	< 70 pg/mL	1 x 96 well plate	ab100692
IGFBP4	Hu	0.41 ng/mL - 100 ng/mL	< 0.25 ng/mL	1 x 96 well plate	ab100542
IGFBP5	Hu	1.1 ng/mL - 800 ng/mL	< 2 ng/mL	1 x 96 well plate	ab100543
IGFBP5	Ms	4.12 pg/mL - 3000 pg/mL	< 5 pg/mL	1 x 96 well plate	ab100693
IGFBP6	Hu	82.3 pg/mL - 60000 pg/mL	< 150 pg/mL	1 x 96 well plate	ab100544
IGFBP6	Ms	8.23 pg/mL - 6000 pg/mL	< 6 pg/mL	1 x 96 well plate	ab100694
IgG	Hu	0.021 ng/mL - 15 ng/mL	< 150 pg/mL	1 x 96 well plate	ab100547
IgG1	Hu	0.05 ng/mL - 40 ng/mL	< 0.05 ng/mL	1 x 96 well plate	ab100548
IL1 alpha	Hu	31.2 pg/mL - 1000 pg/mL	< 10 pg/mL	1 x 96 well plate	ab46028
IL1 alpha	Hu	31.2 pg/mL - 1000 pg/mL	< 10 pg/mL	2 x 96 well plates	ab46051
IL1 alpha	Hu	0.82 pg/mL - 600 pg/mL	< 2 pg/mL	1 x 96 well plate	ab100560
IL1 alpha	Hu	0.82 pg/mL - 600 pg/mL	< 2 pg/mL	1 x 96 well plate	ab100561
IL1 beta	Ms	2.74 pg/mL - 2000 pg/mL	< 5 pg/mL	1 x 96 well plate	ab100705
IL1 beta	Hu	15.6 pg/mL - 500 pg/mL	< 5 pg/mL	1 x 96 well plate	ab46030
IL1 beta	Hu	15.6 pg/mL - 500 pg/mL	< 5 pg/mL	2 x 96 well plates	ab46052
IL1 beta	Hu	0.48 pg/mL - 100 pg/mL	< 0.3 pg/mL	1 x 96 well plate	ab100562
IL1 beta	Ms	2.74 pg/mL - 2000 pg/mL	< 5 pg/mL	1 x 96 well plate	ab100704

ELISA kits

Target	Reacts with	Range	Sensitivity	Number of plates	Catalog # www.abcam.com/...
IL1 beta	Pig	8.23 pg/mL - 6000 pg/mL	< 6 pg/mL	1 x 96 well plate	ab100754
IL1 beta	Rat	68.59 pg/mL - 50000 pg/mL	< 80 pg/mL	1 x 96 well plate	ab100767
IL1 beta	Rat	68.59 pg/mL - 50000 pg/mL	< 80 pg/mL	1 x 96 well plate	ab100768
IL1RA antagonist	Hu	0.124 ng/mL - 30 ng/mL	< 0.1 ng/mL	1 x 96 well plate	ab100564
IL1RA antagonist	Hu	0.124 ng/mL - 30 ng/mL	< 0.1 ng/mL	1 x 96 well plate	ab100565
IL2	Hu	31.2 pg/mL - 1000 pg/mL	< 10 pg/mL	1 x 96 well plate	ab46033
IL2	Hu	31.2 pg/mL - 1000 pg/mL	< 10 pg/mL	2 x 96 well plates	ab46053
IL2	Hu	1.87 pg/mL - 60 pg/mL	< 0.97 pg/mL	1 x 96 well plate	ab46054
IL2	Hu	1.87 pg/mL - 60 pg/mL	< 0.97 pg/mL	2 x 96 well plates	ab46055
IL2	Hu	2.07 pg/mL - 1500 pg/mL	< 4 pg/mL	1 x 96 well plate	ab100566
IL2	Ms	15.6 pg/mL - 500 pg/mL	< 5 pg/mL	1 x 96 well plate	ab46096
IL2	Ms	15.6 pg/mL - 500 pg/mL	< 5 pg/mL	2 x 96 well plates	ab46097
IL2	Ms	0.625 pg/mL - 40 pg/mL	< 1 pg/mL	1 x 96 well plate	ab100706
IL2	Rat	0.12 ng/mL - 30 ng/mL	< 0.1 ng/mL	1 x 96 well plate	ab100769
IL2 Receptor	Hu	68.75 pg/mL - 2220 pg/mL	< 8 pg/mL	1 x 96 well plate	ab46036
IL2 Receptor	Hu	68.75 pg/mL - 2220 pg/mL	< 8 pg/mL	2 x 96 well plates	ab46056
IL3	Hu	16.46 pg/mL - 12000 pg/mL	< 20 pg/mL	1 x 96 well plate	ab100569
IL4	Ms	0.819 pg/mL - 200 pg/mL	< 1 pg/mL	1 x 96 well plate	ab100710
IL4	Hu	1.1 pg/mL - 58 pg/mL	< 0.5 pg/mL	1 x 96 well plate	ab46058
IL4	Hu	1.1 pg/mL - 58 pg/mL	< 0.5 pg/mL	2 x 96 well plates	ab46060
IL4	Hu	0.31 pg/mL - 10 pg/mL	< 0.31 pg/mL	1 x 96 well plate	ab46063
IL4	Hu	0.31 pg/mL - 10 pg/mL	< 0.31 pg/mL	2 x 96 well plates	ab46021
IL4	Hu	3.13 pg/mL - 200 pg/mL	< 5 pg/mL	1 x 96 well plate	ab100570
IL4	Rat	31.25 pg/mL - 1000 pg/mL	< 15 pg/mL	1 x 96 well plate	ab46073
IL4	Rat	31.25 pg/mL - 1000 pg/mL	< 15 pg/mL	2 x 96 well plates	ab46071
IL4	Rat	0.66 pg/mL - 160 pg/mL	< 1.5 pg/mL	1 x 96 well plate	ab100770
IL4	Rat	0.66 pg/mL - 160 pg/mL	< 1.5 pg/mL	1 x 96 well plate	ab100771
IL4R	Hu	31.25 pg/mL - 1000 pg/mL	< 11.5 pg/mL	1 x 96 well plate	ab46022
IL4R	Hu	31.25 pg/mL - 1000 pg/mL	< 11.5 pg/mL	2 x 96 well plates	ab46039
IL5	Hu	7.8 pg/mL - 250 pg/mL	< 5 pg/mL	1 x 96 well plate	ab46026
IL5	Hu	7.8 pg/mL - 250 pg/mL	< 5 pg/mL	2 x 96 well plates	ab46040
IL5	Hu	2.74 pg/mL - 2000 pg/mL	< 5 pg/mL	1 x 96 well plate	ab100571
IL5	Ms	2.05 pg/mL - 500 pg/mL	< 1 pg/mL	1 x 96 well plate	ab100711
IL6	Hu	6.25 pg/mL - 200 pg/mL	< 2 pg/mL	1 x 96 well plate	ab46027
IL6	Hu	6.25 pg/mL - 200 pg/mL	< 2 pg/mL	2 x 96 well plates	ab46041
IL6	Hu	1.56 pg/mL - 50 pg/mL	< 0.8 pg/mL	1 x 96 well plate	ab46042
IL6	Hu	1.56 pg/mL - 50 pg/mL	< 0.8 pg/mL	2 x 96 well plates	ab46044

ELISA Review - High Sensitivity Human IL6 ELISA Kit (ab46044)



ELISA kit ab46044 was given a 'very good' customer rating recently. 🌟🌟🌟🌟

Sample: Human Cell (lung)
 Specification: Lung
 Amount of Sample: Growth media µg
 Positive Control: Supplied with kit
 Did you use the Abcam Kit protocol? Yes

Typical IL6 standard curve ranging from 1.56 to 50 pg/mL

IL6	Hu	1.37 pg/mL - 1000 pg/mL	< 3 pg/mL	1 x 96 well plate	ab100572
IL6	Hu	1.37 pg/mL - 1000 pg/mL	< 3 pg/mL	1 x 96 well plate	ab100573
IL6	Ms	15.6 pg/mL - 500 pg/mL	< 10 pg/mL	1 x 96 well plate	ab46100
IL6	Ms	15.6 pg/mL - 500 pg/mL	< 10 pg/mL	2 x 96 well plates	ab46102

Scientific support: www.abcam.com/technical | ELISA resources: www.abcam.com/elisa
 Species abbreviations key: **Hu**: Human | **Ms**: Mouse | **Mcq**: Macaque | **Mk**: Monkey | **Rt**: Rat

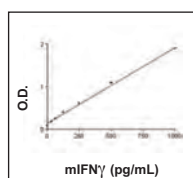
ELISA kits

Target	Reacts with	Range	Sensitivity	Number of plates	Catalog # www.abcam.com/...
IL6	Ms	0.82 pg/mL - 600 pg/mL	< 2 pg/mL	1 x 96 well plate	ab100712
IL6	Pig	2.74 pg/mL - 2000 pg/mL	< 4 pg/mL	1 x 96 well plate	ab100755
IL6	Rat	245.8 pg/mL - 60000 pg/mL	< 200 pg/mL	1 x 96 well plate	ab100772
IL6R	Hu	31.25 pg/mL - 1000 pg/mL	< 5 pg/mL	1 x 96 well plate	ab46029
IL6R	Hu	31.25 pg/mL - 1000 pg/mL	< 5 pg/mL	2 x 96 well plates	ab46046
IL7	Hu	6.25 pg/mL - 200 pg/mL	< 3 pg/mL	1 x 96 well plate	ab46031
IL7	Hu	6.25 pg/mL - 200 pg/mL	< 3 pg/mL	2 x 96 well plates	ab46047
IL7	Hu	4.1 pg/mL - 1000 pg/mL	< 5 pg/mL	1 x 96 well plate	ab100574
IL7	Ms	8.23 pg/mL - 6000 pg/mL	< 10 pg/mL	1 x 96 well plate	ab100714
IL8	Hu	62.5 pg/mL - 2000 pg/mL	< 25 pg/mL	1 x 96 well plate	ab46032
IL8	Hu	62.5 pg/mL - 2000 pg/mL	< 25 pg/mL	2 x 96 well plates	ab46049
IL8	Hu	0.8 pg/mL - 600 pg/mL	< 1 pg/mL	1 x 96 well plate	ab100575
IL8	Hu	0.8 pg/mL - 600 pg/mL	< 1 pg/mL	1 x 96 well plate	ab100576
IL9	Hu	0.04 ng/mL - 30 ng/mL	< 0.1 ng/mL	1 x 96 well plate	ab100577
IL9	Ms	0.0823 ng/mL - 60 ng/mL	< 0.1 ng/mL	1 x 96 well plate	ab100715
IL10	Hu	12.5 pg/mL - 400 pg/mL	< 5 pg/mL	1 x 96 well plate	ab46034
IL10	Hu	12.5 pg/mL - 400 pg/mL	< 5 pg/mL	2 x 96 well plates	ab46057
IL10	Hu	1.56 pg/mL - 50 pg/mL	< 1.30 pg/mL	1 x 96 well plate	ab46059
IL10	Hu	1.56 pg/mL - 50 pg/mL	< 1.30 pg/mL	2 x 96 well plates	ab46061
IL10	Hu	2.34 pg/mL - 150 pg/mL	< 1 pg/mL	1 x 96 well plate	ab100549
IL10	Ms	31.25 pg/mL - 1000 pg/mL	< 20 pg/mL	1 x 96 well plate	ab46103
IL10	Ms	31.25 pg/mL - 1000 pg/mL	< 20 pg/mL	2 x 96 well plates	ab46104
IL10	Ms	78.13 pg/mL - 5000 pg/mL	< 45 pg/mL	1 x 96 well plate	ab100697
IL10	Rat	8.23 pg/mL - 6000 pg/mL	< 10 pg/mL	1 x 96 well plate	ab100764
IL10	Rat	8.23 pg/mL - 6000 pg/mL	< 10 pg/mL	1 x 96 well plate	ab100765
IL10RB	Hu	4.12 pg/mL - 3000 pg/mL	< 5 pg/mL	1 x 96 well plate	ab100550
IL11	Hu	3.29 pg/mL - 800 pg/mL	< 3 pg/mL	1 x 96 well plate	ab100551
IL11	Ms	1.235 ng/mL - 300 ng/mL	< 1 ng/mL	1 x 96 well plate	ab100698
IL12	Hu	0.78 pg/mL - 25 pg/mL	< 0.75 pg/mL	1 x 96 well plate	ab46035
IL12	Hu	0.78 pg/mL - 25 pg/mL	< 0.75 pg/mL	2 x 96 well plate	ab46062
IL12	Hu	6.25 pg/mL - 200 pg/mL	< 3 pg/mL	1 x 96 well plate	ab46101
IL12	Hu	6.25 pg/mL - 200 pg/mL	< 3 pg/mL	2 x 96 well plates	ab46143
IL12 p40 + IL12 p70	Ms	2.74 pg/mL - 2000 pg/mL	< 5 pg/mL	1 x 96 well plate	ab100699
IL12 p70	Hu	0.8 pg/mL - 600 pg/mL	< 1 pg/mL	1 x 96 well plate	ab100552
IL12B	Hu	62.5 pg/mL - 2000 pg/mL	< 20 pg/mL	1 x 96 well plate	ab46037
IL12B	Hu	62.5 pg/mL - 2000 pg/mL	< 20 pg/mL	2 x 96 well plates	ab46064
IL13	Hu	3.12 pg/mL - 100 pg/mL	< 1.5 pg/mL	1 x 96 well plate	ab46038
IL13	Hu	3.12 pg/mL - 100 pg/mL	< 1.5 pg/mL	2 x 96 well plates	ab46065
IL13	Hu	0.16 pg/mL - 40 pg/mL	< 0.15 pg/mL	1 x 96 well plate	ab100553
IL13	Ms	8.23 pg/mL - 2000 pg/mL	< 6 pg/mL	1 x 96 well plate	ab100700
IL13	Rat	27.43 pg/mL - 20000 pg/mL	< 20 pg/mL	1 x 96 well plate	ab100766
IL13R alpha2	Hu	156 pg/mL - 5000 pg/mL	< 150 pg/mL	1 x 96 well plate	ab46066
IL13R alpha2	Hu	156 pg/mL - 5000 pg/mL	< 150 pg/mL	2 x 96 well plates	ab46112
IL15	Hu	3.3 pg/mL - 800 pg/mL	< 3 pg/mL	1 x 96 well plate	ab100554
IL15	Ms	0.33 ng/mL - 80 ng/mL	< 0.5 ng/mL	1 x 96 well plate	ab100701
IL16	Hu	4.12 pg/mL - 3000 pg/mL	< 5 pg/mL	1 x 96 well plate	ab100555
IL17	Ms	6.1 pg/mL - 600 pg/mL	< 6 pg/mL	1 x 96 well plate	ab100702
IL17	Hu	3.12 pg/mL - 100 pg/mL	< 3 pg/mL	1 x 96 well plate	ab83688
IL17	Hu	3.12 pg/mL - 100 pg/mL	< 3 pg/mL	2 x 96 well plates	ab83692
IL17	Hu	15.63 pg/mL - 1000 pg/mL	< 10 pg/mL	1 x 96 well plate	ab100556
IL17A Receptor	Hu	12.35 pg/mL - 3000 pg/mL	< 10 pg/mL	1 x 96 well plate	ab100558
IL18 binding protein	Hu	24.69 pg/mL - 18000 pg/mL	< 20 pg/mL	1 x 96 well plate	ab100559
IL17B	Ms	16.46 pg/mL - 12000 pg/mL	< 12 pg/mL	1 x 96 well plate	ab100703
IL17F	Hu	13.72 pg/mL - 10000 pg/mL	< 20 pg/mL	1 x 96 well plate	ab100557
IL21	Ms	8.19 pg/mL - 2000 pg/mL	< 6 pg/mL	1 x 96 well plate	ab100707
IL23	Hu	156.25 pg/mL - 5000 pg/mL	< 20 pg/mL	1 x 96 well plate	ab64708
IL23	Hu	156.25 pg/mL - 5000 pg/mL	< 20 pg/mL	2 x 96 well plates	ab64709

ELISA kits

Target	Reacts with	Range	Sensitivity	Number of plates	Catalog # www.abcam.com/...
IL27	Hu	31.25 pg/mL - 1000 pg/mL	< 12.8 pg/mL	1 x 96 well plate	ab83695
IL27	Hu	31.25 pg/mL - 1000 pg/mL	< 12.8 pg/mL	2 x 96 well plates	ab83698
IL28	Ms	2.46 pg/mL - 600 pg/mL	< 2 pg/mL	1 x 96 well plate	ab100708
IL28A	Hu	13.72 pg/mL - 10000 pg/mL	< 15 pg/mL	1 x 96 well plate	ab100567
IL29	Hu	18.29 pg/mL - 10000 pg/mL	< 20 pg/mL	1 x 96 well plate	ab100568
Insulin	Hu	4.69 uIU/mL - 300 uIU/mL	< 4 uIU/mL	1 x 96 well plate	ab100578
Interferon gamma	Hu	0.78 pg/mL - 25 pg/mL	< 0.69 pg/mL	1 x 96 well plate	ab46048
Interferon gamma	Hu	0.78 pg/mL - 25 pg/mL	< 0.69 pg/mL	2 x 96 well plates	ab46050
Interferon gamma	Hu	20.6 pg/mL - 15000 pg/mL	< 15 pg/mL	1 x 96 well plate	ab100537
Interferon gamma	Hu	20.6 pg/mL - 15000 pg/mL	< 15 pg/mL	1 x 96 well plate	ab100538
Interferon gamma	Hu, Mk	12.5 pg/mL - 400 pg/mL	< 5 pg/mL	1 x 96 well plate	ab46025
Interferon gamma	Hu	12.5 pg/mL - 400 pg/mL	< 5 pg/mL	2 x 96 well plates	ab46045
Interferon gamma	Ms	31.25 pg/mL - 1000 pg/mL	< 15 pg/mL	1 x 96 well plate	ab46081

ELISA Review - Mouse Interferon gamma ELISA Kit (ab46081)



ELISA kit ab46081 was given an 'excellent' customer rating recently. 🌟🌟🌟🌟🌟

Sample: Mouse Serum (Plasma)
 Specification: Plasma
 Amount of Sample: 10 µg
 Positive Control: C57Bl/6 male mice 8 weeks of age were treated with LPS IP 1mg/kg (0111:B4). After 4 hours blood was collected in EDTA coated tubes. 1:10 dilutions of plasma were made with standard diluent and used for ELISA. All samples (1:10 diluted) were in range of the standard curve.

Did you use the Abcam Kit protocol? Yes

Typical mIFN gamma standard curve ranging from 31.25 to 1000 pg/mL

Interferon gamma	Ms	31.25 pg/mL - 1000 pg/mL	< 15 pg/mL	2 x 96 well plates	ab46121
Interferon gamma	Ms	2.74 pg/mL - 2000 pg/mL	< 5 pg/mL	1 x 96 well plate	ab100689
Interferon gamma	Ms	2.74 pg/mL - 2000 pg/mL	< 10 pg/mL	1 x 96 well plate	ab100690
Interferon gamma	Rat	31.25 pg/mL - 1000 pg/mL	< 10 pg/mL	1 x 96 well plate	ab46107
Interferon gamma	Rat	31.25 pg/mL - 1000 pg/mL	< 10 pg/mL	2 x 96 well plates	ab46072
IP10	Hu	6.25 pg/mL - 200 pg/mL	< 5.7 pg/mL	1 x 96 well plate	ab83700
IP10	Hu	6.25 pg/mL - 200 pg/mL	< 5.7 pg/mL	2 x 96 well plates	ab83702
IP10	Hu	8.23 pg/mL - 6000 pg/mL	< 8 pg/mL	1 x 96 well plate	ab100579
IP10	Ms	8.2 pg/mL - 2000 pg/mL	< 15 pg/mL	1 x 96 well plate	ab100675
LEC	Hu	8.23 pg/mL - 6000 pg/mL	< 8 pg/mL	1 x 96 well plate	ab100532
Leptin	Hu	4.1 pg/mL - 400 pg/mL	< 6 pg/mL	1 x 96 well plate	ab100581
Leptin	Ms	0.82 pg/mL - 200 pg/mL	< 1.5 pg/mL	1 x 96 well plate	ab100718
Leptin	Rat	10.97 pg/mL - 8000 pg/mL	< 30 pg/mL	1 x 96 well plate	ab100773
LIF	Hu	8.23 pg/mL - 6000 pg/mL	< 15 pg/mL	1 x 96 well plate	ab100582
LIGHT	Hu	8.23 pg/mL - 6000 pg/mL	< 15 pg/mL	1 x 96 well plate	ab100583
Lymphotactin	Hu	0.069 ng/mL - 50 ng/mL	< 150 pg/mL	1 x 96 well plate	ab100584
Lymphotactin	Ms	4.12 pg/mL - 3000 pg/mL	< 4 pg/mL	1 x 96 well plate	ab100720
LYVE1	Hu	8.19 pg/mL - 2000 pg/mL	< 8 pg/mL	1 x 96 well plate	ab100585
Macrophage Inflammatory Protein 1 alpha / CCL3	Hu	4.12 pg/mL - 3000 pg/mL	< 6 pg/mL	1 x 96 well plate	ab100596
Macrophage Inflammatory Protein 1 alpha / CCL3	Ms	4.1 pg/mL - 1000 pg/mL	< 8 pg/mL	1 x 96 well plate	ab100726
Macrophage Inflammatory Protein 1 beta	Hu	4.1 pg/mL - 1000 pg/mL	< 2.5 pg/mL	1 x 96 well plate	ab100597

Scientific support: www.abcam.com/technical | ELISA resources: www.abcam.com/elisa
 Species abbreviations key: Hu: Human | Ms: Mouse | Mcq: Macaque | Mk: Monkey | Rt: Rat

ELISA kits

Target	Reacts with	Range	Sensitivity	Number of plates	Catalog # www.abcam.com/...
Macrophage Inflammatory Protein 3	Hu	8.23 pg/mL - 6000 pg/mL	< 7 pg/mL	1 x 96 well plate	ab100611
Macrophage Inflammatory Protein 3 alpha	Hu	0.8 pg/mL - 600 pg/mL	< 1.5 pg/mL	1 x 96 well plate	ab100599
Macrophage Inflammatory Protein 3 alpha	Hu	0.8 pg/mL - 600 pg/mL	< 1.5 pg/mL	1 x 96 well plate	ab100600
Macrophage Inflammatory Protein 3 alpha	Ms	-	-	1 x 96 well plate	ab100728
Macrophage Inflammatory Protein 3 beta	Hu	2.05 pg/mL - 500 pg/mL	< 2 pg/mL	1 x 96 well plate	ab100601
Macrophage Inflammatory Protein 4	Hu	-	-	1 x 96 well plate	ab100620
Macrophage inflammatory protein 5	Hu	4.1 pg/mL - 1000 pg/mL	< 3 pg/mL	1 x 96 well plate	ab100598
Macrophage Stimulating Protein MCP1	Hu	8.23 pg/mL - 2000 pg/mL	< 8 pg/mL	1 x 96 well plate	ab100612
MCP1	Hu	2 pg/mL - 500 pg/mL	< 2 pg/mL	1 x 96 well plate	ab100586
MCP1	Ms	2.74 pg/mL - 2000 pg/mL	< 3 pg/mL	1 x 96 well plate	ab100721
MCP1	Ms	2.74 pg/mL - 2000 pg/mL	< 3 pg/mL	1 x 96 well plate	ab100722
MCP1	Rat	24.67 pg/mL - 18000 pg/mL	< 15 pg/mL	1 x 96 well plate	ab100777
MCP1	Rat	0.625 pg/mL - 40 pg/mL	< 15 pg/mL	1 x 96 well plate	ab100778
MCP2	Hu	0.82 pg/mL - 200 pg/mL	< 1.5 pg/mL	1 x 96 well plate	ab100587
MCP3	Hu	24.58 pg/mL - 6000 pg/mL	< 20 pg/mL	1 x 96 well plate	ab100588
MCP4	Hu	3.13 pg/mL - 200 pg/mL	< 3 pg/mL	1 x 96 well plate	ab100589
MCP5	Ms	0.41 pg/mL - 100 pg/mL	< 0.5 pg/mL	1 x 96 well plate	ab100723
MCSF	Hu	2.78 pg/mL - 2000 pg/mL	< 5 pg/mL	1 x 96 well plate	ab100590
MDC	Hu	1.65 pg/mL - 400 pg/mL	< 1.5 pg/mL	1 x 96 well plate	ab100591
MICA	Hu	156 pg/mL - 5000 pg/mL	< 123 pg/mL	1 x 96 well plate	ab59569
MICA	Hu	156 pg/mL - 5000 pg/mL	< 123 pg/mL	2 x 96 well plates	ab59570
MICA	Hu	13.72 pg/mL - 10000 pg/mL	< 20 pg/mL	1 x 96 well plate	ab100592
MICB	Hu	0.0686 ng/mL - 50 ng/mL	< 75 pg/mL	1 x 96 well plate	ab100593
MIF	Hu	8.23 pg/mL - 6000 pg/mL	< 6 pg/mL	1 x 96 well plate	ab100594
MIG	Hu	8.23 pg/mL - 6000 pg/mL	< 20 pg/mL	1 x 96 well plate	ab100595
MIG	Ms	2.741 pg/mL - 2000 pg/mL	< 3 pg/mL	1 x 96 well plate	ab100725
Milk Fat Globule 1	Ms	0.823 pg/mL - 600 pg/mL	< 1 pg/mL	1 x 96 well plate	ab100724
MMP1	Hu	24.69 pg/mL - 18000 pg/mL	< 8 pg/mL	1 x 96 well plate	ab100603
MMP1	Hu	24.69 pg/mL - 18000 pg/mL	< 8 pg/mL	1 x 96 well plate	ab100604
MMP2	Hu	3.3 ng/mL - 800 ng/mL	< 3.5 ng/mL	1 x 96 well plate	ab100606
MMP2	Ms	27.43 pg/mL - 20000 pg/mL	< 25 pg/mL	1 x 96 well plate	ab100730
MMP3	Hu	0.41 ng/mL - 100 ng/mL	< 0.3 ng/mL	1 x 96 well plate	ab100607
MMP3	Ms	13.72 pg/mL - 10000 pg/mL	< 10 pg/mL	1 x 96 well plate	ab100731
MMP7	Hu	0.082 ng/mL - 60 ng/mL	< 80 pg/mL	1 x 96 well plate	ab100608
MMP8	Hu	8.23 pg/mL - 6000 pg/mL	< 6 pg/mL	1 x 96 well plate	ab100609
MMP8	Rat	0.05 ng/mL - 40 ng/mL	< 50 pg/mL	1 x 96 well plate	ab100779
MMP9	Hu	8.23 pg/mL - 6000 pg/mL	< 10 pg/mL	1 x 96 well plate	ab100610
MMP9	Ms	74.07 pg/mL - 18000 pg/mL	< 50 pg/mL	1 x 96 well plate	ab100732
MMP10	Hu	2.06 pg/mL - 1500 pg/mL	< 3 pg/mL	1 x 96 well plate	ab100602
MMP13	Hu	8.23 pg/mL - 6000 pg/mL	< 6 pg/mL	1 x 96 well plate	ab100605
NBL1	Hu	27.43 pg/mL - 20000 pg/mL	< 35 pg/mL	1 x 96 well plate	ab99997
Neurotrophin 3	Hu	4.12 pg/mL - 3000 pg/mL	< 4 pg/mL	1 x 96 well plate	ab100615
NGF	Rat	20.58 pg/mL - 15000 pg/mL	< 15 pg/mL	1 x 96 well plate	ab100757
NGF	Hu	13.72 pg/mL - 10000 pg/mL	< 14 pg/mL	1 x 96 well plate	ab99986
NRG1 beta 1	Hu	82.3 pg/mL - 20000 pg/mL	< 50 pg/mL	1 x 96 well plate	ab100614
Oncostatin M	Hu	1.37 pg/mL - 1000 pg/mL	< 1 pg/mL	1 x 96 well plate	ab100619
Osteopontin	Hu	74.07 pg/mL - 18000 pg/mL	< 50 pg/mL	1 x 96 well plate	ab100618
Osteopontin	Ms	8.23 pg/mL - 6000 pg/mL	< 8 pg/mL	1 x 96 well plate	ab100734
Osteoprotegerin	Hu	1.23 pg/mL - 900 pg/mL	< 1 pg/mL	1 x 96 well plate	ab100617
Osteoprotegerin	Ms	1.65 pg/mL - 1200 pg/mL	< 1 pg/mL	1 x 96 well plate	ab100733
P cadherin	Hu	2.47 pg/mL - 18000 pg/mL	< 20 pg/mL	1 x 96 well plate	ab100621
p53	Hu	3.1 U/mL - 100 U/mL	< 1.5 U/mL	1 x 96 well plate	ab46067

ELISA kits

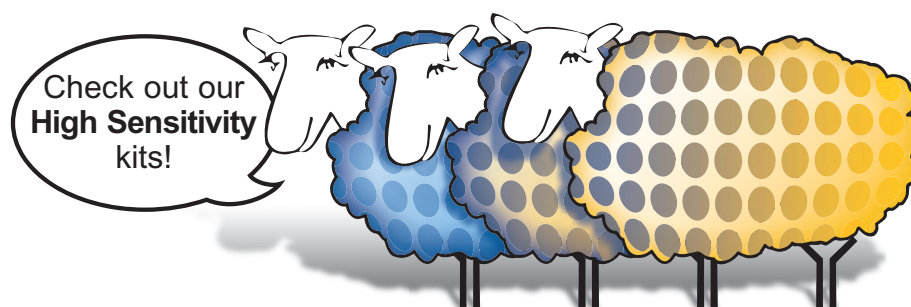
Target	Reacts with	Range	Sensitivity	Number of plates	Catalog # www.abcam.com/...
p53	Hu	3.1 U/mL - 100 U/mL	< 1.5 U/mL	2 x 96 well plates	ab46113
PDGF AB	Hu	10.24 pg/mL - 2500 pg/mL	< 10 pg/mL	1 x 96 well plate	ab100623
PDGF BB	Hu	0.549 pg/mL - 400 pg/mL	< 1 pg/mL	1 x 96 well plate	ab100624
PDGF BB	Hu	0.549 pg/mL - 400 pg/mL	< 1 pg/mL	1 x 96 well plate	ab100625
PDGF Receptor beta	Hu	24.69 pg/mL - 18000 pg/mL	< 25 pg/mL	1 x 96 well plate	ab100626
Perforin	Hu	62.5 pg/mL - 2000 pg/mL	< 40 pg/mL	1 x 96 well plate	ab46068
Perforin	Hu	62.5 pg/mL - 2000 pg/mL	< 40 pg/mL	2 x 96 well plates	ab46115
PF4	Hu	20.58 pg/mL - 15000 pg/mL	< 20 pg/mL	1 x 96 well plate	ab100628
PF4	Ms	4.12 pg/mL - 3000 pg/mL	< 6 pg/mL	1 x 96 well plate	ab100735
Prolactin	Ms	27.43 pg/mL - 20000 pg/mL	< 30 pg/mL	1 x 96 well plate	ab100736
RAGE	Hu	2.06 pg/mL - 1500 pg/mL	< 3 pg/mL	1 x 96 well plate	ab100632
RAGE	Ms	13.72 pg/mL - 10000 pg/mL	< 15 pg/mL	1 x 96 well plate	ab100738
RAGE	Rat	0.41 ng/mL - 300 ng/mL	< 300 pg/mL	1 x 96 well plate	ab100780
RANKL	Ms	2.74 pg/mL - 2000 pg/mL	< 4 pg/mL	1 x 96 well plate	ab100749
RANTES	Hu	2.74 pg/mL - 2000 pg/mL	< 3 pg/mL	1 x 96 well plate	ab100633
RANTES	Ms	200 pg/mL - 0.82 pg/mL	< 1 pg/mL	1 x 96 well plate	ab100739
Resistin	Hu	1.4 pg/mL - 400 pg/mL	< 2 pg/mL	1 x 96 well plate	ab100634
SCF	Hu	2.74 pg/mL - 2000 pg/mL	< 2 pg/mL	1 x 96 well plate	ab100636
SCF	Ms	2.74 pg/mL - 2000 pg/mL	< 5 pg/mL	1 x 96 well plate	ab100740
SDF1 alpha	Hu	6.14 pg/mL - 1500 pg/mL	< 10 pg/mL	1 x 96 well plate	ab100637
SDF1 alpha	Ms	9.38 pg/mL - 600 pg/mL	< 3 pg/mL	1 x 96 well plate	ab100741
Serum Amyloid A	Hu	0.41 ng/mL - 300 ng/mL	< 0.5 ng/mL	1 x 96 well plate	ab100635
SIGLEC5	Hu	6.86 pg/mL - 5000 pg/mL	< 8 pg/mL	1 x 96 well plate	ab100641
Soluble TNF Receptor I	Hu	0.55 pg/mL - 400 pg/mL	< 1 pg/mL	1 x 96 well plate	ab100642
Soluble TNF Receptor II	Hu	2.74 pg/mL - 2000 pg/mL	< 5 pg/mL	1 x 96 well plate	ab100643
Sonic Hedgehog	Hu	13.72 pg/mL - 10000 pg/mL	< 20 pg/mL	1 x 96 well plate	ab100639
ST2	Hu	1.65 pg/mL - 1200 pg/mL	< 2 pg/mL	1 x 96 well plate	ab100563
Syndecan	Hu	8 ng/mL - 256 ng/mL	< 2.56 ng/mL	1 x 96 well plate	ab46506
Syndecan	Hu	8 ng/mL - 256 ng/mL	< 2.56 ng/mL	2 x 96 well plates	ab46507
TARC	Hu	4.1 pg/mL - 1000 pg/mL	< 5 pg/mL	1 x 96 well plate	ab100644
TECK	Hu	0.206 ng/mL - 150 ng/mL	< 200 pg/mL	1 x 96 well plate	ab100645
TECK	Ms	20.5 pg/mL - 2000 pg/mL	< 15 pg/mL	1 x 96 well plate	ab100743
TGF alpha	Hu	1.37 pg/mL - 1000 pg/mL	< 3 pg/mL	1 x 96 well plate	ab100646
TGF beta 1	Hu	0.0823 ng/mL - 60 ng/mL	< 80 pg/mL	1 x 96 well plate	ab100647
TGF beta 2	Hu	8.23 pg/mL - 6000 pg/mL	< 15 pg/mL	1 x 96 well plate	ab100648
Thrombomodulin	Hu	0.625 ng/mL - 20 ng/mL	< 0.38 ng/mL	1 x 96 well plate	ab46508
Thrombomodulin	Hu	0.625 ng/mL - 20 ng/mL	< 0.38 ng/mL	2 x 96 well plates	ab46509
Thrombopoietin	Hu	24.69 pg/mL - 6000 pg/mL	< 25 pg/mL	1 x 96 well plate	ab100656
Thrombopoietin	Ms	27.4 pg/mL - 20000 pg/mL	< 30 pg/mL	1 x 96 well plate	ab100748
TIE1	Hu	0.68 ng/mL - 500 ng/mL	< 0.6 ng/mL	1 x 96 well plate	ab100649
TIE2	Hu	20.58 pg/mL - 15000 pg/mL	< 20 pg/mL	1 x 96 well plate	ab100650
TIMP1	Hu	24.69 pg/mL - 18000 pg/mL	< 40 pg/mL	1 x 96 well plate	ab100651
TIMP1	Hu	24.69 pg/mL - 18000 pg/mL	< 30 pg/mL	1 x 96 well plate	ab100652
TIMP1	Ms	1.37 pg/mL - 1000 pg/mL	< 3 pg/mL	1 x 96 well plate	ab100744
TIMP1	Rat	4.1 pg/mL - 3000 pg/mL	< 4 pg/mL	1 x 96 well plate	ab100782
TIMP1	Rat	4.1 pg/mL - 3000 pg/mL	< 4 pg/mL	1 x 96 well plate	ab100783
TIMP2	Hu	1.6 pg/mL - 1200 pg/mL	< 2 pg/mL	1 x 96 well plate	ab100653
TIMP2	Ms	0.0823 ng/mL - 60 ng/mL	< 80 pg/mL	1 x 96 well plate	ab100746
TNF alpha	Hu	25 pg/mL - 800 pg/mL	< 8 pg/mL	1 x 96 well plate	ab46087
TNF alpha	Hu	25 pg/mL - 800 pg/mL	< 10 pg/mL	2 x 96 well plates	ab46088
TNF alpha	Hu	8.23 pg/mL - 6000 pg/mL	< 15 pg/mL	1 x 96 well plate	ab100654
TNF alpha	Ms	31.25 pg/mL - 1000 pg/mL	< 25 pg/mL	1 x 96 well plate	ab46105
TNF alpha	Ms	31.25 pg/mL - 1000 pg/mL	< 25 pg/mL	2 x 96 well plates	ab46106
TNF alpha	Ms	93.75 pg/mL - 6000 pg/mL	< 60 pg/mL	1 x 96 well plate	ab100747
TNF alpha	Porcine	0.012 ng/mL - 50 ng/mL	< 20 pg/mL	1 x 96 well plate	ab100756
TNF alpha	Rat	31.25 pg/mL - 1000 pg/mL	< 15 pg/mL	1 x 96 well plate	ab46070
TNF alpha	Rat	31.25 pg/mL - 1000 pg/mL	< 15 pg/mL	2 x 96 well plates	ab46079

ELISA kits

Target	Reacts with	Range	Sensitivity	Number of plates	Catalog # www.abcam.com/...
TNF alpha	Rat	82.3 pg/mL - 20000 pg/mL	< 25 pg/mL	1 x 96 well plate	ab100784
TNF alpha	Rat	82.3 pg/mL - 20000 pg/mL	< 25 pg/mL	1 x 96 well plate	ab100785
TNFRSF18	Hu	13.7 pg/mL - 10000 pg/mL	< 15 pg/mL	1 x 96 well plate	ab100527
TNFRSF18	Hu	13.7 pg/mL - 10000 pg/mL	< 15 pg/mL	1 x 96 well plate	ab100528
TRAIL	Hu	93.75 pg/mL - 3000 pg/mL	< 64 pg/mL	1 x 96 well plate	ab46074
TRAIL	Hu	93.75 pg/mL - 3000 pg/mL	< 64 pg/mL	2 x 96 well plates	ab46117
TREM1	Hu	5.49 pg/mL - 4000 pg/mL	< 8 pg/mL	1 x 96 well plate	ab100659
TSH	Hu	2.744 pg/mL - 2000 pg/mL	< 4 pg/mL	1 x 96 well plate	ab100660
VCAM1	Hu	1.56 ng/mL - 50 ng/mL	< 0.6 ng/mL	1 x 96 well plate	ab46075
VCAM1	Hu	1.56 ng/mL - 50 ng/mL	< 0.6 ng/mL	2 x 96 well plates	ab46118
VCAM1	Hu	0.247 ng/mL - 60 ng/mL	< 0.3 ng/mL	1 x 96 well plate	ab100661
VCAM1	Ms	2.05 pg/mL - 500 pg/mL	< 1.5 pg/mL	1 x 96 well plate	ab100750
VEGF	Ms	4.1 pg/mL - 1000 pg/mL	< 2 pg/mL	1 x 96 well plate	ab100752
VEGF	Hu	8.23 pg/mL - 6000 pg/mL	< 10 pg/mL	1 x 96 well plate	ab100662
VEGF	Hu	8.23 pg/mL - 6000 pg/mL	< 10 pg/mL	1 x 96 well plate	ab100663
VEGF	Ms	4.1 pg/mL - 1000 pg/mL	< 2 pg/mL	1 x 96 well plate	ab100751
VEGF	Rat	0.82 pg/mL - 200 pg/mL	< 2 pg/mL	1 x 96 well plate	ab100786
VEGF	Rat	0.82 pg/mL - 200 pg/mL	< 2 pg/mL	1 x 96 well plate	ab100787
VEGF Receptor 2	Hu	34.3 pg/mL - 25000 pg/mL	< 70 pg/mL	1 x 96 well plate	ab100665
VEGF Receptor 3	Hu	12.29 pg/mL - 3000 pg/mL	< 15 pg/mL	1 x 96 well plate	ab100666
VEGFC	Hu	13.72 pg/mL - 10000 pg/mL	< 15 pg/mL	1 x 96 well plate	ab100664

ELISA Reagents

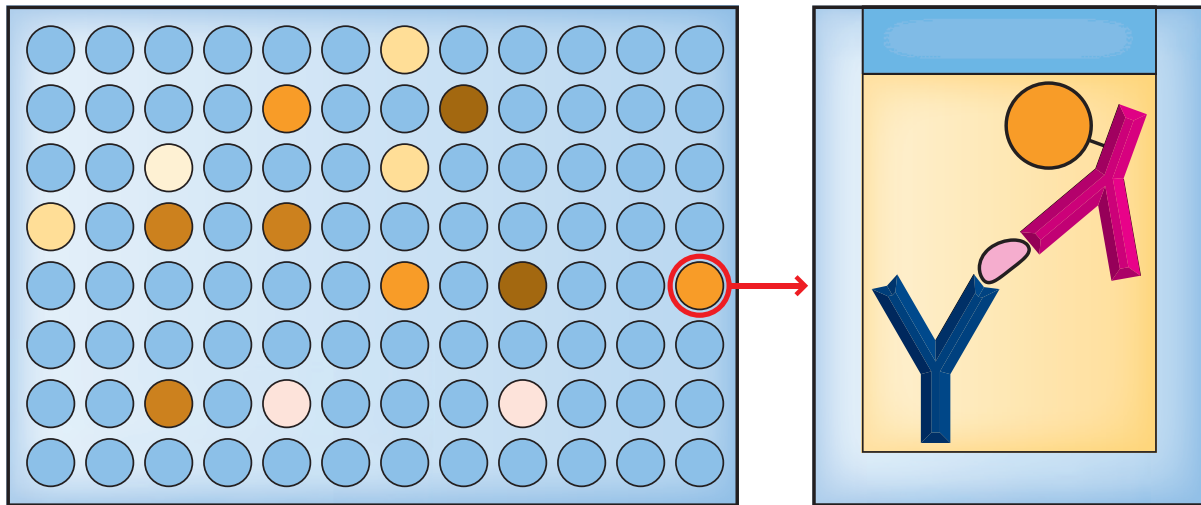
Target	Catalog # www.abcam.com/...
Biotinylated Antibody Diluent	85954
Biotinylated Antibody Diluent	86038
Chromogen TMB	86039
Chromogen TMB	86036
Streptavidin-HRP	88984
Extra Standard for Interferon gamma ELISA Kit	59555



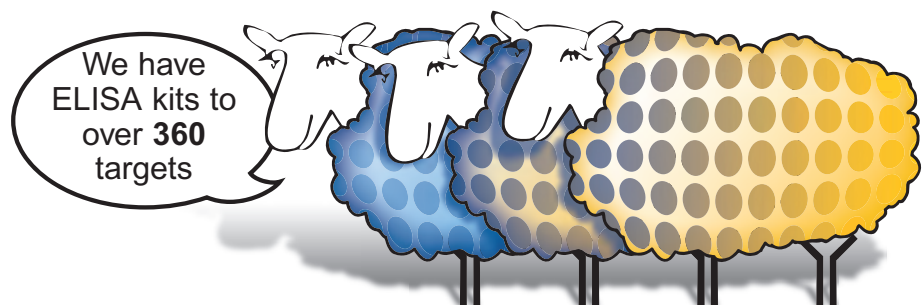
ELIPAIR

Standard ELIPAIR and High Sensitivity ELIPAIR kits

Choose ELIPAIR kits for laboratory validated matched antibody pairs for use in ELISA - saving you time and effort. These kits include an unlabeled capture antibody, a biotinylated detection antibody as well as protein standards and substrates. ELIPAIRs allow you to be flexible in setting up your ELISAs.



- Ideal for high throughput protein analysis
- High Sensitivity ELIPAIR kits are also available which, in similarity to the High Sensitivity ELISA kits, are 10 times more sensitivity than standard ELIPAIR (< 1 pg/mL)
- ELIPAIR kits available in 5, 10, 15 and 20, 96 well plate formats



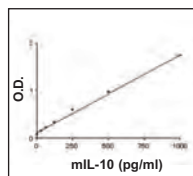
ELIPAIR kits

Target	Reacts with	Range	Sensitivity	Enough Reagents for	Catalog # www.abcam.com/...
CD62E	Hu	1 ng/mL - 32 ng/mL	< 0.5 ng/mL	5 x 96 well plates	ab47348
CD62E	Hu	1 ng/mL - 32 ng/mL	< 0.5 ng/mL	10 x 96 well plates	ab47360
CD62E	Hu	1 ng/mL - 32 ng/mL	< 0.5 ng/mL	20 x 96 well plates	ab48874
Fas Ligand	Hu	62.5 pg/mL - 2000 pg/mL	< 44 pg/mL	5 x 96 well plates	ab83703
Fas Ligand	Hu	62.5 pg/mL - 2000 pg/mL	< 44 pg/mL	10 x 96 well plates	ab83705
ICAM1	Hu	0.25 ng/mL - 8 ng/mL	< 0.1 ng/mL	10 x 96 well plates	ab47361
ICAM1	Hu	0.25 ng/mL - 8 ng/mL	< 0.1 ng/mL	15 x 96 well plates	ab48875
ICAM1	Hu	0.25 ng/mL - 8 ng/mL	< 0.1 ng/mL	20 x 96 well plates	ab48876
IL1 alpha	Hu	31.2 pg/mL - 1000 pg/mL	< 10 pg/mL	5 x 96 well plates	ab47350
IL1 alpha	Hu	31.2 pg/mL - 1000 pg/mL	< 10 pg/mL	10 x 96 well plates	ab47362
IL1 alpha	Hu	31.25 pg/mL - 1000 pg/mL	< 10 pg/mL	15 x 96 well plates	ab48877
IL1 alpha	Hu	31.25 pg/mL - 1000 pg/mL	< 10 pg/mL	20 x 96 well plates	ab48878
IL1 beta	Hu	15.6 pg/mL - 500 pg/mL	< 5 pg/mL	10 x 96 well plates	ab47443
IL1 beta	Hu	15.6 pg/mL - 500 pg/mL	< 5 pg/mL	15 x 96 well plates	ab48879
IL1 beta	Hu	15.6 pg/mL - 500 pg/mL	< 5 pg/mL	20 x 96 well plates	ab48880
IL2	Hu	31.25 pg/mL - 1000 pg/mL	< 15 pg/mL	5x 96 well plates	ab48471
IL2	Hu	31.25 pg/mL - 1000 pg/mL	< 15 pg/mL	10 x 96 well plates	ab48473
IL2	Hu	31.25 pg/mL - 1000 pg/mL	< 10 pg/mL	15 x 96 well plates	ab48767
IL2	Hu	31.25 pg/mL - 1000 pg/mL	< 10 pg/mL	20 x 96 well plates	ab48768
IL2	Ms	15.6 pg/mL - 500 pg/mL	< 5 pg/mL	5 x 96 well plates	ab47591
IL2	Ms	15.6 pg/mL - 500 pg/mL	< 5 pg/mL	10 x 96 well plates	ab47592
IL2	Ms	15.6 pg/mL - 500 pg/mL	< 10 pg/mL	15 x 96 well plates	ab48898
IL2	Ms	15.6 pg/mL - 500 pg/mL	< 5 pg/mL	20 x 96 well plates	ab48899
IL2 Receptor alpha	Hu	68.75 pg/mL - 2220 pg/mL	< 8 pg/mL	5 x 96 well plates	ab47354
IL2 Receptor alpha	Hu	68.75 pg/mL - 2200 pg/mL	< 8 pg/mL	5 x 96 well plates	ab48885
IL2 Receptor alpha	Hu	68.75 pg/mL - 2220 pg/mL	< 8 pg/mL	10 x 96 well plates	ab47448
IL2 Receptor alpha	Hu	68.75 pg/mL - 2200 pg/mL	< 8 pg/mL	20 x 96 well plates	ab48886
IL4	Hu	1.1 pg/mL - 35 pg/mL	< 0.5 pg/mL	5 x 96 well plates	ab48474
IL4	Hu	1.1 pg/mL - 35 pg/mL	< 0.5 pg/mL	10 x 96 well plates	ab48477
IL4	Hu	1.1 pg/mL - 35 pg/mL	< 0.5 pg/mL	15 x 96 well plates	ab48769
IL4	Hu	1.1 pg/mL - 35 pg/mL	< 0.5 pg/mL	20 x 96 well plates	ab48770
IL4	Rt	31.25 pg/mL - 1000 pg/mL	< 15 pg/mL	5 x 96 well plates	ab48423
IL4	Rt	31.25 pg/mL - 1000 pg/mL	< 15 pg/mL	10 x 96 well plates	ab48424
IL4	Rt	31.25 pg/mL - 1000 pg/mL	< 15 pg/mL	15 x 96 well plates	ab48913
IL4	Rt	31.25 pg/mL - 1000 pg/mL	< 15 pg/mL	20 x 96 well plates	ab48917
IL5	Hu	7.8 pg/mL - 250 pg/mL	< 5 pg/mL	5 x 96 well plates	ab47356
IL5	Hu	7.8 pg/mL - 250 pg/mL	< 5 pg/mL	10x96 well plates	ab47462
IL5	Hu	7.8 pg/mL - 250 pg/mL	< 5 pg/mL	15 x 96 well plates	ab48890
IL5	Hu	7.8 pg/mL - 250 pg/mL	< 5 pg/mL	20 x 96 well plates	ab48892
IL6	Hu	6.25 pg/mL - 200 pg/mL	< 2 pg/mL	5 x 96 well plates	ab48478
IL6	Hu	6.25 pg/mL - 200 pg/mL	< 2 pg/mL	10 x 96 well plates	ab48479
IL6	Hu	6.25 pg/mL - 200 pg/mL	< 2 pg/mL	15 x 96 well plates	ab48772
IL6	Hu	6.25 pg/mL - 200 pg/mL	< 2 pg/mL	20 x 96 well plates	ab48773
IL6	Ms	15.6 pg/mL - 500 pg/mL	< 10 pg/mL	5 x 96 well plates	ab47596
IL6	Ms	15.6 pg/mL - 500 pg/mL	< 10 pg/mL	15 x 96 well plates	ab48900
IL6	Ms	15.6 pg/mL - 500 pg/mL	< 10 pg/mL	20 x 96 well plates	ab48901
IL7	Hu	6.25 pg/mL - 200 pg/mL	< 3 pg/mL	5 x 96 well plates	ab47357
IL7	Hu	6.25 pg/mL - 200 pg/mL	< 3 pg/mL	10 x 96 well plates	ab47588
IL7	Hu	6.25 pg/mL - 200 pg/mL	< 3 pg/mL	15 x 96 well plates	ab48893
IL7	Hu	6.25 pg/mL - 200 pg/mL	< 3 pg/mL	20 x 96 well plates	ab48894
IL8	Hu	62.5 pg/mL - 2000 pg/mL	< 25 pg/mL	5 x 96 well plates	ab48481
IL8	Hu	62.5 pg/mL - 2000 pg/mL	< 25 pg/mL	10 x 96 well plates	ab48483
IL8	Hu	62.5 pg/mL - 2000 pg/mL	< 25 pg/mL	15 x 96 well plates	ab48796
IL8	Hu	62.5 pg/mL - 2000 pg/mL	< 25 pg/mL	20 x 96 well plates	ab48797
IL10	Hu	12.5 pg/mL - 400 pg/mL	< 5 pg/mL	5 x 96 well plates	ab48485
IL10	Hu	12.5 pg/mL - 400 pg/mL	< 5 pg/mL	10 x 96 well plates	ab48486
IL10	Hu	12.5 pg/mL - 400 pg/mL	< 5 pg/mL	15 x 96 well plates	ab48798

ELIPAIR kits

Target	Reacts with	Range	Sensitivity	Enough Reagents for	Catalog # www.abcam.com/...
IL10	Hu	12.5 pg/mL - 400 pg/mL	< 5 pg/mL	20 x 96 well plates	ab48799
IL10	Ms	31.25 pg/mL - 1000 pg/mL	< 20 pg/mL	5 x 96 well plates	ab47599
IL10	Ms	31.25 pg/mL - 1000 pg/mL	< 20 pg/mL	10 x 96 well plates	ab47600

ELIPAIR kit references - Murine IL10 ELIPAIR Kit (ab47600)



A publication using ELIPAIR kit ab47600 was cited by Syn WK et al. Role for hedgehog pathway in regulating growth and function of invariant NKT cells. *Eur J Immunol* 39:1879-92 (2009).

If you have a recent publication using any of our ELISA products please let us know so that we can cite the reference on the relevant datasheet.

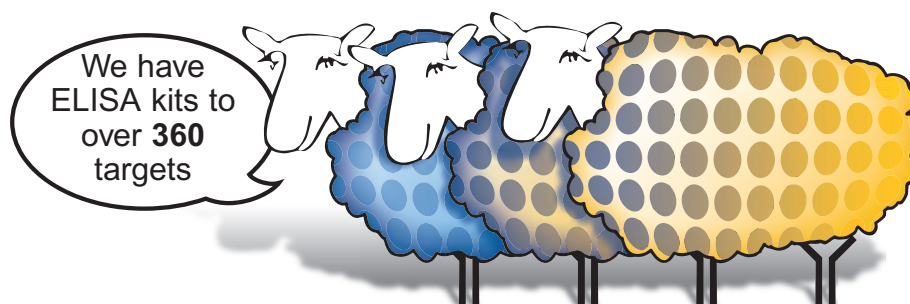
Murine IL10 standard curve ranging from 31.25 to 1000 pg/mL

IL10	Ms	31.25 pg/mL - 1000 pg/mL	< 20 pg/mL	15 x 96 well plates	ab48902
IL10	Ms	31.25 pg/mL - 1000 pg/mL	< 20 pg/mL	20 x 96 well plates	ab48903
IL12 p70	Hu	6.25 pg/mL - 200 pg/mL	< 3 pg/mL	5 x 96 well plates	ab48488
IL12 p70	Hu	6.25 pg/mL - 200 pg/mL	< 3 pg/mL	10 x 96 well plates	ab48489
IL12 p70	Hu	6.25 pg/mL - 200 pg/mL	< 3 pg/mL	15 x 96 well plates	ab48800
IL12 p70	Hu	6.25 pg/mL - 200 pg/mL	< 3 pg/mL	20 x 96 well plates	ab48802
IL13	Hu	3.12 pg/mL - 100 pg/mL	< 1.5 pg/mL	5 x 96 well plates	ab47353
IL13	Hu	3.12 pg/mL - 100 pg/mL	< 1.5 pg/mL	10 x 96 well plates	ab47447
IL13	Hu	3.12 pg/mL - 100 pg/mL	< 1.5 pg/mL	15 x 96 well plates	ab48883
IL13	Hu	3.12 pg/mL - 100 pg/mL	< 1.5 pg/mL	20 x 96 well plates	ab48884
IL17	Hu	3.125 pg/mL - 100 pg/mL	< 3 pg/mL	5 x 96 well plates	ab83707
IL17	Hu	3.125 pg/mL - 100 pg/mL	< 3 pg/mL	10 x 96 well plates	ab83708
Interferon gamma	Hu	12.5 pg/mL - 400 pg/mL	< 5 pg/mL	5 x 96 well plates	ab48490
Interferon gamma	Hu	12.5 pg/mL - 400 pg/mL	< 5 pg/mL	10 x 96 well plates	ab48492
Interferon gamma	Hu	12.5 pg/mL - 400 pg/mL	< 5 pg/mL	15 x 96 well plates	ab48803
Interferon gamma	Hu	12.5 pg/ml - 400 pg/ml	< 5 pg/mL	20 x 96 well plates	ab48804
Interferon gamma	Ms	31.25 pg/mL - 1000 pg/mL	< 15 pg/mL	5 x 96 well plates	ab47618
Interferon gamma	Ms	31.25 pg/mL - 1000 pg/mL	< 15 pg/mL	10 x 96 well plates	ab47619
Interferon gamma	Ms	31.25 pg/mL - 1000 pg/mL	< 15 pg/mL	15 x 96 well plates	ab48904
Interferon gamma	Ms	31.25 pg/mL - 1000 pg/mL	< 15 pg/mL	20 x 96 well plates	ab48906
Interferon gamma	Rt	31.25 pg/mL - 1000 pg/mL	< 10 pg/mL	5 x 96 well plates	ab47620
Interferon gamma	Rt	31.25 pg/mL - 1000 pg/mL	< 10 pg/mL	10 x 96 well plates	ab47622
Interferon gamma	Rt	31.25 pg/mL - 1000 pg/mL	< 10 pg/mL	15 x 96 well plates	ab48907
Interferon gamma	Rt	31.25 pg/mL - 1000 pg/mL	< 10 pg/mL	20 x 96 well plates	ab48909
Perforin	Hu	62.5 pg/mL - 2000 pg/mL	< 40 pg/mL	5 x 96 well plates	ab83709
Perforin	Hu	62.5 pg/mL - 2000 pg/mL	< 40 pg/mL	10 x 96 well plates	ab83711
Syndecan	Hu	8 ng/mL - 256 ng/mL	< 2.56 ng/mL	5 x 96 well plates	ab47352
Syndecan	Hu	8 ng/mL - 256 ng/mL	< 2.56 ng/mL	10 x 96 well plates	ab47445
Syndecan	Hu	8 ng/mL - 256 ng/mL	< 2.56 ng/mL	15 x 96 well plates	ab48881
Syndecan	Hu	8 ng/mL - 256 ng/mL	< 2.56 ng/mL	20 x 96 well plates	ab48882
Thrombomodulin	Hu	0.625 ng/mL - 20 ng/mL	< 0.380 ng/mL	5 x 96 well plates	ab47358
Thrombomodulin	Hu	0.625 ng/mL - 20 ng/mL	< 0.380 ng/mL	10 x 96 well plates	ab47589
Thrombomodulin	Hu	0.625 ng/mL - 20 ng/mL	< 0.380 ng/mL	15 x 96 well plates	ab48896
Thrombomodulin	Hu	0.625 ng/mL - 20 ng/mL	< 0.380 ng/mL	20 x 96 well plates	ab48897
TNF alpha	Hu	25 pg/mL - 800 pg/mL	< 10 pg/mL	5 x 96 well plates	ab47347
TNF alpha	Hu	25 pg/mL - 800 pg/mL	< 10 pg/mL	10 x 96 well plates	ab47359
TNF alpha	Hu	25 pg/mL - 800 pg/mL	< 10 pg/mL	15 x 96 well plates	ab48806
TNF alpha	Rt	31.25 pg/mL - 1000 pg/mL	< 15 pg/mL	5 x 96 well plates	ab48419
TNF alpha	Rt	31.25 pg/mL - 1000 pg/mL	< 15 pg/mL	10 x 96 well plates	ab48420
TNF alpha	Rt	31.25 pg/mL - 1000 pg/mL	< 15 pg/mL	15 x 96 well plates	ab48910

Scientific support: www.abcam.com/technical | ELISA resources: www.abcam.com/elisa
Species abbreviations key: Hu: Human | Ms: Mouse | Mcq: Macaque | Mk: Monkey | Rt: Rat

ELIPAIR kits

Target	Reacts with	Range	Sensitivity	Enough Reagents for	Catalog # www.abcam.com/...
TNF alpha	Rt	31.25 pg/mL - 1000 pg/mL	< 15 pg/mL	20 x 96 well plates	ab48911
VCAM1	Hu	1.56 ng/mL - 50 ng/mL	< 0.6 ng/mL	5 x 96 well plates	ab47355
VCAM1	Hu	1.56 ng/mL - 50 ng/mL	< 0.6 ng/mL	10 x 96 well plates	ab47460
VCAM1	Hu	1.56 ng/mL - 50 ng/mL	< 0.6 ng/mL	15 x 96 well plates	ab48887
VCAM1	Hu	1.56 ng/mL - 50 ng/mL	< 0.6 ng/mL	20 x 96 well plates	ab48888



ELISPOT

Standard ELISPOT and High Sensitivity ELISPOT kits

Choose ELISPOT kits for the analysis of cytokines and other soluble molecule production and secretion from T-cells at a single cell level.

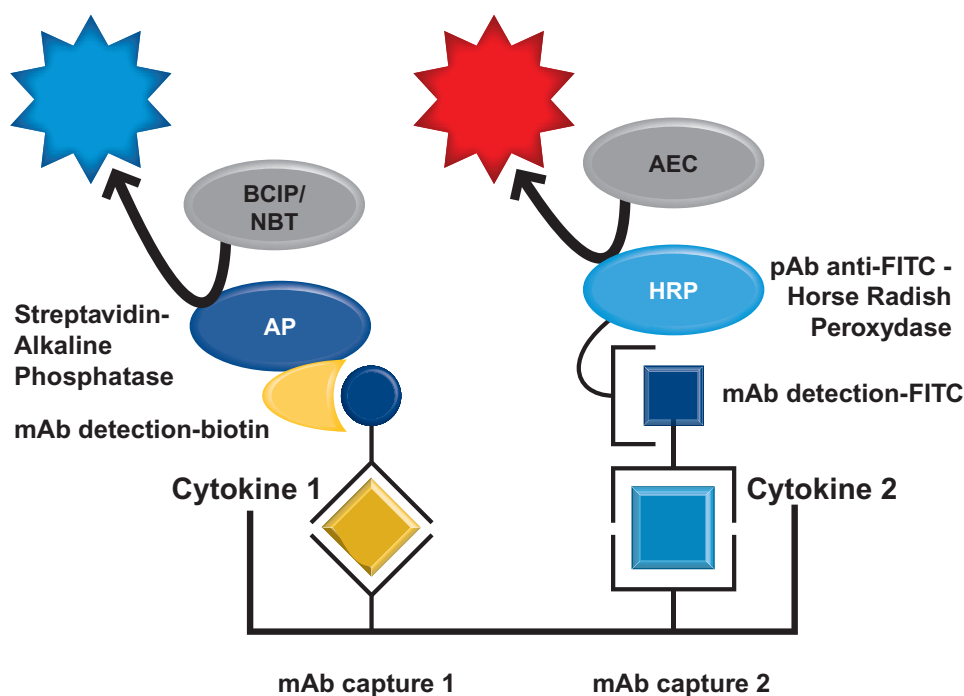
ELISPOT assays allow visualization of the secretory product of individual activated or responding cells. Each spot that develops in the assay represents a single reactive cell. Thus, the ELISPOT assay provides both qualitative (type of immune protein) and quantitative (number of responding cells) data.

Using sandwich ELISA technology, ELISPOT and Dual ELISPOT can detect secreted cytokines and measure the frequency of single cells that simultaneously produce multiple cytokines or other effector molecules.

ELISPOT reagents are available in a number of formats from pre-coated kits for easy analysis and increased throughput to Antibody Matched Pairs.

ELISPOT assays provide:

- High sensitivity
- Fast Procedure
- Accuracy & Reliability
- No cross reactivity



Cells are incubated in 96 well plates on a membrane previously coated with primary antibodies (mAb capture 1 and 2). Proteins secreted by these cells bind to the closest primary antibody (cytokine 1 and 2). Application of the detection antibodies and subsequent development will result in a colored spot at the site of the secreting cell, the Spot Forming Cell (SFC; where one spot = one cell).

ELISPOT kits

Target	Reacts with	Number of Precoated plates/ Enough reagents for	Non-sterile PVDF plates provided	Catalog # www.abcam.com/...
native Fas Ligand	Hu	10 x 96 well plates	✓	ab46607
IL13	Hu	15 x 96 well plates		ab48701
Fas Ligand	Hu	15 x 96 well plates		ab48691
Fas Ligand	Hu	20 x 96 well plates		ab48692
native Fas Ligand	Hu	1 x 96 well plate	✓ (Precoated)	ab62920
native Fas Ligand	Hu	5 x 96 well plates	✓ (Precoated)	ab62921
native Fas Ligand	Hu	5 x 96 well plates	✓	ab46605
native Fas Ligand	Hu	5 x 96 well plates		ab46577
native Fas Ligand	Hu	10 x 96 well plates	✓	ab46607
native Fas Ligand	Hu	10 x 96 well plates		ab46606
native Fas Ligand matched pair	Hu	10 x 96 well plates		ab46630
Granzyme B	Hu	5 x 96 well plates		ab46581
Granzyme B	Hu	15 x 96 well plates		ab48705
Granzyme B	Hu	20 x 96 well plates		ab48706
native Granzyme B	Hu	1 x 96 well plate	(Precoated)	ab62922
native Granzyme B	Hu	5 x 96 well plates	(Precoated)	ab62923
native Granzyme B	Hu	5 x 96 well plates	✓	ab46617
native Granzyme B	Hu	10 x 96 well plates	✓	ab46619
native Granzyme B	Hu	10 x 96 well plates		ab46618
native Granzyme B matched pair	Hu	10 x 96 well plates		ab46634
IL1 beta	Hu	15 x 96 well plates		ab48694
IL1 beta	Hu	20 x 96 well plates		ab48698
native IL1 beta	Hu	10 x 96 well plates		ab46631
(pro and mature) IL1 beta	Hu	1 x 96 well plate	✓ (Precoated)	ab62924
(pro and mature) IL1 beta	Hu	5 x 96 well plates	✓ (Precoated)	ab62925
(pro and mature) IL1 beta	Hu	5 x 96 well plates	✓	ab46608
(pro and mature) IL1 beta	Hu	5 x 96 well plates		ab46578
(pro and mature) IL1 beta	Hu	10 x 96 well plates	✓	ab46610
(pro and mature) IL1 beta	Hu	10 x 96 well plates		ab46609
IL2	Hu	15 x 96 well plates		ab48677
IL2	Hu	20 x 96 well plates		ab48678
IL2	Ms	15 x 96 well plates		ab48709
IL2	Ms	20 x 96 well plates		ab48713
native IL2	Hu	1 x 96 well plate	✓ (Precoated)	ab62926
native IL2	Hu	5 x 96 well plates	✓ (Precoated)	ab62927
native IL2	Hu, Mk	5 x 96 well plates	✓	ab46554
native IL2	Hu, Mk	5 x 96 well plates		ab46546
native IL2	Hu, Mk	10 x 96 well plates	✓	ab46556
native IL2	Hu, Mk	10 x 96 well plates		ab46555
native IL2 matched pair	Hu	10 x 96 well plates		ab46598
native IL2	Ms	5 x 96 well plates	✓ (Precoated)	ab46624
native IL2	Ms	5 x 96 well plates		ab46623
native IL2	Ms	10 x 96 well plates	✓	ab46626
native IL2	Ms	10 x 96 well plates		ab46625
native IL2 matched pair	Ms	10 x 96 well plates		ab46636
IL4	Hu	15 x 96 well plates		ab48679
IL4	Hu	20 x 96 well plates		ab48680
native IL4	Hu	1 x 96 well plate	✓ (Precoated)	ab62929
native IL4	Hu	5 x 96 well plates	✓ (Precoated)	ab62930
native IL4	Hu	5 x 96 well plates	✓	ab46557
native IL4	Hu	5 x 96 well plates		ab46547
native IL4	Hu	10 x 96 well plates	✓	ab46559
native IL4	Hu	10 x 96 well plates		ab46558
native IL4 matched pair	Hu	10 x 96 well plates		ab46599
IL5	Hu	15 x 96 well plates		ab48699
IL5	Hu	20 x 96 well plates		ab48700
native and recombinant IL5	Hu	1 x 96 well plate	✓ (Precoated)	ab62931
native and recombinant IL5	Hu	5 x 96 well plate	✓ (Precoated)	ab62934
native and recombinant IL5	Hu	5 x 96 well plates	✓	ab46611
native and recombinant IL5	Hu	5 x 96 well plates		ab46579

ELISPOT kits

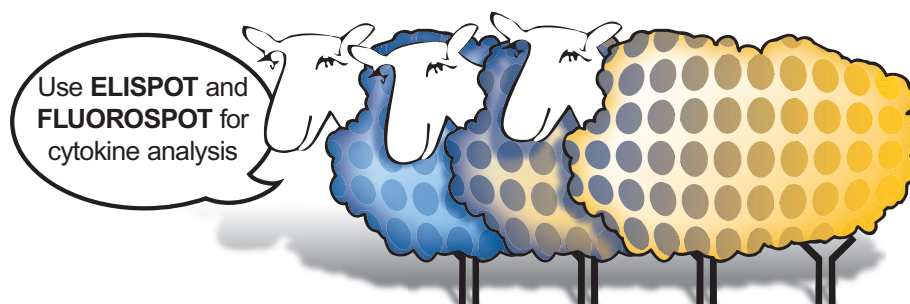
Target	Reacts with	Number of Precoated plates/ Enough reagents for	Non-sterile PVDF plates provided	Catalog # www.abcam.com/...
native and recombinant IL5	Hu	10 x 96 well plates	✓	ab46613
native and recombinant IL5	Hu	10 x 96 well plates		ab46612
native and recombinant IL5 matched pair	Hu	10 x 96 well plates		ab46632
IL6	Hu	15 x 96 well plates		ab48681
IL6	Hu	20 x 96 well plates		ab48682
native IL6	Hu	1 x 96 well plate	✓ (Precoated)	ab62932
native IL6	Hu	5 x 96 well plates	✓ (Precoated)	ab62936
native IL6	Hu	5 x 96 well plates	✓	ab46560
native IL6	Hu	5 x 96 well plates		ab46548
native IL6	Hu	10 x 96 well plates	✓	ab46562
native IL6	Hu	10 x 96 well plates		ab46561
native IL6 matched pair	Hu	10 x 96 well plates		ab46600
IL10	Hu	15 x 96 well plates		ab48683
IL10	Hu	20 x 96 well plates		ab48684
native IL10	Hu	1 x 96 well plate	✓ (Precoated)	ab62937
native IL10	Hu, Mk	5 x 96 well plates	✓	ab46563
native IL10	Hu, Mk	5 x 96 well plates		ab46549
native IL10	Hu, Mk	10 x 96 well plates	✓	ab46565
native IL10	Hu, Mk	10 x 96 well plates		ab46564
native IL10 matched pair	Hu	10 x 96 well plates		ab46601
Dual IL10 + IL2	Hu	5 x 96 well plates	✓	ab48456
Dual IL10 + IL2	Hu	5 x 96 well plates		ab48455
Dual IL10 + IL2	Hu	10 x 96 well plates	✓	ab48458
Dual IL10 + IL2	Hu	10 x 96 well plates		ab48457
Dual IL10 + IL2	Hu	15 x 96 well plates		ab48759
Dual IL10 + IL2	Hu	20 x 96 well plates		ab48760
Dual IL10 + IL4	Hu	5 x 96 well plates	✓	ab48426
Dual IL10 + IL4	Hu	5 x 96 well plates		ab46664
Dual IL10 + IL4	Hu	10 x 96 well plates	✓	ab48429
Dual IL10 + IL4	Hu	10 x 96 well plates		ab48428
Dual IL10 + IL4	Hu	15 x 96 well plates		ab48748
Dual IL10 + IL4	Hu	20 x 96 well plates		ab48749
native IL11	Hu	5 x 96 well plates	✓ (Precoated)	ab62938
IL12 p70	Hu	15 x 96 well plates		ab48689
IL12 p70	Hu	20 x 96 well plates		ab48690
native IL12, specific to p70 heterodimer	Hu	1 x 96 well plate	✓ (Precoated)	ab62939
native IL12, specific to p70 heterodimer	Hu	5 x 96 well plates	✓ (Precoated)	ab62940
native IL12, specific to p70 heterodimer	Hu	5 x 96 well plates	✓	ab46574
native IL12, specific to p70 heterodimer	Hu	5 x 96 well plates		ab46552
native IL12, specific to p70 heterodimer	Hu	10 x 96 well plates	✓	ab46576
native IL12, specific to p70 heterodimer	Hu	10 x 96 well plates		ab46575
native IL12, specific to p70 heterodimer matched pair	Hu	10 x 96 well plates		ab46602
IL13	Hu	15 x 96 well plates		ab48701
IL13	Hu	20 x 96 well plates		ab48704
native and recombinant IL13	Hu	1 x 96 well plate	✓ (Precoated)	ab62941
native and recombinant IL13	Hu	5 x 96 well plates	✓ (Precoated)	ab62942
native and recombinant IL13	Hu	5 x 96 well plates	✓	ab46614
native and recombinant IL13	Hu	5 x 96 well plates		ab46580
native and recombinant IL13	Hu	10 x 96 well plates	✓	ab46616
native and recombinant IL13	Hu	10x96 well plates		ab46615
native and recombinant IL13 matched pair	Hu	10 x 96 well plates		ab46633
IL17	Hu	5 x 96 well plates		ab83724
native IL17A	Hu	1 x 96 well plate	✓	ab83717
native IL17A	Hu	5 x 96 well plates	✓	ab83721
native IL17A	Hu	5 x 96 well plates		ab83712
native IL17A	Hu	10 x 96 well plates	✓	ab83722
native IL17A	Hu	10 x 96 well plates		ab83715
Interferon gamma	Hu	15 x 96 well plates		ab48687
Interferon gamma	Hu	20 x 96 well plates		ab48688

ELISPOT kits

Target	Reacts with	Number of Precoated plates/ Enough reagents for	Non-sterile PVDF plates provided	Catalog # www.abcam.com/...
Interferon gamma	Ms	15 x 96 well plates		ab48714
Interferon gamma	Ms	20 x 96 well plates		ab48715
Interferon gamma	Rt	15 x 96 well plates		ab48716
Interferon gamma	Rt	20 x 96 well plates		ab48717
native Interferon gamma	Hu	1 x 96 well plate	✓ (Precoated)	ab62899
native Interferon gamma	Hu	5 x 96 well plate	✓ (Precoated)	ab62918
native Interferon gamma	Hu, Mk	5 x 96 well plates	✓	ab46569
native Interferon gamma	Hu, Mk	5 x 96 well plates		ab46551
native Interferon gamma	Hu, Mk	10 x 96 well plates	✓	ab46571
native Interferon gamma	Hu, Mk	10 x 96 well plates		ab46570
native Interferon gamma matched pair	Hu	10 x 96 well plates		ab46604
native Interferon gamma	Ms	5 x 96 well plates	✓	ab46587
native Interferon gamma	Ms	5 x 96 well plates		ab46586
native Interferon gamma	Ms	10 x 96 well plates	✓	ab46589
native Interferon gamma	Ms	10 x 96 well plates		ab46588
native Interferon gamma matched pair	Ms	10x96 well plates		ab46637
native Interferon gamma	Rt	5 x 96 well plates	✓	ab46591
native Interferon gamma	Rt	5 x 96 well plates		ab46590
native Interferon gamma	Rt	10 x 96 well plates	✓	ab46593
native Interferon gamma	Rt	10 x 96 well plates		ab46592
native Interferon gamma matched pair	Rt	10 x 96 well plates		ab46638
Interferon Gamma + Granzyme B	Hu	5 x 96 well plates	✓	ab48464
Interferon Gamma + Granzyme B	Hu	5 x 96 well plates		ab48463
Interferon Gamma + Granzyme B	Hu	10 x 96 well plates	✓	ab48466
Interferon Gamma + Granzyme B	Hu	10 x 96 well plates		ab48465
Interferon Gamma + Granzyme B	Hu	15 x 96 well plates		ab48763
Interferon Gamma + Granzyme B	Hu	20 x 96 well plates		ab48764
Interferon Gamma + IL2	Hu	5 x 96 well plates	✓	ab48448
Interferon Gamma + IL2	Hu	5 x 96 well plates		ab48447
Interferon Gamma + IL2	Hu	10 x 96 well plates	✓	ab48450
Interferon Gamma + IL2	Hu	10 x 96 well plates		ab48449
Interferon Gamma + IL2	Hu	15 x 96 well plates		ab48753
Interferon Gamma + IL2	Hu	20 x 96 well plates		ab48754
Interferon gamma + IL4	Hu	5 x 96 well plates	✓	ab46649
Interferon gamma + IL4	Hu	5 x 96 well plates		ab46648
Interferon gamma + IL4	Hu	10 x 96 well plates	✓	ab46651
Interferon gamma + IL4	Hu	10 x 96 well plates		ab46650
Interferon gamma + IL4	Hu	15 x 96 well plates		ab48726
Interferon gamma + IL4	Hu	20 x 96 well plates		ab48735
Interferon gamma + IL5	Hu	5 x 96 well plates	✓	ab46658
Interferon gamma + IL5	Hu	5 x 96 well plates		ab46655
Interferon gamma + IL5	Hu	10 x 96 well plates	✓	ab46660
Interferon gamma + IL5	Hu	10 x 96 well plates		ab46659
Interferon gamma + IL5	Hu	15 x 96 well plates		ab48743
Interferon gamma + IL5	Hu	20 x 96 well plates		ab48744
Interferon gamma + IL10	Hu	5 x 96 well plates	✓	ab46642
Interferon gamma + IL10	Hu	5 x 96 well plates		ab46629
Interferon gamma + IL10	Hu	10 x 96 well plates	✓	ab46644
Interferon gamma + IL10	Hu	10 x 96 well plates		ab46643
Interferon gamma + IL10	Hu	15 x 96 well plates		ab48721
Interferon gamma + IL10	Hu	20 x 96 well plates		ab48722
Perforin	Hu	1 x 96 well plate	✓ (Precoated)	ab62943
Perforin	Hu	10 x 96 well plates		ab46621
Perforin	Hu	15 x 96 well plates		ab48707
Perforin	Hu	20 x 96 well plates		ab48708
native Perforin	Hu	5 x 96 well plates	✓ (Precoated)	ab62944
native Perforin	Hu	5 x 96 well plates	✓	ab46620
native Perforin	Hu	5 x 96 well plates		ab46582
native Perforin	Hu	10 x 96 well plates	✓	ab46622
native Perforin matched pair	Hu	10 x 96 well plates		ab46635

ELISPOT kits

Target	Reacts with	Number of Precoated plates/ Enough reagents for	Non-sterile PVDF plates provided	Catalog # www.abcam.com/...
TNF alpha	Hu	15 x 96 well plates		ab48685
TNF alpha	Hu	20 x 96 well plates		ab48686
TNF alpha	Rt	15 x 96 well plates		ab48718
TNF alpha	Rt	20 x 96 well plates		ab48719
native TNF alpha	Hu	1 x 96 well plate	✓ (Precoated)	ab62945
native TNF alpha	Hu	5 x 96 well plates	✓ (Precoated)	ab62946
native TNF alpha	Hu, Mcq	5 x 96 well plates	✓	ab46566
native TNF alpha	Hu, Goose, Mcq	5 x 96 well plates		ab46550
native TNF alpha	Hu, Mcq	10 x 96 well plates	✓	ab46568
native TNF alpha	Hu, Mcq	10 x 96 well plates		ab46567
native TNF alpha matched pair	Hu	10 x 96 well plates		ab46603
native TNF alpha	Rt	5 x 96 well plates	✓	ab46595
native TNF alpha	Rt	5 x 96 well plates		ab46594
native TNF alpha	Rt	10 x 96 well plates	✓	ab46597
native TNF alpha	Rt	10 x 96 well plates		ab46596
native TNF alpha matched pair	Rt	10 x 96 well plates		ab46639

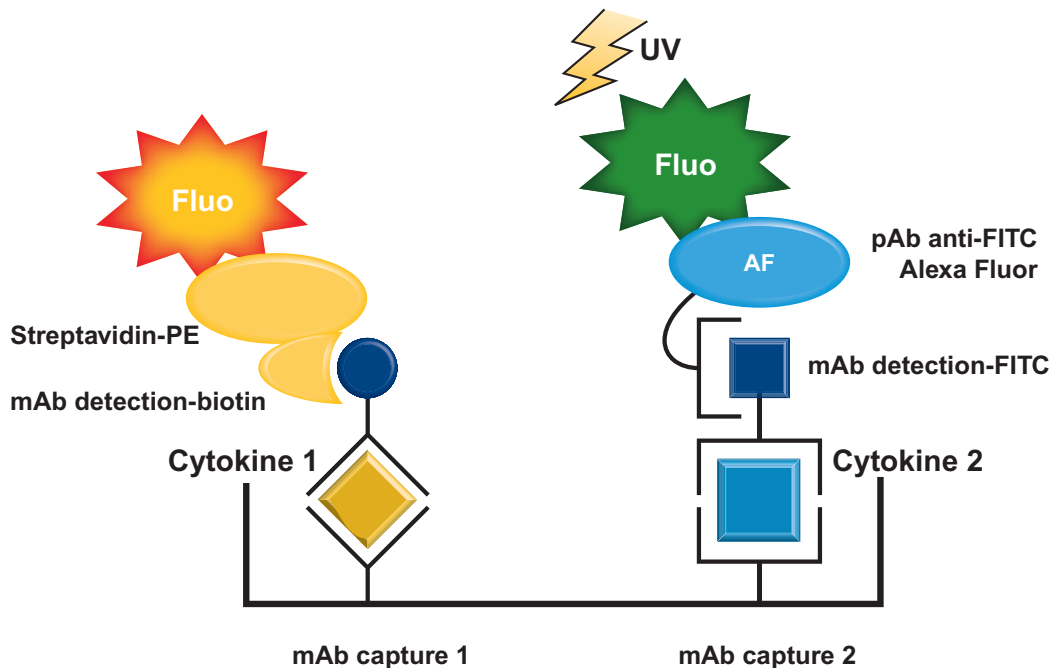


FLUOROSPOT

Standard FLUOROSPOT and High Sensitivity FLUOROSPOT kits

FLUOROSPOT uses the same ELISA principle as ELISPOT, employing sandwich ELISA technology, but with fluorescence detection instead of chromogenic detection. Used in the analysis of cytokines and other soluble molecule production from secreting T-cells, FLUOROSPOT can identify products at a single cell level.

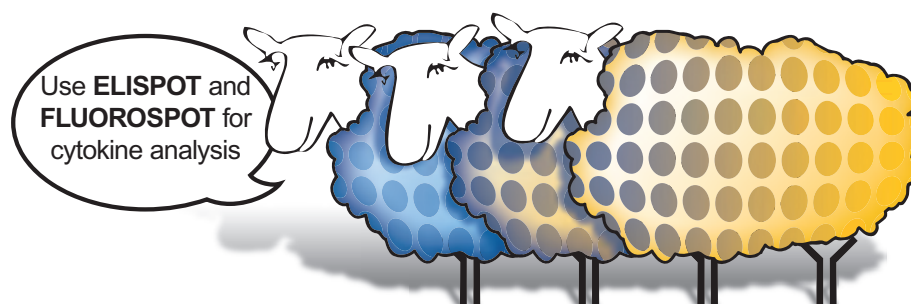
Dual FLUOROSPOT kits come either in a pre-coated kit format or Antibody Matched Pairs format for the simultaneous study of two proteins and their interactions.



Cells are incubated in 96 well plates on a membrane previously coated with primary antibodies (mAb capture 1 and 2). Proteins secreted by these cells bind to the closest primary antibody (cytokine 1 and 2). Application of the detection antibodies and subsequent development will result in a fluorescent spot at the site of the secreting cell, the Spot Forming Cell (SFC; where one spot = one cell).

FLUOROSPOT kits

Target	Reacts with	Enough reagents for	Non-sterile PVDF plates provided	Catalog # www.abcam.com/...
IL10 + IL2	Hu	5 x 96 well plates		ab48459
IL10 + IL2	Hu	5 x 96 well plates	✓	ab48460
IL10 + IL2	Hu	10 x 96 well plates		ab48461
IL10 + IL2	Hu	10 x 96 well plates	✓	ab48462
IL10 + IL2	Hu	15 x 96 well plates		ab48761
IL10 + IL2	Hu	20 x 96 well plates		ab48762
IL10 + IL4	Hu	5 x 96 well plates		ab46656
IL10 + IL4	Hu	5 x 96 well plates	✓	ab46661
IL10 + IL4	Hu	10 x 96 well plates		ab46662
IL10 + IL4	Hu	10 x 96 well plates	✓	ab46663
IL10 + IL4	Hu	15 x 96 well plates		ab48745
Interferon Gamma + Granzyme B	Hu	5 x 96 well plates		ab48467
Interferon Gamma + Granzyme B	Hu	5 x 96 well plates	✓	ab48468
Interferon Gamma + Granzyme B	Hu	10 x 96 well plates		ab48469
Interferon Gamma + Granzyme B	Hu	15 x 96 well plates		ab48765
Interferon Gamma + Granzyme B	Hu	20 x 96 well plates		ab48766
Interferon gamma + IL10	Hu	5 x 96 well plates		ab46628
Interferon gamma + IL10	Hu	5 x 96 well plates	✓	ab46652
Interferon gamma + IL10	Hu	10 x 96 well plates		ab46653
Interferon gamma + IL10	Hu	10 x 96 well plates	✓	ab46654
Interferon gamma + IL10	Hu	15 x 96 well plates		ab48741
Interferon gamma + IL10	Hu	20 x 96 well plates		ab48742
Interferon Gamma + IL2	Hu	5 x 96 well plates		ab48451
Interferon Gamma + IL2	Hu	5 x 96 well plates	✓	ab48452
Interferon Gamma + IL2	Hu	10 x 96 well plates		ab48453
Interferon Gamma + IL2	Hu	10 x 96 well plates	✓	ab48454
Interferon Gamma + IL2	Hu	15 x 96 well plates		ab48756
Interferon Gamma + IL2	Hu	20 x 96 well plates		ab48758
Interferon gamma + IL4	Hu	5 x 96 well plates		ab46640
Interferon gamma + IL4	Hu	5 x 96 well plates	✓	ab46645
Interferon gamma + IL4	Hu	10 x 96 well plates		ab46646
Interferon gamma + IL4	Hu	10 x 96 well plates	✓	ab46647
Interferon gamma + IL4	Hu	15 x 96 well plates		ab48723
Interferon gamma + IL4	Hu	20 x 96 well plates		ab48724
Interferon gamma + IL5	Hu	5 x 96 well plates		ab48430
Interferon gamma + IL5	Hu	5 x 96 well plates	✓	ab48431
Interferon gamma + IL5	Hu	10 x 96 well plates		ab48432
Interferon gamma + IL5	Hu	10 x 96 well plates	✓	ab48433
Interferon gamma + IL5	Hu	15 x 96 well plates		ab48751
Interferon gamma + IL5	Hu	20 x 96 well plates		ab48752



SECONDARY ANTIBODIES

Secondaries

Product name	Applications	Catalog # www.abcam.com/...
Donkey F(ab) polyclonal Secondary Antibody to Goat IgG - H&L (Biotin)	ELISA, ICC/IF, IHC-P, WB	98827
Donkey F(ab) polyclonal Secondary Antibody to Rabbit IgG - H&L (Biotin)	ELISA, ICC, IHC-P, WB	102281
Donkey F(ab') ₂ polyclonal Secondary Antibody to Human IgG - H&L (Biotin), pre-adsorbed	ELISA, ICC, IHC-P, WB	102432
Donkey F(ab') ₂ polyclonal Secondary Antibody to Mouse IgG - H&L (Biotin)	ELISA, ICC/IF, IHC-P, WB	98663
Donkey F(ab') ₂ polyclonal Secondary Antibody to Rat IgG - H&L (Biotin)	ELISA, ICC, IHC-P, WB	102194
Donkey F(ab') ₂ polyclonal Secondary Antibody to Rat IgG - H&L (Biotin), pre-adsorbed	ELISA, ICC/IF, IHC-P, WB	102231
Donkey polyclonal Secondary Antibody to Goat IgG - H&L (Biotin)	ELISA, ICC/IF, IHC-P, WB	97108
Donkey polyclonal Secondary Antibody to Goat IgG - H&L (Biotin), pre-adsorbed	ELISA, ICC/IF, IHC-P, WB	97113
Donkey polyclonal Secondary Antibody to Human IgG - H&L (Biotin)	ELISA, ICC, IHC-P, WB	102408
Donkey polyclonal Secondary Antibody to Human IgG - H&L (Biotin), pre-adsorbed	ELISA, ICC, IHC-P, WB	102423
Donkey polyclonal Secondary Antibody to Mouse IgG - H&L (Biotin)	ELISA, ICC/IF, IHC-P, WB	97028
Donkey polyclonal Secondary Antibody to Mouse IgG - H&L (Biotin), pre-adsorbed	ELISA, ICC/IF, IHC-P, WB	98793
Donkey polyclonal Secondary Antibody to Rabbit IgG - H&L (Biotin)	ELISA, ICC/IF, IHC-P, WB	97062
Donkey polyclonal Secondary Antibody to Rabbit IgG - H&L (Biotin), pre-adsorbed	ELISA, ICC/IF, IHC-P, WB	97083
Donkey polyclonal Secondary Antibody to Rabbit IgG - H&L (Biotin), pre-adsorbed	ELISA, ICC/IF, IHC-P, WB	98497
Donkey polyclonal Secondary Antibody to Rat IgG - H&L (Biotin)	ELISA, ICC, IHC-P, WB	102180
Donkey polyclonal Secondary Antibody to Rat IgG - H&L (Biotin), pre-adsorbed	ELISA, ICC, IHC-P, WB	102216
Donkey polyclonal Secondary Antibody to Rat IgG - H&L (Biotin), pre-adsorbed	ELISA, ICC, IHC-P, WB	102259
Donkey polyclonal Secondary Antibody to Sheep IgG - H&L (Biotin)	ELISA, ICC/IF, IHC-P, WB	97123
Goat F(ab) polyclonal Secondary Antibody to Rabbit IgG - H&L (Biotin)	ELISA, ICC, IHC-P, WB	102285
Goat F(ab) polyclonal Secondary Antibody to Rat IgG - H&L (Biotin)	ELISA, ICC/IF, IHC-P, WB	102189
Goat F(ab') ₂ polyclonal Secondary Antibody to Human IgG - (Fab') ₂ (Biotin)	ELISA, ICC/IF, IHC-P, WB	98533
Goat F(ab') ₂ polyclonal Secondary Antibody to Human IgG - (Fab') ₂ (Biotin), pre-adsorbed	ELISA, ICC/IF, IHC-P, WB	98599
Goat F(ab') ₂ polyclonal Secondary Antibody to Human IgG - Fc (Biotin)	ELISA, ICC/IF, IHC-P, WB	98528
Goat F(ab') ₂ polyclonal Secondary Antibody to Human IgG - Fc (Biotin), pre-adsorbed	ELISA, ICC/IF, IHC-P, WB	98589
Goat F(ab') ₂ polyclonal Secondary Antibody to Human IgG - H&L (Biotin)	ELISA, ICC/IF, IHC-P, WB	98523
Goat F(ab') ₂ polyclonal Secondary Antibody to Human IgG - H&L (Biotin), pre-adsorbed	ELISA, ICC/IF, IHC-P, WB	98579
Goat F(ab') ₂ polyclonal Secondary Antibody to Mouse IgG - (Fab') ₂ (Biotin)	ELISA, ICC/IF, IHC-P, WB	98657
Goat F(ab') ₂ polyclonal Secondary Antibody to Mouse IgG - (Fab') ₂ (Biotin), pre-adsorbed	ELISA, ICC/IF, IHC-P, WB	98756
Goat F(ab') ₂ polyclonal Secondary Antibody to Mouse IgG - Fc (Biotin)	ELISA, ICC/IF, IHC-P, WB	98646
Goat F(ab') ₂ polyclonal Secondary Antibody to Mouse IgG - Fc (Biotin), pre-adsorbed	ELISA, ICC/IF, IHC-P, WB	98735
Goat F(ab') ₂ polyclonal Secondary Antibody to Mouse IgG - H&L (Biotin)	ELISA, ICC/IF, IHC-P, WB	98636
Goat F(ab') ₂ polyclonal Secondary Antibody to Mouse IgG - H&L (Biotin), pre-adsorbed	ELISA, ICC/IF, IHC-P, WB	98725
Goat F(ab') ₂ polyclonal Secondary Antibody to Mouse IgG+IgM+IgA - H&L (Biotin), pre-adsorbed	ELISA, ICC, IHC-P, WB	102451
Goat F(ab') ₂ polyclonal Secondary Antibody to Mouse IgM - mu chain (Biotin)	ELISA, ICC/IF, IHC-P, WB	98652
Goat F(ab') ₂ polyclonal Secondary Antibody to Mouse IgM - mu chain (Biotin), pre-adsorbed	ELISA, ICC/IF, IHC-P, WB	98745
Goat F(ab') ₂ polyclonal Secondary Antibody to Rabbit IgG - (Fab') ₂ (Biotin)	ELISA, ICC, IHC-P, WB	102277
Goat F(ab') ₂ polyclonal Secondary Antibody to Rabbit IgG - (Fab') ₂ (Biotin), pre-adsorbed	ELISA, ICC, IHC-P, WB	102290
Goat F(ab') ₂ polyclonal Secondary Antibody to Rabbit IgG - Fc (Biotin)	ELISA, ICC/IF, IHC-P, WB	98434
Goat F(ab') ₂ polyclonal Secondary Antibody to Rabbit IgG - Fc (Biotin), pre-adsorbed	ELISA, ICC/IF, IHC-P, WB	98479
Goat F(ab') ₂ polyclonal Secondary Antibody to Rabbit IgG - H&L (Biotin)	ELISA, ICC/IF, IHC-P, WB	98429
Goat F(ab') ₂ polyclonal Secondary Antibody to Rabbit IgG - H&L (Biotin), pre-adsorbed	ELISA, ICC/IF, IHC-P, WB	98470
Goat F(ab') ₂ polyclonal Secondary Antibody to Rabbit IgG - H&L (Biotin), pre-adsorbed	ELISA, ICC/IF, IHC-P, WB	98506
Goat F(ab') ₂ polyclonal Secondary Antibody to Rat IgG - (Fab') ₂ (Biotin)	ELISA, ICC/IF, IHC-P, WB	102185
Goat F(ab') ₂ polyclonal Secondary Antibody to Rat IgG - (Fab') ₂ (Biotin), pre-adsorbed	ELISA, ICC, IHC-P, WB	102221
Goat F(ab') ₂ polyclonal Secondary Antibody to Rat IgG - Fc (Biotin)	ELISA, ICC/IF, IHC-P, WB	98362
Goat F(ab') ₂ polyclonal Secondary Antibody to Rat IgG - Fc (Biotin), pre-adsorbed	ELISA, ICC/IF, IHC-P, WB	98404
Goat F(ab') ₂ polyclonal Secondary Antibody to Rat IgG - H&L (Biotin)	ELISA, ICC/IF, IHC-P, WB	98357
Goat F(ab') ₂ polyclonal Secondary Antibody to Rat IgG - H&L (Biotin), pre-adsorbed	ELISA, ICC, IHC-P, WB	98395
Goat polyclonal Secondary Antibody to Chicken IgY - H&L (Biotin)	ELISA, ICC/IF, IHC-P, WB	97133
Goat polyclonal Secondary Antibody to Chicken IgY - H&L (Biotin), pre-adsorbed	ELISA, ICC/IF, IHC-P, WB	97143
Goat polyclonal Secondary Antibody to Cow IgG - H&L (Biotin)	ELISA, ICC, IHC-P, WB	102152
Goat polyclonal Secondary Antibody to Cow IgG - H&L (Biotin), pre-adsorbed	ELISA, ICC, IHC-P, WB	102161
Goat polyclonal Secondary Antibody to Donkey IgG - H&L (Biotin)	ELISA, ICC/IF, IHC-P, WB	98819

Secondaries

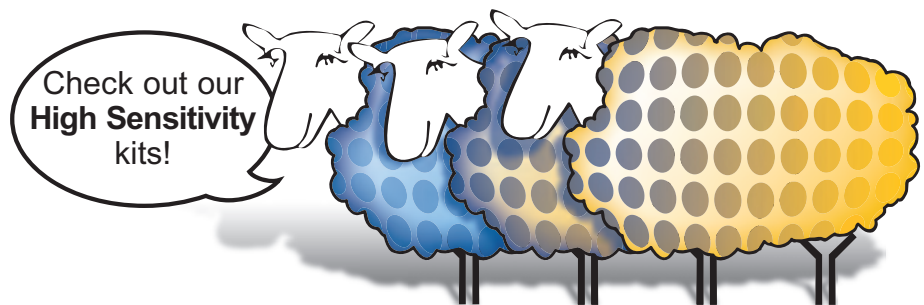
Product name	Applications	Catalog # www.abcam.com/...
Goat polyclonal Secondary Antibody to Guinea pig IgG - Fc (Biotin)	ELISA, ICC, IHC-P, WB	102363
Goat polyclonal Secondary Antibody to Guinea pig IgG - H&L (Biotin)	ELISA, ICC/IF, IHC-P, WB	97153
Goat polyclonal Secondary Antibody to Guinea pig IgG - H&L (Biotin), pre-adsorbed	ELISA, ICC/IF, IHC-P, WB	102368
Goat polyclonal Secondary Antibody to Horse IgG - H&L (Biotin)	ELISA, ICC, IHC-P, WB	102390
Goat polyclonal Secondary Antibody to Human IgA - alpha chain (Biotin)	ELISA, ICC/IF, IHC-P, WB	97213
Goat polyclonal Secondary Antibody to Human IgA - alpha chain (Biotin), pre-adsorbed	ELISA, ICC/IF, IHC-P, WB	98552
Goat polyclonal Secondary Antibody to Human IgG - (Fab)'2 specific (Biotin), pre-adsorbed	ELISA, Flow Cyt, IHC-Fr, WB	64666
Goat polyclonal Secondary Antibody to Human IgG - Fc (Biotin)	ELISA, ICC/IF, IHC-P, WB	97223
Goat polyclonal Secondary Antibody to Human IgG - Fc (Biotin), pre-adsorbed	ELISA, ICC/IF, IHC-P, WB	98561
Goat polyclonal Secondary Antibody to Human IgG - Fc (Biotin), pre-adsorbed	ELISA, ICC/IF, IHC-P, WB	98618
Goat polyclonal Secondary Antibody to Human IgG - H&L (Biotin)	ELISA, ICC/IF, IHC-P, WB	97163
Goat polyclonal Secondary Antibody to Human IgG - H&L (Biotin), pre-adsorbed	ELISA, ICC/IF, IHC-P, WB	97168
Goat polyclonal Secondary Antibody to Human IgG - H&L (Biotin), pre-adsorbed	ELISA, ICC/IF, IHC-P, WB	98627
Goat polyclonal Secondary Antibody to Human IgG+IgM - H&L (Biotin)	ELISA, ICC, IHC-P, WB	102413
Goat polyclonal Secondary Antibody to Human IgG+IgM+IgA - H&L (Biotin)	ELISA, ICC/IF, IHC-P, WB	102418
Goat polyclonal Secondary Antibody to Human IgM - mu chain (Biotin)	ELISA	49655
Goat polyclonal Secondary Antibody to Human IgM - mu chain (Biotin)	ELISA, ICC/IF, IHC-P, WB	97203
Goat polyclonal Secondary Antibody to Human IgM - mu chain (Biotin), pre-adsorbed	ELISA, ICC/IF, IHC-P, WB	98543
Goat polyclonal Secondary Antibody to Mouse IgA - alpha chain (Biotin)	ELISA, ICC/IF, IHC-P, WB	97233
Goat polyclonal Secondary Antibody to Mouse IgA - alpha chain (Biotin), pre-adsorbed	ELISA, ICC/IF, IHC-P, WB	98682
Goat polyclonal Secondary Antibody to Mouse IgG - Fc (Biotin)	ELISA, ICC/IF, IHC-P, WB	97263
Goat polyclonal Secondary Antibody to Mouse IgG - Fc (Biotin), pre-adsorbed	ELISA, ICC/IF, IHC-P, WB	98711
Goat polyclonal Secondary Antibody to Mouse IgG - H&L (Biotin)	ELISA, ICC/IF, IHC-P, WB	97021
Goat polyclonal Secondary Antibody to Mouse IgG - H&L (Biotin), pre-adsorbed	ELISA, ICC/IF, IHC-P, WB	97033
Goat polyclonal Secondary Antibody to Mouse IgG - H&L (Biotin), pre-adsorbed	ELISA, ICC/IF, IHC-P, WB	98802
Goat polyclonal Secondary Antibody to Mouse IgG+IgM+IgA - H&L (Biotin)	ELISA, ICC, IHC-P, WB	102446
Goat polyclonal Secondary Antibody to Mouse IgG+IgM+IgA - H&L (Biotin), pre-adsorbed	ELISA, ICC, IHC-P, WB	102460
Goat polyclonal Secondary Antibody to Mouse IgG1 - heavy chain (Biotin)	ELISA, ICC/IF, IHC-P, WB	97238
Goat polyclonal Secondary Antibody to Mouse IgG1 - heavy chain (Biotin), pre-adsorbed	ELISA, ICC/IF, IHC-P, WB	98691
Goat polyclonal Secondary Antibody to Mouse IgG2a - heavy chain (Biotin)	ELISA, ICC/IF, IHC-P, WB	97243
Goat polyclonal Secondary Antibody to Mouse IgG2a - heavy chain (Biotin), pre-adsorbed	ELISA, ICC/IF, IHC-P, WB	98696
Goat polyclonal Secondary Antibody to Mouse IgG2b - heavy chain (Biotin)	ELISA, ICC/IF, IHC-P, WB	97248
Goat polyclonal Secondary Antibody to Mouse IgG2b - heavy chain (Biotin), pre-adsorbed	ELISA, ICC/IF, IHC-P, WB	98701
Goat polyclonal Secondary Antibody to Mouse IgG2c - heavy chain (Biotin)	ELISA, ICC/IF, IHC-P, WB	97253
Goat polyclonal Secondary Antibody to Mouse IgG2c - heavy chain (Biotin), pre-adsorbed	ELISA, ICC/IF, IHC-P, WB	98720
Goat polyclonal Secondary Antibody to Mouse IgG3 - heavy chain (Biotin)	ELISA, ICC/IF, IHC-P, WB	97258
Goat polyclonal Secondary Antibody to Mouse IgG3 - heavy chain (Biotin), pre-adsorbed	ELISA, ICC/IF, IHC-P, WB	98706
Goat polyclonal Secondary Antibody to Mouse IgM - mu chain (Biotin)	ELISA	49760
Goat polyclonal Secondary Antibody to Mouse IgM - mu chain (Biotin)	ELISA, ICC/IF, IHC-P, WB	97228
Goat polyclonal Secondary Antibody to Mouse IgM - mu chain (Biotin), pre-adsorbed	ELISA, ICC/IF, IHC-P, WB	98673
Goat polyclonal Secondary Antibody to Pig IgG - H&L (Biotin)	ELISA, ICC, IHC-P, WB	102129
Goat polyclonal Secondary Antibody to Rabbit IgA - alpha chain (Biotin)	ELISA, ICC/IF, IHC-P, WB	97188
Goat polyclonal Secondary Antibody to Rabbit IgA - alpha chain (Biotin), pre-adsorbed	ELISA, ICC/IF, IHC-P, WB	98444
Goat polyclonal Secondary Antibody to Rabbit IgG - Fc (Biotin)	ELISA, ICC/IF, IHC-P, WB	97198
Goat polyclonal Secondary Antibody to Rabbit IgG - H&L (Biotin)	ELISA, ICC/IF, IHC-P, WB	97049
Goat polyclonal Secondary Antibody to Rabbit IgG - H&L (Biotin), pre-adsorbed	ELISA, ICC/IF, IHC-P, WB	97067
Goat polyclonal Secondary Antibody to Rabbit IgG - H&L (Biotin), pre-adsorbed	ELISA, ICC/IF, IHC-P, WB	97073
Goat polyclonal Secondary Antibody to Rabbit IgM - mu chain (Biotin)	ELISA, ICC/IF, IHC-P, WB	97193
Goat polyclonal Secondary Antibody to Rabbit IgM - mu chain (Biotin), pre-adsorbed	ELISA, ICC/IF, IHC-P, WB	98453
Goat polyclonal Secondary Antibody to Rat IgA - alpha chain (Biotin)	ELISA, ICC/IF, IHC-P, WB	97183
Goat polyclonal Secondary Antibody to Rat IgA - alpha chain (Biotin), pre-adsorbed	ELISA, ICC/IF, IHC-P, WB	98376
Goat polyclonal Secondary Antibody to Rat IgG - Fc (Biotin), pre-adsorbed	ELISA, ICC/IF, IHC-P, WB	97088
Goat polyclonal Secondary Antibody to Rat IgG - H&L (Biotin)	ELISA, ICC/IF, IHC-P, WB	97055
Goat polyclonal Secondary Antibody to Rat IgG - H&L (Biotin), pre-adsorbed	ELISA, ICC/IF, IHC-P, WB	98385
Goat polyclonal Secondary Antibody to Rat IgG - H&L (Biotin), pre-adsorbed	ELISA, ICC/IF, IHC-P, WB	98414
Goat polyclonal Secondary Antibody to Rat IgM - mu chain (Biotin)	ELISA, ICC/IF, IHC-P, WB	97178
Goat polyclonal Secondary Antibody to Rat IgM - mu chain (Biotin), pre-adsorbed	ELISA, ICC/IF, IHC-P, WB	98367

Secondaries

Product name	Applications	Catalog # www.abcam.com/...
Goat polyclonal Secondary Antibody to Syrian Hamster IgG - H&L (Biotin)	ELISA, ICC, IHC-P, WB	102306
Goat polyclonal Secondary Antibody to Syrian Hamster IgG - H&L (Biotin), pre-adsorbed	ELISA, ICC/IF, IHC-P, WB	102316
Goat polyclonal Secondary Antibody to Turkey IgY (Biotin)	Dot, ELISA, ICC/IF, WB	46734
Mouse monoclonal [2A 8F4] Secondary Antibody to Rat IgG2a - heavy chain (Biotin)	ELISA, Flow Cyt, ICC/IF	99668
Mouse monoclonal [2A9] Secondary Antibody to Rabbit IgG - heavy chain (Biotin)	ELISA, Flow Cyt	99703
Mouse monoclonal [2C 8F1] Secondary Antibody to Rat IgG2c - heavy chain (Biotin)	ELISA, Flow Cyt, ICC/IF	99680
Mouse monoclonal [31-7-4] Secondary Antibody to Human IgG2 - Fc (Biotin)	Dot, ELISA, ICC/IF, IHC-Fr, WB	99780
Mouse monoclonal [4E3] Secondary Antibody to Human IgG1 - gamma chain (Biotin)	ELISA, ICC/IF	99775
Mouse monoclonal [A-1] Secondary Antibody to Chicken IgA - alpha chain (Biotin)	ELISA, Flow Cyt, ICC/IF, IHC-Fr, SDS-PAGE	99728
Mouse monoclonal [A9604D2] Secondary Antibody to Human IgA2 - Fc (Biotin)	Dot, ELISA, ICC, IHC-Fr, WB	99802
Mouse monoclonal [B3102E8] Secondary Antibody to Human IgE - Fc (Biotin)	Dot, ELISA, ICC, IHC-Fr, WB	99807
Mouse monoclonal [B3506B4] Secondary Antibody to Human IgA1 - Fc (Biotin)	Dot, ELISA, ICC, IHC-Fr, WB	99796
Mouse monoclonal [Clone BG-18] Secondary Antibody to Cow IgG1+IgG2 (Biotin), pre-adsorbed	Dot, ELISA, IHC-P	49583
Mouse monoclonal [G1 1C5] Secondary Antibody to Rat IgG1 - gamma chain (Biotin)	ELISA, ICC/IF	99662
Mouse monoclonal [G1 7E7] Secondary Antibody to Rat IgG1 - heavy chain (Biotin)	ELISA, Flow Cyt, ICC/IF	99656
Mouse monoclonal [G-1] Secondary Antibody to Chicken IgG - heavy chain (Biotin)	ELISA, Flow Cyt, ICC/IF, IHC-Fr	99724
Mouse monoclonal [H2] Secondary Antibody to Human IgG - Fc (Biotin)	Dot, ELISA, ICC, ICC/IF, IHC-Fr, WB	99766
Mouse monoclonal [HP6014] Secondary Antibody to Human IgG2 - Fd gamma (Biotin)	Dot, ELISA, ICC, ICC/IF, WB	99791
Mouse monoclonal [HP-6014] Secondary Antibody to Human IgG2 (Biotin)	I-ELISA	49974
Mouse monoclonal [HP6023] Secondary Antibody to Human IgG4 - gamma chain (Biotin)	Dot, ELISA, ICC/IF, IHC-Fr, WB	99818
Mouse monoclonal [HP6025] Secondary Antibody to Human IgG4 - Fc (Biotin)	Dot, ELISA, ICC, IHC-Fr, WB	99824
Mouse monoclonal [HP6029] Secondary Antibody to Human IgE - Fc (Biotin)	Dot, ELISA, ICC/IF, IHC-Fr, WB	99837
Mouse monoclonal [HP6050] Secondary Antibody to Human IgG3 - hinge heavy chain (Biotin)	Dot, ELISA, ICC, IHC-Fr, WB	99830
Mouse monoclonal [IADB6] Secondary Antibody to Human IgD - delta Fc (Biotin)	Dot, ELISA, ICC, ICC/IF, IHC-Fr, WB	99755
Mouse monoclonal [JDC-10] Secondary Antibody to Human IgG - heavy chain (Biotin)	Dot, ELISA, ICC, ICC/IF, IHC-Fr, WB	99760
Mouse monoclonal [JDC-12] Secondary Antibody to Human lambda - light chain (Biotin)	Dot, ELISA, ICC, ICC/IF, IHC-Fr, WB	99812
Mouse monoclonal [K4F5] Secondary Antibody to Rat IgG (Biotin)	ELISA	99693
Mouse monoclonal [L-1] Secondary Antibody to Chicken lambda - light chain (Biotin)	ELISA, Flow Cyt, ICC/IF, IHC-Fr, SDS-PAGE	99732
Mouse monoclonal [M 2A1] Secondary Antibody to Rat IgM - mu chain (Biotin)	ELISA, Flow Cyt, FuncS, ICC/IF	99685
Mouse monoclonal [MARE-1] Secondary Antibody to Rat IgE - heavy chain (Biotin)	ELISA, WB	11666
Mouse monoclonal [MARG1-2] Secondary Antibody to Rat IgG1 - heavy chain (Biotin)	ELISA	11668
Mouse monoclonal [MARG2a-1] Secondary Antibody to Rat IgG2a - heavy chain (Biotin)	ELISA	11670
Mouse monoclonal [MARG2b-8] Secondary Antibody to Rat IgG2b - heavy chain (Biotin)	ELISA	11675
Mouse monoclonal [RG-16] Secondary Antibody to Rabbit IgG+IgM+IgA - heavy chain (Biotin)	Dot, ELISA, IHC-P	49964
Mouse monoclonal [SA-DA4] Secondary Antibody to Human IgM - mu chain (Biotin)	Dot, ELISA, ICC/IF, IHC-Fr, WB	99738
Mouse monoclonal [SB139a] Secondary Antibody to Armenian Hamster IgG - heavy chain (Biotin)	ELISA	99845
Mouse monoclonal [SB139b] Secondary Antibody to Armenian Hamster IgG3 - heavy chain (Biotin)	ELISA	99841
Mouse monoclonal [SB139e] Secondary Antibody to Armenian Hamster IgG - heavy chain (Biotin)	ELISA	99842
Mouse monoclonal [UHB] Secondary Antibody to Human IgM - mu chain (Biotin)	Dot, ELISA, ICC, ICC/IF, IHC-Fr, WB	99745
Mouse monoclonal Secondary Antibody to Human IgG2 - Fc (Biotin)	Dot, ELISA, ICC/IF, IHC-Fr, WB	99785
Rabbit F(ab') ₂ polyclonal Secondary Antibody to Chicken IgY - H&L (Biotin)	ELISA, ICC, IHC-P, WB	102334
Rabbit F(ab') ₂ polyclonal Secondary Antibody to Goat IgG - H&L (Biotin), pre-adsorbed	ELISA, ICC, IHC-P, WB	102348
Rabbit F(ab') ₂ polyclonal Secondary Antibody to Human IgG - H&L (Biotin)	ELISA, ICC/IF, IHC-P, WB	98538
Rabbit F(ab') ₂ polyclonal Secondary Antibody to Human IgG - H&L (Biotin), pre-adsorbed	ELISA, ICC/IF, IHC-P, WB	98609
Rabbit F(ab') ₂ polyclonal Secondary Antibody to Mouse IgG - H&L (Biotin)	ELISA, ICC/IF, IHC-P, WB	98668
Rabbit F(ab') ₂ polyclonal Secondary Antibody to Mouse IgG - H&L (Biotin), pre-adsorbed	ELISA, ICC/IF, IHC-P, WB	98775
Rabbit F(ab') ₂ polyclonal Secondary Antibody to Rat IgG - H&L (Biotin)	ELISA, ICC, IHC-P, WB	102202
Rabbit F(ab') ₂ polyclonal Secondary Antibody to Rat IgG - H&L (Biotin), pre-adsorbed	ELISA, ICC, IHC-P, WB	102241
Rabbit F(ab') ₂ polyclonal Secondary Antibody to Rat IgG - H&L (Biotin), pre-adsorbed	ELISA, ICC, IHC-P, WB	102268
Rabbit polyclonal Secondary Antibody to Chicken IgY - H&L (Biotin)	ELISA, ICC/IF, IHC-P, WB	97138
Rabbit polyclonal Secondary Antibody to Cow IgG - H&L (Biotin)	ELISA, ICC, IHC-P, WB	102147
Rabbit polyclonal Secondary Antibody to Donkey IgG - H&L (Biotin)	ELISA, ICC/IF, IHC-P, WB	98810
Rabbit polyclonal Secondary Antibody to Goat IgG - Fc (Biotin), pre-adsorbed	ELISA, ICC, IHC-P, WB	102339
Rabbit polyclonal Secondary Antibody to Goat IgG - H&L (Biotin)	ELISA, ICC/IF, IHC-P, WB	97098
Rabbit polyclonal Secondary Antibody to Goat IgG - H&L (Biotin), pre-adsorbed	ELISA, ICC/IF, IHC-P, WB	97103

Secondaries

Product name	Applications	Catalog # www.abcam.com/...
Rabbit polyclonal Secondary Antibody to Guinea pig IgG - H&L (Biotin)	ELISA, ICC/IF, IHC-P, WB	102358
Rabbit polyclonal Secondary Antibody to Horse IgG - H&L (Biotin)	ELISA, ICC, IHC-P, WB	102399
Rabbit polyclonal Secondary Antibody to Human IgA - alpha chain (Biotin)	ELISA, ICC/IF, IHC-P, WB	97218
Rabbit polyclonal Secondary Antibody to Human IgA (Biotin)	ELISA, RIA, WB	85864
Rabbit polyclonal Secondary Antibody to Human IgG - H&L (Biotin)	ELISA, ICC/IF, IHC-P, WB	97158
Rabbit polyclonal Secondary Antibody to Human IgG - H&L (Biotin), pre-adsorbed	ELISA, ICC/IF, IHC-P, WB	98570
Rabbit polyclonal Secondary Antibody to Human IgG (Biotin)	ELISA, RIA, WB	86250
Rabbit polyclonal Secondary Antibody to Human IgG2 (Biotin)	ELISA, RIA, WB	86254
Rabbit polyclonal Secondary Antibody to Human IgG3 (Biotin)	ELISA, RIA, WB	86252
Rabbit polyclonal Secondary Antibody to Human IgM - mu chain (Biotin)	ELISA, ICC/IF, IHC-P, WB	97208
Rabbit polyclonal Secondary Antibody to Mouse IgG - H&L (Biotin)	ELISA, ICC/IF, IHC-P, WB	97044
Rabbit polyclonal Secondary Antibody to Mouse IgG - H&L (Biotin), pre-adsorbed	ELISA, ICC/IF, IHC-P, WB	98784
Rabbit polyclonal Secondary Antibody to Pig IgG - H&L (Biotin)	ELISA, ICC, IHC-P, WB	102138
Rabbit polyclonal Secondary Antibody to Rat IgG - H&L (Biotin)	ELISA, ICC, IHC-P, WB	102170
Rabbit polyclonal Secondary Antibody to Rat IgG - H&L (Biotin), pre-adsorbed	ELISA, ICC/IF, IHC-P, WB	102207
Rabbit polyclonal Secondary Antibody to Rat IgG - H&L (Biotin), pre-adsorbed	ELISA, ICC, IHC-P, WB	102250
Rabbit polyclonal Secondary Antibody to Sheep IgG - H&L (Biotin)	ELISA, ICC/IF, IHC-P, WB	97128
Rabbit polyclonal Secondary Antibody to Syrian Hamster IgG - H&L (Biotin)	ELISA, ICC, IHC-P, WB	102311
Rat monoclonal [11-44-2] Secondary Antibody to Mouse IgA - alpha chain (Biotin)	ELISA, Flow Cyt, ICC/IF	99611
Rat monoclonal [187.1] Secondary Antibody to Mouse kappa light chain (Biotin)	ELISA, Flow Cyt, ICC/IF	99618
Rat monoclonal [1B4B1] Secondary Antibody to Mouse IgM - mu chain (Biotin)	ELISA, Flow Cyt, ICC/IF	99595
Rat monoclonal [23G3] Secondary Antibody to Mouse IgE - heavy chain (Biotin)	ELISA, Flow Cyt, ICC/IF	99585
Rat monoclonal [H139-52.1] Secondary Antibody to Mouse kappa light chain (Biotin)	ELISA, Flow Cyt, ICC/IF	99633
Rat monoclonal [JC5-1] Secondary Antibody to Mouse lambda light chain (Biotin)	ELISA, Flow Cyt, ICC/IF	99626
Rat monoclonal [LO-ME-3] Secondary Antibody to Mouse IgE - epsilon chain (Biotin), pre-adsorbed	ELISA	11580
Rat monoclonal [LO-MG1-2] Secondary Antibody to Mouse IgG1 - heavy chain (Biotin)	ELISA	11587
Rat monoclonal [LO-MG2a-7] Secondary Antibody to Mouse IgG2a - heavy chain (Biotin)	ELISA	11590
Rat monoclonal [LO-MG2a-9] Secondary Antibody to Mouse IgG2a - heavy chain (Biotin)	ELISA	92975
Rat monoclonal [LO-MG2b-2] Secondary Antibody to Mouse IgG2b - heavy chain (Biotin)	ELISA	11654
Rat monoclonal [LO-MG2b-2] Secondary Antibody to Mouse IgG2b - heavy chain (Biotin)	ELISA, Flow Cyt, ICC/IF	99640
Rat monoclonal [LO-MG3-7] Secondary Antibody to Mouse IgG3 - heavy chain (Biotin)	ELISA	11657
Rat monoclonal [LO-MG3-7] Secondary Antibody to Mouse IgG3 - heavy chain (Biotin)	ELISA, Flow Cyt, ICC/IF	99647
Rat monoclonal [LO-MM-9] Secondary Antibody to Mouse IgM - heavy chain (Biotin)	ELISA	11659
Rat monoclonal [SB76b] Secondary Antibody to Mouse IgG3 (Biotin)	ELISA, Flow Cyt	99839
Rat monoclonal [SB77e, SB84a, SB74c] Secondary Antibody to Mouse IgG (Biotin), pre-adsorbed	ELISA, Flow Cyt	99652
Rat monoclonal [SB77e] Secondary Antibody to Mouse IgG1 (Biotin)	ELISA, Flow Cyt	99604
Rat monoclonal [SB84a] Secondary Antibody to Mouse IgG2a - gamma chain (Biotin)	ELISA, Flow Cyt, ICC/IF	79093
Rat monoclonal [SB87a] Secondary Antibody to Rabbit IgG+IgM (Biotin), pre-adsorbed	ELISA, Flow Cyt	80302
Sheep polyclonal Secondary Antibody to Cow IgG1 (Biotin)	ELISA, WB	106510
Sheep polyclonal Secondary Antibody to Human IgG - H&L (Biotin)	ELISA, ICC, IHC-P, WB	102442
Sheep polyclonal Secondary Antibody to Mouse IgG - H&L (Biotin)	ELISA, ICC, IHC-P, WB	102456
Sheep polyclonal Secondary Antibody to Rabbit IgG - H&L (Biotin)	ELISA, ICC/IF, IHC-P, WB	97093
Sheep polyclonal Secondary Antibody to Rat IgG - H&L (Biotin)	ELISA, ICC, IHC-P, WB	102175



Scientific support: www.abcam.com/technical | ELISA resources: www.abcam.com/elisa
 Species abbreviations key: **Hu:** Human | **Ms:** Mouse | **Mcq:** Macaque | **Mk:** Monkey | **Rt:** Rat

PROTEINS

Proteins

Product name	Applications	Catalog # www.abcam.com/...
160 kD Neurofilament Medium protein	ELISA, SDS-PAGE	73759
ADFP protein (T7 Tag)	ELISA, Inhib, MS, WB	73631
Adiponectin protein (His tag)	ELISA, WB	67744
Adiponectin protein (Mutated C39 A) (Tagged)	ELISA, WB	94676
Adiponectin protein (Tagged)	ELISA, FuncS, WB	63261
AlaRS protein (His tag)	ELISA, SDS-PAGE, WB	73442
ALK protein	ELISA, Inhib, WB	38128
AMACR protein (Human)	ELISA, Inhib, WB	76145
Annexin A1 protein (Tagged-His Tag)	ELISA, MS, SDS-PAGE, WB	92966
Annexin A10 protein (Tagged)	ELISA, MS, SDS-PAGE, WB	93007
Annexin A3 protein (His tag)	ELISA, MS, SDS-PAGE, WB	92814
Annexin II protein (His tag)	ELISA, MS, SDS-PAGE, WB	93005
Annexin IV protein (His tag)	ELISA, SDS-PAGE, WB	92815
Annexin VI protein (Tagged-His Tag)	ELISA, MS, SDS-PAGE, WB	92968
Apolipoprotein B protein (His tag)	ELISA, SDS-PAGE, WB	80037
Apolipoprotein D protein (His tag)	ELISA, WB	63849
Apolipoprotein D protein (Tagged)	BL, ELISA, WB	38530
Apolipoprotein H protein	ELISA, SDS-PAGE	62258
Apolipoprotein H protein (His tag)	ELISA, WB	73695
APPL protein (Tagged-His Tag)	ELISA, IP, WB	94678
Avidin protein (Active)	ELISA, WB	73656
Avidin protein (HRP)	ELISA, IHC-P, WB	59653
Bad protein	ELISA, Inhib, WB	39459
BAF53A protein	ELISA, Inhib, WB	38181
Bcl6 protein	ELISA, Inhib, WB	39476
beta 2 Microglobulin protein (Tagged)	ELISA, Inhib, WB	39442
BK polyomavirus, strain AS, Major Capsid VP1 protein	ELISA, SDS-PAGE, WB	74567
BLK protein	ELISA, Inhib, SDS-PAGE, WB	39458
BMP4 protein (MBP)	ELISA, SDS-PAGE, WB	92855
Borrelia burgdorferi p41 protein	ELISA, WB	67738
BP1 protein (Human)	ELISA, Inhib, WB	83608
C Reactive Protein protein (His tag)	ELISA, SDS-PAGE, WB	80205
C3IP1 protein (Human)	ELISA, Inhib, SDS-PAGE, WB	74979
C5 / C5a protein	ELISA	91018
Calmodulin protein (Human)	ELISA, Inhib, WB	73421
Calreticulin protein	ELISA, WB	15729
Calretinin protein	ELISA, Inhib, WB	38221
CARD14 protein	ELISA, Inhib, WB	38230
Cathepsin D protein	ELISA, Inhib, WB	38258
CCN1 protein (His tag)	ELISA, SDS-PAGE, WB	79550
CCN3 protein (His tag)	ELISA, SDS-PAGE, WB	79564
CD105 protein	ELISA, Inhib, SDS-PAGE, WB	40050
CD105 protein	ELISA, SDS-PAGE	54338
CD105 protein (Active)	ELISA, SDS-PAGE	54339
CD23 protein (Human)	ELISA, Inhib, WB	83616
CD272 protein (His tag)	ELISA, MS, SDS-PAGE, WB	92923
CD31 protein (Tagged)	ELISA, Inhib, SDS-PAGE, WB	39438
CD34 protein (Human)	ELISA, Inhib, WB	83618
CD4 protein	ELISA, Inhib, SDS-PAGE, WB	39483
CD4 protein (Tagged)	ELISA, Inhib, WB	83622
CD45 protein	ELISA, Inhib, WB	39445
CD45 protein (Tagged)	ELISA, Inhib, WB	72892
CD55 protein (His tag)	ELISA, SDS-PAGE, WB	80038
CD68 protein	ELISA, Inhib, WB	38260

Proteins

Product name	Applications	Catalog # www.abcam.com/...
CD72 protein (Tagged)	ELISA, Inhib, WB	38807
CD9 protein	ELISA, Inhib, SDS-PAGE, WB	39492
CD99 protein	ELISA, Inhib, WB	38259
CDT2 protein (His tag)	ELISA, SDS-PAGE, WB	80154
CENPA protein (His tag)	ELISA, WB	73635
CENPB protein (His tag)	ELISA, WB	73636
Chagas TcF protein	ELISA, WB	73161
Chk1 protein (fragment)	ELISA, Inhib, WB	38817
Chlamydia Trachomatis HSP70 protein	ELISA, SDS-PAGE	67711
Chlamydia Trachomatis HSP70 protein	ELISA, SDS-PAGE	67712
Chlamydia trachomatis MOMP protein (His tag)	ELISA, SDS-PAGE	67705
Chlamydia trachomatis MOMP protein (His tag)	ELISA, SDS-PAGE	67706
Chlamydia trachomatis MOMP protein (His tag)	ELISA, SDS-PAGE	67707
Chlamydia trachomatis MOMP protein (His tag)	ELISA, SDS-PAGE	67709
Chromogranin A protein (Tagged)	ELISA, Inhib, SDS-PAGE, WB	38256
CINP protein	ELISA, Inhib, SDS-PAGE, WB	38229
CITED1 protein	ELISA, Inhib, WB	39460
CITED2 protein (His tag)	ELISA, SDS-PAGE, WB	80152
COL4A3 protein (His tag)	Dot, ELISA, SDS-PAGE, WB	73664
Collagen I protein	ELISA, IP, WB	7526
Collagen I protein	ELISA, IP, WB	7533
Collagen II protein	ELISA, IP, WB	7527
Collagen II protein	ELISA, IP, WB	7534
Collagen III protein	ELISA, IP, WB	7528
Collagen III protein	ELISA, IP	7535
Collagen IV protein	ELISA, IP, WB	7529
Collagen IV protein	BL, ELISA, IP, WB	7536
Collagen V protein	ELISA, IP, WB	7530
Collagen V protein	ELISA, IP, WB	7537
Collagen VI protein	ELISA, IP, WB	7531
Collagen VI protein	ELISA, IP, WB	7538
Corticotropin Releasing Factor protein (His tag)	ELISA, SDS-PAGE, WB	96279
CRCP protein	ELISA, Inhib, SDS-PAGE, WB	75326
Creatine Kinase BB protein (Active)	ELISA, FuncS, SDS-PAGE	73647
Creatine Kinase MB protein (Active)	ELISA, FuncS, SDS-PAGE	73649
Creatine Kinase MB protein (Active)	ELISA, SDS-PAGE	73650
Creatine Kinase MM protein (Active)	ELISA, SDS-PAGE	73652
CRHBP protein	ELISA, SDS-PAGE, WB	101052
CRIP2 protein	ELISA, Inhib, WB	39506
CRIP2 protein	ELISA, Inhib, WB	39511
Cripto1 protein (MBP)	ELISA, MS, SDS-PAGE, WB	93004
CTAG1B protein (Human)	ELISA, Inhib, SDS-PAGE, WB	83644
Cyclin C protein (His tag)	ELISA, IP, WB	59893
Cyclin C protein (Tagged)	ELISA, IP, SDS-PAGE, WB	73502
Cyclin H protein	ELISA, Inhib, WB	39435
Cystatin A protein (Human)	ELISA, Inhib, WB	75466
Cystatin C protein	ELISA, WB	7653
Cytochrome P450 2D6 protein (Human)	ELISA, WB	73434
Cytomegalovirus Glycoprotein B protein	ELISA, WB	43040
Cytomegalovirus ICP36 protein	ELISA, WB	43044
Cytomegalovirus pp150 protein	ELISA, WB	43039
Cytomegalovirus pp28 protein	ELISA, WB	43038
Cytomegalovirus pp65 IE protein	ELISA, Flow Cyt, WB	54103
Cytomegalovirus pp65 protein	ELISA, WB	43041
Cytomegalovirus UL80a protein	ELISA, WB	43042
D4 GDI protein	ELISA, Inhib, SDS-PAGE, WB	39943
DCTN5 protein (Human)	ELISA, Inhib, WB	75513

Proteins

Product name	Applications	Catalog # www.abcam.com/...
D-Dimer protein	ELISA	35949
DDIT4 protein	ELISA, Inhib, SDS-PAGE, WB	40031
Dengue Virus NS1 glycoprotein protein	ELISA, WB	64456
DerF1 protein	ELISA, SDS-PAGE, WB	73856
DerP1 protein	ELISA, SDS-PAGE, WB	73855
Desmin protein (Human)	ELISA, SDS-PAGE	73642
DIP13B protein	ELISA, IP, WB	94682
DIP13B protein (His tag)	ELISA, IP, WB	94997
E Cadherin protein (Tagged)	ELISA, Inhib, SDS-PAGE, WB	38254
EBV Nuclear Antigen protein	ELISA, WB	68991
EBV p23 protein	ELISA, WB	43145
EBV protein	ELISA, WB	43141
EGFR protein (Active)	ELISA, Inhib, WB	68900
EGFR protein (Tagged)	ELISA, Inhib, WB	38026
eIF3K protein (His tag)	ELISA, SDS-PAGE, WB	80036
ENSA protein	ELISA, Inhib, WB	38035
Ephrin A4 protein (Tagged)	ELISA, Inhib, WB	38037
Ephrin B protein (Tagged)	ELISA, Inhib, SDS-PAGE, WB	38038
Ephrin B2 protein (Fc Chimera His Tag)	ELISA, SDS-PAGE, WB	92862
Ephrin B3 protein (Tagged)	ELISA, Inhib, WB	38039
ErbB 2 protein	ELISA, Inhib, SDS-PAGE, WB	40048
ErbB 2 protein	ELISA, WB	63288
ERCC1 protein (Tagged)	ELISA, Inhib, WB	83630
Estrogen Inducible Protein pS2 protein (His tag)	ELISA, SDS-PAGE, WB	89485
Estrogen Receptor alpha protein	ELISA, Inhib, WB	38041
ETS1 protein (Tagged)	ELISA, Inhib, WB	83631
EXOSC10 protein (His tag)	ELISA, WB	73483
FABP4 protein	ELISA, WB	63283
FAM111B protein (His tag)	ELISA, SDS-PAGE, WB	79576
FGF21 protein	ELISA, WB	63277
FGF21 protein (His tag)	ELISA, SDS-PAGE, WB	64004
FHIT protein (Tagged)	ELISA, Inhib, WB	38049
Fibroblast activation protein, alpha protein (Tagged)	ELISA, Inhib, SDS-PAGE, WB	83633
Fos B protein (Tagged)	ELISA, Inhib, WB	38057
FOXA1 protein	ELISA, SDS-PAGE	98301
FOXA2 protein (Human)	I-ELISA, SDS-PAGE, WB	95848
Fragilis protein	ELISA, MS, SDS-PAGE, WB	92921
FUT5 protein (His tag)	ELISA, SDS-PAGE, WB	80076
Fyn protein	ELISA, WB	38061
GADD153 protein (Tagged)	ELISA, Inhib, WB	38064
Galectin 3 protein (Tagged)	ELISA, Inhib, WB	38068
GANP protein (Tagged)	ELISA, Inhib, SDS-PAGE, WB	83634
Gastrin protein (Tagged)	ELISA, Inhib, SDS-PAGE, WB	83635
GDF8 / Myostatin protein (His tag)	ELISA, WB	73281
GDF8 / Myostatin protein (Propeptide domain)	ELISA, WB	63300
GIPC1 protein	ELISA, Inhib, SDS-PAGE, WB	75336
GRO alpha protein (Tagged)	ELISA, MS, SDS-PAGE, WB	92856
GRO gamma protein (Tagged)	ELISA, MS, SDS-PAGE, WB	92858
GRP78 BiP protein (Active)	CBA, ELISA, FuncS, SDS-PAGE, WB	78432
HA1 (H9N2) protein	ELISA, WB	67740
Hantavirus Dobrava, strain Slovenia, nucleocapsid protein (His tag)	ELISA, SDS-PAGE, WB	74556
Hantavirus Puumala, strain Vranica, nucleocapsid protein (His tag)	ELISA, SDS-PAGE, WB	74555
Hantavirus Seoul, strain 80-39, nucleocapsid protein (His tag)	ELISA, WB	74558
HBsAg adr protein	ELISA	73749
HCV nucleocapsid protein protein	ELISA, WB	43027
Hepatitis A Virus protein	ELISA, WB	49010
Hepatitis A Virus protein	ELISA, WB	49011

Proteins

Product name	Applications	Catalog # www.abcam.com/...
Hepatitis A Virus protein	ELISA, SDS-PAGE	49012
Hepatitis A Virus protein	ELISA, Flow Cyt, SDS-PAGE, WB	54098
Hepatitis A Virus protein	ELISA, Flow Cyt, SDS-PAGE, WB	54099
Hepatitis A Virus protein	ELISA, Flow Cyt, SDS-PAGE, WB	54100
Hepatitis A Virus protein	ELISA, WB	68637
Hepatitis A Virus Surface Antigen protein	ELISA, WB	68870
Hepatitis A Virus Surface Antigen protein	ELISA, WB	68871
Hepatitis A virus VP1 protein protein	ELISA, WB	68635
Hepatitis A virus VP3 protein protein	ELISA, SDS-PAGE, WB	68371
Hepatitis B Surface Antigen (Adw) protein	ELISA, SDS-PAGE, WB	91276
Hepatitis B Virus Core Antigen protein	ELISA, SDS-PAGE, WB	49013
Hepatitis B Virus Core Antigen protein	ELISA, WB	49014
Hepatitis B Virus E Antigen protein	ELISA, SDS-PAGE, WB	91273
Hepatitis B Virus Surface Antigen (Ayw) protein	ELISA, SDS-PAGE	73741
Hepatitis B Virus Surface Antigen (Ayw) protein	ELISA, SDS-PAGE, WB	91277
Hepatitis C Virus Core Antigen protein	ELISA, Flow Cyt, WB	49015
Hepatitis C Virus Core Antigen protein	ELISA, WB	49016
Hepatitis C Virus Core Antigen protein	ELISA, SDS-PAGE, WB	49017
Hepatitis C Virus Core Antigen protein	ELISA, WB	49018
Hepatitis C Virus Core Antigen protein (Biotin)	ELISA, SDS-PAGE, WB	49020
Hepatitis C Virus Core Antigen protein (FITC)	ELISA, SDS-PAGE, WB	49021
Hepatitis C Virus NS3 protein	ELISA, SDS-PAGE, WB	91395
Hepatitis C Virus NS3 protein (Beta-Galactosidase)	ELISA, WB	67975
Hepatitis C Virus NS3 protein (Biotin)	ELISA, WB	68047
Hepatitis C Virus NS3 protein (Tagged)	ELISA, Flow Cyt, SDS-PAGE, WB	49022
Hepatitis C Virus NS3 protein (Tagged)	ELISA, Flow Cyt, SDS-PAGE, WB	49024
Hepatitis C Virus NS3 protein (Tagged)	ELISA, Flow Cyt, SDS-PAGE, WB	49025
Hepatitis C Virus Core 1a protein	ELISA, SDS-PAGE, WB	67718
Hepatitis C Virus Core 1b protein	ELISA, SDS-PAGE, WB	91301
Hepatitis C Virus Core 1b protein (Beta-Galactosidase)	ELISA, WB	67745
Hepatitis C Virus Core 24 protein	ELISA, WB	67735
Hepatitis C Virus Core 2a protein	ELISA, WB	67726
Hepatitis C Virus Core 2b protein	ELISA, SDS-PAGE, WB	91302
Hepatitis C Virus Core 6a protein	ELISA, WB	67734
Hepatitis C Virus Genotype 1 NS4 protein	ELISA, WB	67978
Hepatitis C virus Genotype 1a NS3 protein	ELISA, WB	91471
Hepatitis C Virus genotype 1a NS5 protein	ELISA, WB	68373
Hepatitis C Virus genotype 1a NS5 protein	ELISA, WB	68618
Hepatitis C Virus genotype 1a NS5 protein (Tagged)	ELISA, Flow Cyt, WB	49033
Hepatitis C virus Genotype 1b NS3 protein	ELISA, WB	91470
Hepatitis C Virus genotype 1b NS5 protein	ELISA, WB	68620
Hepatitis C Virus Genotype 1c NS3 protein	ELISA, WB	67963
Hepatitis C Virus Genotype 2 NS4 protein	ELISA, WB	67979
Hepatitis C Virus genotype 2a NS5 protein	ELISA, WB	68374
Hepatitis C Virus genotype 2a NS5 protein	ELISA, SDS-PAGE, WB	68375
Hepatitis C Virus Genotype 2b NS3 protein	ELISA, WB	67964
Hepatitis C Virus Genotype 2c NS3 protein	ELISA, WB	67965
Hepatitis C Virus Genotype 3 NS3 protein	ELISA, SDS-PAGE, WB	67966
Hepatitis C Virus Genotype 3 NS4 protein	ELISA, WB	67980
Hepatitis C Virus genotype 3a NS5 protein	ELISA, WB	68376
Hepatitis C Virus genotype 3a NS5 protein	ELISA, WB	68626
Hepatitis C Virus Genotype 4 NS3 protein	ELISA, SDS-PAGE, WB	67967
Hepatitis C Virus Genotype 5 NS3 protein	ELISA, SDS-PAGE, WB	67968
Hepatitis C Virus Genotype 5 NS3 protein	ELISA, SDS-PAGE, WB	67970
Hepatitis C Virus Genotype 5 NS4 protein	ELISA, WB	67986
Hepatitis C Virus Genotype 5a NS3 protein	ELISA, SDS-PAGE, WB	67971
Hepatitis C Virus Genotype 6 NS3 protein	ELISA, WB	67974

Proteins

Product name	Applications	Catalog # www.abcam.com/...
Hepatitis C Virus Genotype 6a NS3 protein	ELISA, SDS-PAGE, WB	67973
Hepatitis C Virus genotype 6a NS5 protein	ELISA, SDS-PAGE, WB	68377
Hepatitis C virus NS3+NS4+NS5 protein	ELISA, SDS-PAGE, WB	91398
Hepatitis C Virus NS4 protein	ELISA, WB	49027
Hepatitis C Virus NS4 protein	ELISA, WB	67977
Hepatitis C Virus NS4 protein (HRP)	ELISA, WB	68048
Hepatitis C Virus NS4 protein (Tagged)	ELISA, Flow Cyt, SDS-PAGE, WB	49026
Hepatitis C Virus NS4 protein (Tagged)	ELISA, WB	49028
Hepatitis C Virus NS4 protein (Tagged)	ELISA, SDS-PAGE, WB	49029
Hepatitis C Virus NS4A +B protein (FITC)	ELISA, WB	78143
Hepatitis C Virus NS5 protein	ELISA, WB	68616
Hepatitis C Virus NS5 protein (Biotin)	ELISA, WB	68096
Hepatitis C Virus NS5 protein (Tagged)	ELISA, Flow Cyt, WB	49032
Hepatitis D Virus protein	ELISA, WB	49050
Hepatitis E Virus ORF2 antigen protein (Tagged)	ELISA, WB	49036
Hepatitis Virus Genotype 1b NS3 protein	ELISA, WB	67952
Hepatitis Virus Genotype 1b NS3 protein (His tag)	ELISA, WB	67962
HHV4 p23 protein	ELISA, SDS-PAGE, WB	68365
HHV8 RF8+ORF65 protein	ELISA, SDS-PAGE, WB	67704
HIV gp160 protein	ELISA, SDS-PAGE, WB	68171
HIV gp41 L protein	ELISA, WB	49071
HIV gp41 protein	ELISA, WB	49070
HIV1 + HIV2 envelope antigen protein	ELISA, WB	48966
HIV1 + HIV2 envelope antigen protein (fragment)	ELISA, WB	43024
HIV1 gp120 + gp41 + HIV2 gp 39 protein	ELISA, WB	68872
HIV1 gp120 + gp41 protein	ELISA, SDS-PAGE, WB	68127
HIV1 gp120 + gp41 protein (Tagged)	ELISA, WB	49054
HIV1 gp120 protein	ELISA, WB	69717
HIV1 gp120 protein	ELISA, WB	73769
HIV1 gp160 MN protein	ELISA, WB	73770
HIV1 gp41 protein	ELISA, SDS-PAGE, WB	68129
HIV1 gp41 protein (HRP)	ELISA, WB	68935
HIV1 gp41 protein (Tagged)	ELISA, WB	49068
HIV1 gp41 protein (Tagged)	ELISA, WB	68205
HIV1 integrase protein (Tagged)	ELISA, WB	49075
HIV1 integrase protein (Tagged)	ELISA, WB	49082
HIV1 Nef protein (Tagged)	ELISA, WB	49060
HIV1 p15 protein	ELISA, SDS-PAGE, WB	63994
HIV1 p17 + p24 + gp120 + gp41 protein	ELISA, WB	49079
HIV1 p17 + p24 + gp120 protein	ELISA, WB	49077
HIV1 p17 + p24 protein (Tagged)	ELISA, WB	49081
HIV1 p24 protein	ELISA, WB	43037
HIV1 p24 protein	ELISA, WB	73768
HIV1 p24 protein (Biotin)	ELISA, WB	68099
HIV1 p24 protein (His tag)	ELISA, WB	68202
HIV1 p24 protein (His tag)	ELISA, SDS-PAGE, WB	73028
HIV1 p24 protein (Tagged)	ELISA, WB	49055
HIV1 type O gp41 protein (MBP)	ELISA, SDS-PAGE, WB	68379
HIV2 gp32 protein	ELISA, WB	49083
HIV2 gp36 protein	ELISA, WB	43035
HIV2 gp36 protein (His tag)	ELISA, SDS-PAGE, WB	73034
HIV2 gp36 protein (Tagged)	ELISA, WB	49057
HIV2 gp39 protein	ELISA, WB	68891
HNF6 protein	Dot, ELISA, SDS-PAGE, WB	98300
Hsc70 protein (Active)	CBA, ELISA, FuncS, SDS-PAGE, WB	78431
Hsp40 protein (His tag)	ELISA, SDS-PAGE, WB	80371
Hsp60 protein (Active)	CBA, ELISA, SDS-PAGE, WB	78430

Proteins

Product name	Applications	Catalog # www.abcam.com/...
Hsp70 protein (Active)	ELISA, FuncS, SDS-PAGE, WB	78427
Hsp70 protein (Active)	CBA, ELISA, FuncS, SDS-PAGE, WB	78433
Hsp70 protein (Active)	CBA, ELISA, FuncS, SDS-PAGE, WB	78434
Hsp70 protein (Active)	ELISA, FuncS, SDS-PAGE, WB	80031
Hsp90 beta protein (Human)	ELISA, FuncS, Inhib, SDS-PAGE, WB	80033
Hsp90 protein (Tagged)	ELISA, Inhib, SDS-PAGE, WB	83636
HSV1 gD protein	ELISA, WB	43045
HSV1 gD protein	ELISA, WB	48969
HSV1 gD protein	ELISA, WB	48970
HSV1 gG Envelope Protein protein	ELISA, WB	43048
HSV1 gG Envelope Protein protein	ELISA, SDS-PAGE, WB	67739
HSV2 gD protein	ELISA, WB	43046
HSV2 gD protein	ELISA, WB	48939
HSV2 gD protein	ELISA, WB	48971
HSV2 gG Envelope protein	ELISA, WB	43047
HSV2 gG Envelope Protein protein	ELISA, SDS-PAGE, WB	67703
HTLV gp21 protein (Tagged)	ELISA, WB	68933
HTLV I gp46 protein	ELISA, WB	68985
HTLV I gp46 protein (His tag)	ELISA, WB	93919
HTLV I p24 protein	ELISA, WB	43036
Human Serum Albumin protein (Biotin)	Dot, ELISA, IM, WB	8033
Human Serum Albumin protein (HRP)	Dot, ELISA, IHC-Fr, IHC-P, IM, WB	8032
Hydroxyproline protein	ELISA	93631
IFITM2 protein (Tagged-His Tag)	ELISA, MS, SDS-PAGE, WB	92922
IGF1 Receptor protein	ELISA, Inhib, SDS-PAGE, WB	83637
IL31 protein	ELISA, HPLC, SDS-PAGE, WB	106619
Influenza A Virus Hemagglutinin H1 protein	ELISA, WB	69741
Influenza A Virus Hemagglutinin H3 protein	ELISA, WB	69749
Influenza A Virus Hemagglutinin H3 protein	ELISA, WB	69750
Influenza A Virus Hemagglutinin H3 protein	ELISA, WB	69751
Influenza A Virus Hemagglutinin H5 protein	ELISA, WB	69748
Influenza B/Jilin/20/2003 protein	ELISA, WB	67743
Influenza B/Ohio/01/05 protein	ELISA, WB	67742
Intrinsic Factor protein	ELISA, SDS-PAGE	99233
Intrinsic Factor protein (His tag)	Dot, ELISA, SDS-PAGE	73789
Involucrin protein (Human)	ELISA, Inhib, WB	73744
Involucrin protein (Tagged)	ELISA, Inhib, SDS-PAGE, WB	83952
Islet 1 protein	ELISA, SDS-PAGE	98303
ITLN1 protein	ELISA, WB	61902
JCV Polyomavirus Major Capsid VP1 protein	ELISA, SDS-PAGE, WB	74569
KHFV nucleocapsid protein (His tag)	ELISA, SDS-PAGE, WB	74557
KLF7 protein (His tag)	ELISA, SDS-PAGE, WB	80151
Ku70 + Ku80 protein (His tag)	ELISA, WB	73790
Laminin 5 protein	ELISA	42326
Leptin protein	ELISA, WB	7651
Leptin protein	ELISA, IHC-P, WB	13987
LETMD1 protein (His tag)	ELISA, SDS-PAGE, WB	79566
Lipocalin 2 protein	ELISA, IP, WB	107701
Lipocalin 2 protein (Human)	ELISA, IP, WB	95007
Lipocalin 2 protein (Mouse)	ELISA, IP, WB	95008
Lipocalin 2 protein (Tagged)	ELISA, MS, SDS-PAGE, WB	92916
LMO4 protein (Human)	ELISA, Inhib, WB	75531
LSM4 protein (Human)	ELISA, Inhib, WB	75534
Lyn protein (Tagged)	ELISA, Inhib, SDS-PAGE, WB	83954
LYVE1 protein (Human)	ELISA, Inhib, WB	75537
MAGE 1 protein (Human)	ELISA, Inhib, WB	75539
MAGEA8 protein (His tag)	ELISA, SDS-PAGE, WB	80156

Proteins

Product name	Applications	Catalog # www.abcam.com/...
Mammaglobin A protein	ELISA, Inhib, SDS-PAGE, WB	75540
Mannose 6 Phosphate Receptor (Cation dependent) protein (His tag)	ELISA, SDS-PAGE, WB	80157
MASPIN protein (Tagged)	ELISA, Inhib, WB	75563
Measles Hemagglutinin protein	ELISA, WB	68495
Measles Hemagglutinin protein	ELISA, WB	68497
Measles Large Fusion Protein protein	ELISA, WB	68496
Measles Large Polymerase protein	ELISA, WB	68490
Measles Large Polymerase protein	ELISA, WB	68492
Measles Non-Structural C protein	ELISA, WB	68491
Measles nucleoprotein protein	ELISA, WB	68493
Measles virus Priorix, Schwarz strain, nucleocapsid protein	ELISA, SDS-PAGE, WB	74559
Melanoma gp100 protein	ELISA, Inhib, WB	38124
Met (c-Met) protein (Tagged)	ELISA, Inhib, WB	83629
MICA protein	ELISA, SDS-PAGE	73819
Microglobulin (alpha 1) protein	ELISA, Inhib, SDS-PAGE, WB	38131
Midkine protein (His tag)	ELISA, SDS-PAGE, WB	73234
MiTF protein (Human)	ELISA, Inhib, SDS-PAGE, WB	83639
MLH1 protein (Human)	ELISA, Inhib, WB	83640
MMP1 protein (Human)	ELISA, SDS-PAGE, WB	39297
MMP11 protein (Human)	ELISA, SDS-PAGE, WB	39310
MMP11 protein (Tagged-His Tag)	ELISA, MS, SDS-PAGE, WB	92861
MMP12 protein (His tag)	ELISA, SDS-PAGE, WB	80209
MMP2 protein (Human)	ELISA, SDS-PAGE, WB	40964
MSH6 protein (Tagged)	ELISA, Inhib, SDS-PAGE, WB	83641
MUC1 protein (His tag)	ELISA, SDS-PAGE, WB	80082
MUM1 protein	ELISA, Inhib, WB	83638
Mumps virus wild-type, Gloucester strain, nucleocapsid protein	ELISA, SDS-PAGE, WB	74560
Mup1 protein (His tag)	ELISA, FuncS, WB	95193
Mutant p53 protein (Human)	ELISA, Inhib, SDS-PAGE, WB	73735
Myeloperoxidase protein (Human)	ELISA, Inhib, SDS-PAGE, WB	83643
MYL1 protein (Human)	ELISA, Inhib, WB	73846
Nanog protein (Human)	Dot, I-ELISA, SDS-PAGE, WB	95846
Neuroglobin protein	ELISA, SDS-PAGE, WB	63278
Oct4 protein (Human)	Dot, I-ELISA, SDS-PAGE, WB	95845
Osteocalcin protein	Dot, ELISA, RIA, SDS-PAGE	62262
Osteocrin protein (His tag)	ELISA, WB	73487
Osteopontin protein (MBP)	ELISA, MS, SDS-PAGE, WB	92964
Ovalbumin protein (HRP)	ELISA	53867
p15 Treponema pallidum protein	ELISA, WB	68120
p15 Treponema pallidum protein	ELISA, WB	78149
p15 Treponema pallidum protein (His tag)	ELISA, WB	68121
p15 Treponema pallidum protein (Tagged)	ELISA, WB	49008
p17 Treponema pallidum protein	ELISA, WB	68122
p17 Treponema pallidum protein (Tagged)	ELISA, WB	49009
p23 protein (Human)	ELISA, Inhib, SDS-PAGE, WB	75542
p34 protein	ELISA, SDS-PAGE, WB	73805
p34 protein (His tag)	ELISA, SDS-PAGE, WB	73806
Papillomavirus Regulatory Factor 1 / HDBP2 protein (Human)	ELISA, Inhib, WB	75569
PAPP A protein	ELISA, SDS-PAGE	99081
Parainfluenza Virus Type 1, strain C35, nucleocapsid protein	ELISA, SDS-PAGE, WB	74561
Parainfluenza Virus Type 3, strain C-243, nucleocapsid protein	ELISA, SDS-PAGE, WB	74563
PARP protein (Automodified)	ELISA, SDS-PAGE, WB	75605
PAX6 protein	I-ELISA, SDS-PAGE, WB	98302
Paxillin protein (Tagged)	ELISA, Inhib, SDS-PAGE, WB	76377
PCNA protein	ELISA, FuncS, WB	59914
PCNA protein (His tag)	ELISA, WB	73485
PDCD2 protein (Tagged)	ELISA, MS, SDS-PAGE, WB	92967

Proteins

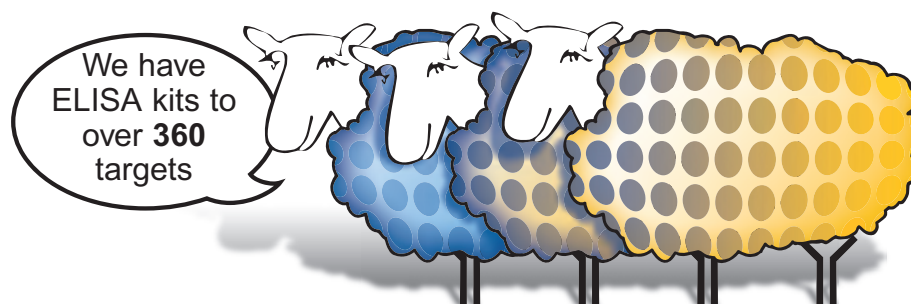
Product name	Applications	Catalog # www.abcam.com/...
PEF1 protein (Human)	ELISA, Inhib, SDS-PAGE, WB	75667
Periostin protein (His tag)	ELISA, WB	73235
Peripherin protein (Tagged)	ELISA, Inhib, SDS-PAGE, WB	83645
PEX7 protein (Human)	ELISA, Inhib, SDS-PAGE, WB	75666
PGLS protein	ELISA, SDS-PAGE	101059
pGP3D protein	ELISA, SDS-PAGE	67710
PGP9.5 protein (Human)	ELISA, Inhib, WB	75957
Phospholipase D2 protein (Tagged)	ELISA, Inhib, SDS-PAGE, WB	75668
Pichia pastoris LPS protein (Active)	ELISA, FuncS, SDS-PAGE, WB	73792
PKC iota protein (Tagged-His Tag)	ELISA, Inhib	42601
Placental alkaline phosphatase (PLAP) protein (Human)	ELISA, Inhib, SDS-PAGE, WB	83646
Plasmodium falciparum Circumsporozoite protein	ELISA, SDS-PAGE, WB	73857
Pleiotrophin protein (His tag)	ELISA, WB	73236
PLGF1 protein (His tag)	ELISA, SDS-PAGE	54336
Polyomavirus strain RA Major Capsid VP1 protein	ELISA, SDS-PAGE, WB	74571
PPAR gamma protein (Human)	ELISA, Inhib, WB	83647
PREI3 protein (Human)	ELISA, Inhib, SDS-PAGE, WB	75433
Prion protein PrP protein	ELISA, WB	753
Progesterone Receptor protein (Human)	ELISA, Inhib, WB	75958
Proteasome 20S C2 protein (Human)	ELISA, Inhib, SDS-PAGE, WB	75418
Protein A protein	ELISA, WB	7399
Protein A protein (Alkaline Phosphatase)	Dot, ELISA, IHC-Fr, IHC-P, WB	7345
Protein A protein (HRP)	Dot, ELISA, IHC-Fr, IHC-P, IM, WB	7456
Protein G protein	ELISA, SDS-PAGE	73758
Protein G protein (Alkaline Phosphatase)	Dot, ELISA, IHC-Fr, IHC-P, WB	7461
Protein G protein (HRP)	Dot, ELISA, IHC-Fr, IHC-P, IM, WB	7460
PSMA protein (Tagged)	BL, ELISA, SDS-PAGE, WB	83648
PTEN protein (Human)	ELISA, Inhib, SDS-PAGE, WB	83649
Rabies Virus, strain CVS-11, nucleocapsid protein	ELISA, SDS-PAGE, WB	74573
RBP4 protein (His tag)	ELISA, FuncS, SDS-PAGE, WB	63267
RBP4 protein (His tag)	ELISA, IP, WB	95010
REG1 alpha protein (His tag)	ELISA, SDS-PAGE, WB	63305
REG1 alpha protein (His tag)	ELISA, SDS-PAGE, WB	73778
REG1 beta protein (His tag)	ELISA, SDS-PAGE, WB	63308
REG1 beta protein (His tag)	ELISA, SDS-PAGE, WB	73779
Reg3a protein (His tag)	ELISA, WB	73486
REG4 protein (His tag)	ELISA, SDS-PAGE, WB	63304
REG4 protein (His tag)	ELISA, SDS-PAGE, WB	73781
Resistin protein (His tag)	ELISA, WB	52152
Respiratory Syncytial Virus Serotype A, strain A2, nucleocapsid protein	ELISA, SDS-PAGE, WB	74564
Rex1 protein	ELISA, SDS-PAGE, WB	98304
RGS19 protein	ELISA, Inhib, SDS-PAGE, WB	75333
RGS2 protein	ELISA, Inhib, SDS-PAGE, WB	75338
RGS4 protein	ELISA, Inhib, SDS-PAGE, WB	75341
RhD protein (His tag)	ELISA, SDS-PAGE, WB	80087
ROC1 protein	ELISA, Inhib, WB	75321
RPLP0 protein (Tagged)	ELISA, SDS-PAGE, WB	73787
Rubella Virus capsid protein	ELISA, WB	68543
Rubella Virus capsid protein	ELISA, SDS-PAGE, WB	74574
Rubella Virus capsid protein protein	ELISA, WB	43034
Rubella virus E1 protein	ELISA, WB	68498
Rubella virus E1 protein	ELISA, WB	107947
Rubella Virus E2 protein	ELISA, WB	43033
Rubella Virus gpE1 protein	ELISA, WB	43032
Rubella virus nucleocapsid protein	ELISA, SDS-PAGE	98904
Rubellavirus C protein	ELISA, WB	49040
S100 alpha protein (Active)	ELISA, Inhib, WB	68609

Proteins

Product name	Applications	Catalog # www.abcam.com/...
S100A4 protein (Human)	ELISA, Inhib, WB	83650
S100P protein	ELISA, SDS-PAGE, WB	63309
S100Z protein	ELISA, SDS-PAGE, WB	63310
SARS E protein	ELISA, WB	48949
SARS M protein	ELISA, WB	43028
SARS M protein	ELISA, WB	48951
SARS Nucleocapsid Protein protein	ELISA, WB	43030
SARS Nucleocapsid Protein protein	ELISA, WB	49042
SARS Nucleocapsid Protein protein (fragment)	ELISA, WB	43029
SARS spike glycoprotein protein	ELISA, WB	49043
SARS spike glycoprotein protein	ELISA, WB	49044
SARS spike glycoprotein protein	ELISA, WB	49046
Simian Virus 40 Major Capsid VP1 protein	ELISA, SDS-PAGE, WB	74565
SKP2 protein (Tagged)	ELISA, Inhib, SDS-PAGE, WB	83651
SNRP70 protein (His tag)	ELISA, SDS-PAGE, WB	70109
SNURPORTIN1 protein	ELISA, Inhib, SDS-PAGE, WB	75343
SOX2 protein (Human)	Dot, I-ELISA, SDS-PAGE, WB	95847
SOX5 protein (His tag)	ELISA, SDS-PAGE, WB	80098
SOX9 protein (Tagged)	ELISA, Inhib, SDS-PAGE, WB	83652
SOX9 protein (Tagged)	ELISA, Inhib, SDS-PAGE, WB	83653
SPARC protein (MBP)	ELISA, MS, SDS-PAGE, WB	92965
SPOP protein (Human)	ELISA, Inhib, SDS-PAGE, WB	75463
SSB protein (His tag)	ELISA, SDS-PAGE	84477
Stanniocalcin 1 protein (Tagged)	ELISA, SDS-PAGE, WB	63280
Stanniocalcin 2 protein (Tagged)	ELISA, WB	63281
START domain containing 7 protein	ELISA, Inhib, SDS-PAGE, WB	75464
STAT3 protein (Human)	ELISA, Inhib, WB	75465
Streptavidin protein (HRP)	Dot, ELISA, IHC-Fr, IHC-P, IM, WB	7403
Syndecan protein (Tagged)	ELISA, Inhib, WB	83609
SYT17 protein (Human)	ELISA, Inhib, WB	75515
TARDBP protein (Human)	ELISA, Inhib, WB	75468
TARS protein (His tag)	ELISA, WB	73441
TDO2 protein (Human)	ELISA, Inhib, SDS-PAGE, WB	75543
Testin protein	ELISA, Inhib, WB	75564
TGF beta 1 protein (Tagged)	ELISA, Inhib, WB	75964
TGF beta 3 protein	ELISA, Inhib, WB	75565
TGIF protein	ELISA, Inhib, WB	75965
THOC5 protein (Human)	ELISA, Inhib, WB	75536
Thrombospondin protein (Tagged)	ELISA, Inhib, SDS-PAGE, WB	83654
Thyroid Peroxidase protein (His tag)	ELISA, SDS-PAGE, WB	73765
Tick-Borne Encephalitis Virus E protein	ELISA, WB	68368
TIMP1 protein (MBP)	ELISA, MS, SDS-PAGE, WB	92963
TIMP2 protein (Human)	ELISA, WB	39314
TIMP2 protein (Mouse)	ELISA, WB	39315
TIMP2 protein (Rat)	ELISA, WB	39316
TIMP3 protein (Human)	ELISA, WB	39317
TIMP4 protein (Human)	ELISA, Inhib, WB	39319
Topoisomerase I protein (His tag)	ELISA, SDS-PAGE, WB	73574
Toxoplasma gondii GRA 1 protein	ELISA, WB	73746
Toxoplasma gondii GRA 7 protein	ELISA, WB	73748
Toxoplasma gondii MIC 3 protein	ELISA, SDS-PAGE, WB	73745
Toxoplasma gondii p30 protein	ELISA, WB	68110
Toxoplasma gondii protein	ELISA, WB	43135
Toxoplasma gondii protein	ELISA, WB	43137
Toxoplasma gondii protein	ELISA, Flow Cyt, WB	51321
TPA Tissue Plasminogen Activator protein (Active)	ELISA, FuncS, SDS-PAGE, WB	92728
Transglutaminase 2 protein (His tag)	ELISA, SDS-PAGE, WB	73764

Proteins

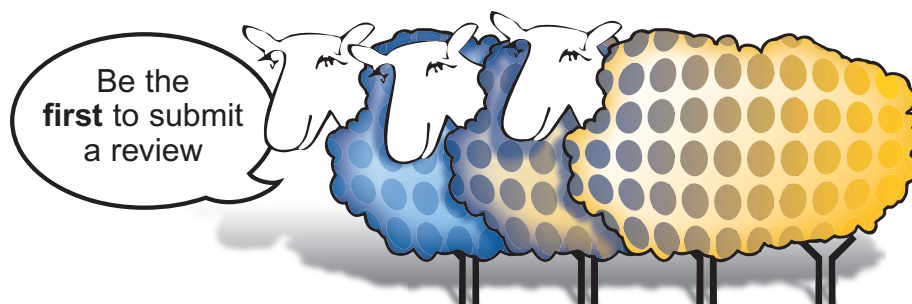
Product name	Applications	Catalog # www.abcam.com/...
Treponema Membrane Protein A protein	ELISA, Flow Cyt, SDS-PAGE, WB	54101
Treponema Membrane Protein A protein	Dot, ELISA, SDS-PAGE, WB	68126
Treponema pallidum mosaic protein protein	ELISA, WB	43056
Treponema pallidum p17 protein	ELISA, WB	43053
Treponema pallidum p41 protein	ELISA, WB	43054
Treponema pallidum p41 protein	ELISA, SDS-PAGE, WB	68123
Treponema pallidum p47 protein	ELISA, WB	43055
Treponema pallidum p47 protein	ELISA, Flow Cyt, SDS-PAGE, WB	51323
Treponema pallidum p47 protein	ELISA, SDS-PAGE, WB	68125
TRIP protein (Human)	ELISA, Inhib, WB	75648
TSTA3 protein (Human)	ELISA, Inhib, WB	75643
Ubiquitin protein (Biotin) (Human)	ELISA, WB	83347
UCN2 protein (His tag)	ELISA, SDS-PAGE, WB	79557
UCP3 protein (His tag)	ELISA, SDS-PAGE, WB	79512
Urocortin 3 protein (His tag)	ELISA, SDS-PAGE, WB	79555
Urocortin protein (His tag)	ELISA, SDS-PAGE, WB	79560
Urokinase protein (Active)	ELISA, FuncS, SDS-PAGE	92641
Uromucoid protein (Human)	ELISA, WB	91031
Uroplakin III protein	ELISA, Inhib, WB	70117
Von Willebrand Factor protein (Human)	ELISA, Inhib, WB	83632
VRK3 protein	ELISA, Inhib, SDS-PAGE, WB	75601
VZV gE protein	ELISA, WB	43050
VZV ORF26 protein	ELISA, WB	43052
VZV ORF26 protein	ELISA, WB	48958
VZV ORF9 protein	ELISA, WB	43051
VZV ORF9 protein	ELISA, WB	48959
WDR6 protein	ELISA, Inhib, SDS-PAGE, WB	75600
West Nile Virus (E protein) protein (His tag)	ELISA, WB	48960
West Nile Virus preM protein	ELISA, WB	49049
XPNPEP1 protein	ELISA, Inhib, SDS-PAGE, WB	75598
Zinc Alpha 2 Glycoprotein protein (Strep-tag)	ELISA, FuncS, WB	63282
ZNF256 protein	ELISA, Inhib, SDS-PAGE, WB	75570
ZNF581 protein (Human)	ELISA, Inhib, WB	75567



ABBREVIATIONS

Species key

Key	Species
Hu	Human
Mm	Mouse
Mcq	Macaque
Mk	Monkey
Rt	Rat



Required information for ordering

Ordering online

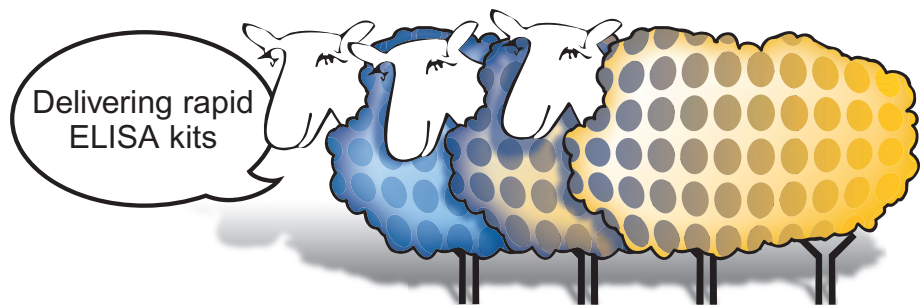
- Shipping address and billing address.
- Purchase order number* or credit card details.
- Your telephone number (so that we, or our delivery company, can phone you if there is a query).
- Your VAT number, if you are in the European Union. If you are in the UK and are VAT exempt, you will need to fax your exemption certificate.

* A purchase order number is a unique order reference number that your purchasing department will issue.

Ordering offline - Extra details

If you are not placing your order online then please also specify the following:

- Product code(s) of the item(s) you require (e.g. ab1).
- Your email address and/or fax number (so that we can confirm the details of the products you have ordered and our team can keep you continuously informed of the planned delivery date of your products).



Abcam's Terms and Conditions

In these Terms and Conditions 'Abcam' shall mean Abcam Limited, 330 Science Park, Cambridge CB4 0FL, United Kingdom. The Terms and Conditions set out below shall apply to Abcam branded products and services and to products distributed by Abcam on behalf of other suppliers.

Ordering details

All orders are subject to availability. Prices of products do not include freight and packing, VAT or import duties where these are applicable.

Price and other information provided is subject to change without notice, and prices may be changed up to the time of delivery. While every effort is made to keep information provided by Abcam up to date, Abcam will not be liable to you or anyone else if errors should occur in information provided on this website.

When your order is received Abcam will confirm receipt. However, formal acceptance of the order will only take place when the goods are despatched. If prices should be changed between the time of receipt of an order and despatch, Abcam will contact you in advance.

Invoices should be paid no later than 30 days after the invoice date, and customers must themselves pay any bank charges that are incurred in making the payment. Full payment instructions are set out on the invoice.

Receipt of products

Packaging and products should be inspected immediately upon receipt. Notification of damage, shortages or defects should be given immediately by e-mail, fax or phone.

Return & replacement policy

Quality is important to Abcam. If a product does not perform as described on the datasheet notify us within 90 days of delivery and our dedicated team of scientific experts will examine details of your protocol to determine whether the problem is protocol related or product related:

- For protocol-related problems, our experts will give you independent professional advice.
- For product-related problems, a replacement or refund will be offered.
- If you do not provide details of your protocol or follow the recommendations of our experts, Abcam will not issue a replacement or refund.

If items are ordered incorrectly by the customer Abcam will consider taking them back. This will normally be subject to a 20% restocking charge on the items plus any shipping, handling & packaging costs. Requests for returns must have prior authorization (contact returns@abcam.com) and must be made within 7 days of receipt of the items. Items must be returned in the same or equivalent packaging (i.e. cold and insulated) as originally despatched by Abcam.

Product use limitations

All Abcam products are "FOR RESEARCH USE ONLY AND ARE NOT INTENDED FOR DIAGNOSTIC, THERAPEUTIC OR ANY *IN VIVO* USE IN HUMAN SUBJECTS"

Abcam will not be liable for any claims or applications not listed in the literature or the misuse of products. Abcam cannot provide a guarantee for all applications for which a specific reagent may be used. Further, information disclosed in Abcam product literature should not be considered as a recommendation to use its products in violation of any patents.

Abcam shall not be liable for its failure to perform any of its obligations resulting from circumstances beyond its reasonable control. Abcam will notify its customers as soon as practically possible after it becomes aware of deficiencies in a product supplied. Any claim relating to products shall be limited to replacement or refund of original purchase price paid.

Except for personal injury or death (for which no limit applies), Abcam will not be liable (under contract, by negligence or any other way) for any indirect or consequential loss or damage arising out of or in connection with the products or this Agreement and Abcam's total aggregate liability for any loss or damage in respect of the products or this Agreement will not exceed the amount paid for the products.

General

Contracts and agreements with Abcam shall in all respects be governed by and interpreted in accordance with English law.

All information correct at time of printing.

Customer Service Tel: Europe +44-(0)1223-696000 | **Hong Kong** (852)-3793-3454
Japan +81-(0)-3-6805-8450 | **U.S.A.** 1-617-225-2272 (Toll free: 1-888-77-ABCAM)



Abcam in the USA

Abcam Inc
1 Kendall Square, Ste 341
Cambridge,
MA 02139-1517
USA

Tel: +1-617-225-2272

Toll free: +1-888-77-ABCAM

Fax: +1-866-739-9884

Abcam in Europe

Abcam plc
330 Cambridge Science Park
Milton Road
Cambridge
CB4 0FL
UK

Tel: +44-(0)1223-696000

Fax: +44-(0)1223-771600

Abcam in Japan

Abcam KK
1-16-8 Nihonbashi
Kakigaracho,
Chuo-ku
Tokyo 103-0014
Japan

Tel: +81-(0)3-6231-0940

Fax: +81-(0)3-6231-0941

Abcam in Hong Kong

Abcam (Hong Kong) Ltd
Unit 225A & 225B, 2/F
Core Building 2
1 Science Park West Avenue
Hong Kong Science Park
Hong Kong

Tel: (852)-2603-6823

Fax: (852)-3016-1888